

# Anti-PATT1 antibody ab106408

[3 References](#) [1 图像](#)

### 概述

<b>产品名称</b>	Anti-PATT1抗体
<b>描述</b>	兔多克隆抗体to PATT1
<b>宿主</b>	Rabbit
<b>特异性</b>	At least two isoforms of PATT1 are known to exist; ab106408 will detect both.
<b>经测试应用</b>	<b>适用于:</b> ICC/IF, IHC-P, WB
<b>种属反应性</b>	<b>与反应:</b> Mouse, Human
<b>免疫原</b>	Synthetic peptide corresponding to Human PATT1 (C terminal). Database link: <a href="#">NP_079047</a>
<b>阳性对照</b>	WB: Human thymus tissue lysate
<b>常规说明</b>	<p>The Life Science industry has been in the grips of a reproducibility crisis for a number of years. Abcam is leading the way in addressing this with our range of recombinant monoclonal antibodies and knockout edited cell lines for gold-standard validation. Please check that this product meets your needs before purchasing.</p> <p>If you have any questions, special requirements or concerns, please send us an inquiry and/or contact our Support team ahead of purchase. Recommended alternatives for this product can be found below, along with publications, customer reviews and Q&amp;As</p>

### 性能

<b>形式</b>	Liquid
<b>存放说明</b>	Shipped at 4°C. Store at 4°C (stable for up to 12 months).
<b>存储溶液</b>	pH: 7.2 Preservative: 0.02% Sodium azide Constituent: PBS
<b>纯度</b>	Immunogen affinity purified
<b>克隆</b>	多克隆
<b>同种型</b>	IgG

### 应用

## The Abpromise guarantee

**Abpromise™** 承诺保证使用 ab106408 于以下的经测试应用

“应用说明”部分下显示的仅为推荐的起始稀释度；实际最佳的稀释度/浓度应由使用者检定。

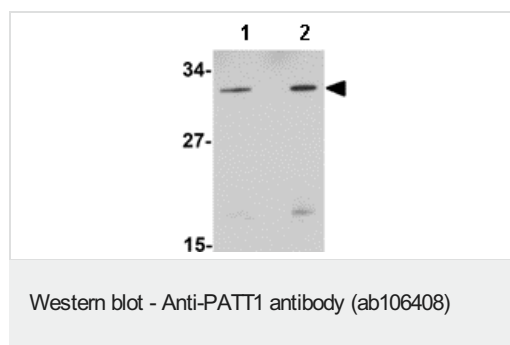
应用	Ab评论	说明
ICC/IF		Use at an assay dependent concentration.
IHC-P		Use at an assay dependent concentration.
WB		Use a concentration of 1 - 2 µg/ml. Predicted molecular weight: 27 kDa.

## 靶标

### 序列相似性

Belongs to the acetyltransferase family. GNAT subfamily.  
Contains 1 N-acetyltransferase domain.

## 图片



**Lane 1** : Anti-PATT1 antibody (ab106408) at 1 µg/ml

**Lane 2** : Anti-PATT1 antibody (ab106408) at 2 µg/ml

**All lanes** : Human thymus tissue lysate

Lysates/proteins at 15 µg per lane.

**Predicted band size:** 27 kDa

**Please note:** All products are "FOR RESEARCH USE ONLY. NOT FOR USE IN DIAGNOSTIC PROCEDURES"

## Our Abpromise to you: Quality guaranteed and expert technical support

- Replacement or refund for products not performing as stated on the datasheet
- Valid for 12 months from date of delivery
- Response to your inquiry within 24 hours
- We provide support in Chinese, English, French, German, Japanese and Spanish
- Extensive multi-media technical resources to help you
- We investigate all quality concerns to ensure our products perform to the highest standards

If the product does not perform as described on this datasheet, we will offer a refund or replacement. For full details of the Abpromise, please visit <https://www.abcam.cn/abpromise> or contact our technical team.

## Terms and conditions

---

- Guarantee only valid for products bought direct from Abcam or one of our authorized distributors