

Anti-Patched / PTCH1 antibody ab53715

★★★★★ [7 Abreviews](#) [78 References](#) [2 图像](#)

概述

| | |
|-------|---|
| 产品名称 | Anti-Patched / PTCH1抗体 |
| 描述 | 兔多克隆抗体to Patched / PTCH1 |
| 宿主 | Rabbit |
| 特异性 | ab53715 detects endogenous levels of total Patched/PTCH1 protein. In WB, in addition to the expected band at 150 kDa an extra band at 75 kDa is often detected. Both bands can be blocked with the immunogen peptide. In IHC, cytoplasmic and membrane staining is frequently observed. These results are similar to what we see with other antibodies against this target. |
| 经测试应用 | 适用于: WB, IHC-P |
| 种属反应性 | 与反应: Mouse, Human |
| 免疫原 | Synthetic peptide corresponding to Human Patched/ PTCH1 (N terminal). Immunogen is in the range of aa 1-50. Database link: Q13635 |
| 常规说明 | <p>The Life Science industry has been in the grips of a reproducibility crisis for a number of years. Abcam is leading the way in addressing this with our range of recombinant monoclonal antibodies and knockout edited cell lines for gold-standard validation. Please check that this product meets your needs before purchasing.</p> <p>If you have any questions, special requirements or concerns, please send us an inquiry and/or contact our Support team ahead of purchase. Recommended alternatives for this product can be found below, along with publications, customer reviews and Q&As</p> |

性能

| | |
|------|--|
| 形式 | Liquid |
| 存放说明 | Shipped at 4°C. Store at -20°C. Stable for 12 months at -20°C. |
| 存储溶液 | pH: 7.40 Preservative: 0.02% Sodium azide Constituents: 50% Glycerol, 0.87% Sodium chloride, PBS |
| 纯度 | Immunogen affinity purified |
| 克隆 | 多克隆 |
| 同种型 | IgG |

应用

The Abpromise guarantee **Abpromise™**承诺保证使用ab53715于以下的经测试应用

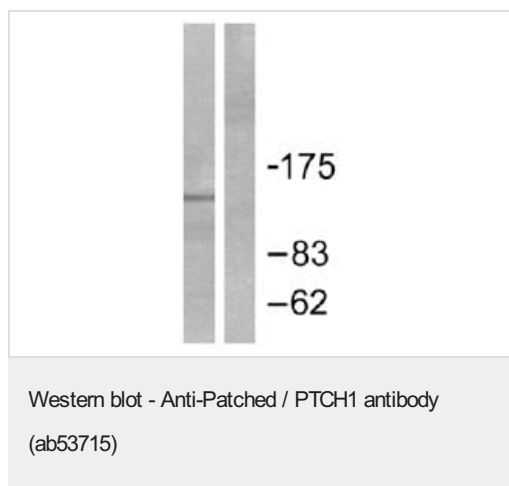
“应用说明”部分 下显示的仅为推荐的起始稀释度;实际最佳的稀释度/浓度应由使用者检定。

| 应用 | Ab评论 | 说明 |
|-------|-----------|--|
| WB | ★★★★★ (5) | 1/500 - 1/1000. Predicted molecular weight: 161 kDa. |
| IHC-P | ★★★★★ (1) | Use at an assay dependent concentration. |

靶标

| | |
|-------|---|
| 功能 | Acts as a receptor for sonic hedgehog (SHH), indian hedgehog (IHH) and desert hedgehog (DHH). Associates with the smoothened protein (SMO) to transduce the hedgehog's proteins signal. Seems to have a tumor suppressor function, as inactivation of this protein is probably a necessary, if not sufficient step for tumorigenesis. |
| 组织特异性 | In the adult, expressed in brain, lung, liver, heart, placenta, skeletal muscle, pancreas and kidney. Expressed in tumor cells but not in normal skin. |
| 疾病相关 | <p>Defects in PTCH1 are probably the cause of basal cell nevus syndrome (BCNS) [MIM:109400]; also known as Gorlin syndrome or Gorlin-Goltz syndrome. BCNS is an autosomal dominant disease characterized by nevoid basal cell carcinomas (NBCCS) and developmental abnormalities such as rib and craniofacial alterations, polydactyly, syndactyly, and spina bifida. In addition, the patients suffer from a multitude of tumors like basal cell carcinomas (BCC), fibromas of the ovaries and heart, cysts of the skin, jaws and mesentery, as well as medulloblastomas and meningiomas. PTCH1 is also mutated in squamous cell carcinoma (SCC). Could also be associated with large body size observed in BCNS patients.</p> <p>Defects in PTCH1 are a cause of sporadic basal cell carcinoma (BCC) [MIM:605462].</p> <p>Defects in PTCH1 are the cause of holoprosencephaly type 7 (HPE7) [MIM:610828].</p> <p>Holoprosencephaly (HPE) [MIM:236100] is the most common structural anomaly of the brain, in which the developing forebrain fails to correctly separate into right and left hemispheres. Holoprosencephaly is genetically heterogeneous and associated with several distinct facies and phenotypic variability.</p> |
| 序列相似性 | <p>Belongs to the patched family.</p> <p>Contains 1 SSD (sterol-sensing) domain.</p> |
| 发展阶段 | In the embryo, found in all major target tissues of sonic hedgehog, such as the ventral neural tube, somites, and tissues surrounding the zone of polarizing activity of the limb bud. |
| 翻译后修饰 | Glycosylation is necessary for SHH binding. |
| 细胞定位 | Membrane. |

图片

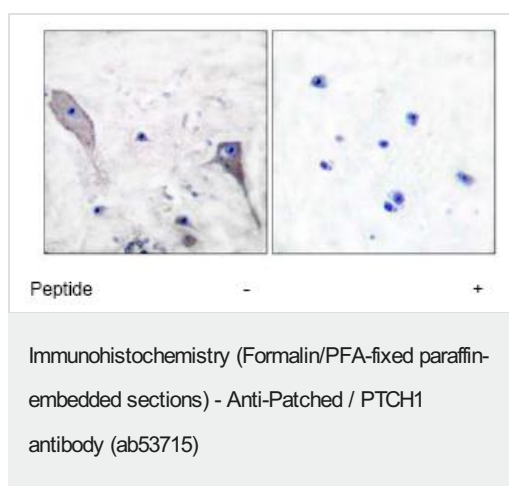


All lanes : Anti-Patched / PTCH1 antibody (ab53715) at 1/500 dilution

Lane 1 : Extracts from mouse muscle cells, minus immunising peptide

Lane 2 : Extracts from mouse muscle cells, plus immunising peptide

Predicted band size: 161 kDa



ab53715, at a 1/50 dilution, staining Patched / PTCH in paraffin embedded human brain tissue by Immunohistochemistry in the absence (left image) or presence (right image) of the immunising peptide.

Please note: All products are "FOR RESEARCH USE ONLY. NOT FOR USE IN DIAGNOSTIC PROCEDURES"

Our Abpromise to you: Quality guaranteed and expert technical support

- Replacement or refund for products not performing as stated on the datasheet
- Valid for 12 months from date of delivery
- Response to your inquiry within 24 hours
- We provide support in Chinese, English, French, German, Japanese and Spanish
- Extensive multi-media technical resources to help you
- We investigate all quality concerns to ensure our products perform to the highest standards

If the product does not perform as described on this datasheet, we will offer a refund or replacement. For full details of the Abpromise, please visit <https://www.abcam.cn/abpromise> or contact our technical team.

Terms and conditions

- Guarantee only valid for products bought direct from Abcam or one of our authorized distributors