

### Anti-Patched / PTCH1 antibody ab51983

★ ★ ★ ★ ★ [1 Abreviews](#) [4 References](#) [2 图像](#)

#### 概述

<b>产品名称</b>	Anti-Patched / PTCH1 抗体
<b>描述</b>	山羊多克隆抗体 to Patched / PTCH1
<b>宿主</b>	Goat
<b>经测试应用</b>	<b>适用于:</b> ICC, WB
<b>种属反应性</b>	<b>与反应:</b> Mouse, Human <b>预测可用于:</b> Cow, Dog, Pig 
<b>免疫原</b>	Synthetic peptide corresponding to Human Patched/ PTCH1 aa 1271-1285 (internal sequence). Sequence: C-HPESRRHPPSNPRQQ  Database link: <a href="#">Q13635</a> (Peptide available as <a href="#">ab200894</a> )

 [Run BLAST with](#)

 [Run BLAST with](#)

#### 常规说明

The Life Science industry has been in the grips of a reproducibility crisis for a number of years. Abcam is leading the way in addressing this with our range of recombinant monoclonal antibodies and knockout edited cell lines for gold-standard validation. Please check that this product meets your needs before purchasing.

If you have any questions, special requirements or concerns, please send us an inquiry and/or contact our Support team ahead of purchase. Recommended alternatives for this product can be found below, along with publications, customer reviews and Q&As

#### 性能

<b>形式</b>	Liquid
<b>存放说明</b>	Shipped at 4°C. Upon delivery aliquot and store at -20°C or -80°C. Avoid repeated freeze / thaw cycles.
<b>存储溶液</b>	pH: 7.30 Preservative: 0.02% Sodium azide Constituents: 0.5% BSA, Tris buffered saline
<b>纯度</b>	Immunogen affinity purified
<b>纯化说明</b>	Purified from goat serum by ammonium sulphate precipitation followed by antigen affinity

chromatography using the immunizing peptide.

克隆 多克隆  
同种型 IgG

## 应用

**The Abpromise guarantee** **Abpromise™**承诺保证使用ab51983于以下的经测试应用

“应用说明”部分 下显示的仅为推荐的起始稀释度;实际最佳的稀释度/浓度应由使用者检定。

应用	Ab评论	说明
ICC		Use at an assay dependent concentration.
WB	★★★★★ (1)	Use a concentration of 1 - 3 µg/ml. Detects a band of approximately 150 kDa (predicted molecular weight: 161 kDa). 1 hour primary incubation is recommended for this product.

## 靶标

**功能** Acts as a receptor for sonic hedgehog (SHH), indian hedgehog (IHH) and desert hedgehog (DHH). Associates with the smoothed protein (SMO) to transduce the hedgehog's proteins signal. Seems to have a tumor suppressor function, as inactivation of this protein is probably a necessary, if not sufficient step for tumorigenesis.

**组织特异性** In the adult, expressed in brain, lung, liver, heart, placenta, skeletal muscle, pancreas and kidney. Expressed in tumor cells but not in normal skin.

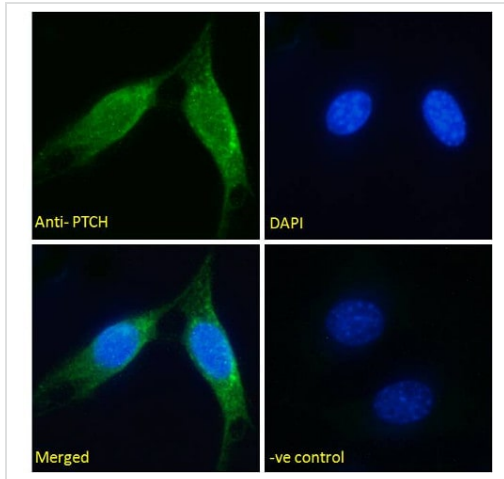
**疾病相关** Defects in PTCH1 are probably the cause of basal cell nevus syndrome (BCNS) [MIM:109400]; also known as Gorlin syndrome or Gorlin-Goltz syndrome. BCNS is an autosomal dominant disease characterized by nevoid basal cell carcinomas (NBCCS) and developmental abnormalities such as rib and craniofacial alterations, polydactyly, syndactyly, and spina bifida. In addition, the patients suffer from a multitude of tumors like basal cell carcinomas (BCC), fibromas of the ovaries and heart, cysts of the skin, jaws and mesentery, as well as medulloblastomas and meningiomas. PTCH1 is also mutated in squamous cell carcinoma (SCC). Could also be associated with large body size observed in BCNS patients.  
Defects in PTCH1 are a cause of sporadic basal cell carcinoma (BCC) [MIM:605462].  
Defects in PTCH1 are the cause of holoprosencephaly type 7 (HPE7) [MIM:610828].  
Holoprosencephaly (HPE) [MIM:236100] is the most common structural anomaly of the brain, in which the developing forebrain fails to correctly separate into right and left hemispheres. Holoprosencephaly is genetically heterogeneous and associated with several distinct facies and phenotypic variability.

**序列相似性** Belongs to the patched family.  
Contains 1 SSD (sterol-sensing) domain.

**发展阶段** In the embryo, found in all major target tissues of sonic hedgehog, such as the ventral neural tube, somites, and tissues surrounding the zone of polarizing activity of the limb bud.

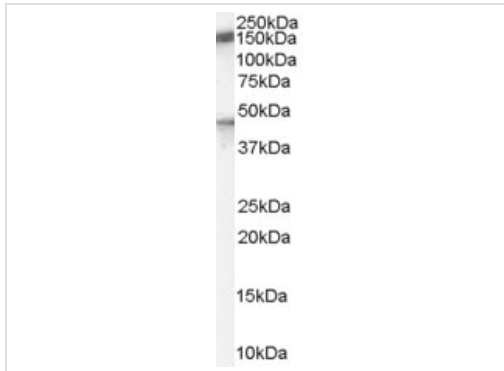
**翻译后修饰** Glycosylation is necessary for SHH binding.

**细胞定位** Membrane.



Immunofluorescence analysis of paraformaldehyde fixed NIH3T3 cells permeabilized with 0.15% Triton staining Patched / PTCH1. Primary incubation with ab51983 (5µg/ml) for 1 hour followed by Alexa Fluor 488 secondary antibody (2µg/ml). Nuclear counter stain is DAPI.

Immunocytochemistry - Anti-Patched / PTCH1 antibody (ab51983)



Anti-Patched / PTCH1 antibody (ab51983) at 1 µg/ml + Human Brain lysate in RIPA buffer at 35 µg

**Predicted band size:** 161 kDa

**Observed band size:** 150 kDa

Primary incubation was 1 hour. Detected by chemiluminescence.

Western blot - Anti-Patched / PTCH1 antibody (ab51983)

**Please note:** All products are "FOR RESEARCH USE ONLY. NOT FOR USE IN DIAGNOSTIC PROCEDURES"

**Our Abpromise to you: Quality guaranteed and expert technical support**

- Replacement or refund for products not performing as stated on the datasheet
- Valid for 12 months from date of delivery
- Response to your inquiry within 24 hours
  
- We provide support in Chinese, English, French, German, Japanese and Spanish
- Extensive multi-media technical resources to help you
- We investigate all quality concerns to ensure our products perform to the highest standards

If the product does not perform as described on this datasheet, we will offer a refund or replacement. For full details of the Abpromise, please visit <https://www.abcam.cn/abpromise> or contact our technical team.

## Terms and conditions

---

- Guarantee only valid for products bought direct from Abcam or one of our authorized distributors