


# Anti-Parvalbumin antibody ab32895

★★★★★ [6 Abreviews](#) [9 References](#) [2 图像](#)

### 概述

产品名称	Anti-Parvalbumin抗体
描述	山羊多克隆抗体to Parvalbumin
宿主	Goat
经测试应用	适用于: WB, Flow Cyt
种属反应性	与反应: Rat, Human 预测可用于: Mouse, Xenopus laevis, Macaque monkey 
免疫原	Synthetic peptide corresponding to Human Parvalbumin aa 99-110 (C terminal). Sequence: GVDEFSTLVAES  Database link: <a href="#">P20472</a> <a href="#">Run BLAST with</a> <a href="#">Run BLAST with</a>
阳性对照	WB: Human cerebellum and rat brain tissue lysate. Flow Cyt: Kelly cells
常规说明	<p>The Life Science industry has been in the grips of a reproducibility crisis for a number of years. Abcam is leading the way in addressing this with our range of recombinant monoclonal antibodies and knockout edited cell lines for gold-standard validation. Please check that this product meets your needs before purchasing.</p> <p>If you have any questions, special requirements or concerns, please send us an inquiry and/or contact our Support team ahead of purchase. Recommended alternatives for this product can be found below, along with publications, customer reviews and Q&amp;As</p>

### 性能

形式	Liquid
存放说明	Shipped at 4°C. Upon delivery aliquot and store at -20°C. Avoid freeze / thaw cycles.
存储溶液	pH: 7.30 Preservative: 0.02% Sodium azide Constituents: Tris buffered saline, 0.5% BSA
纯度	Immunogen affinity purified
纯化说明	Purified from goat serum by ammonium sulphate precipitation followed by antigen affinity chromatography using the immunizing peptide.

克隆 多克隆  
同种型 IgG

## 应用

**The Abpromise guarantee** **Abpromise™**承诺保证使用ab32895于以下的经测试应用

“应用说明”部分 下显示的仅为推荐的起始稀释度;实际最佳的稀释度/浓度应由使用者检定。

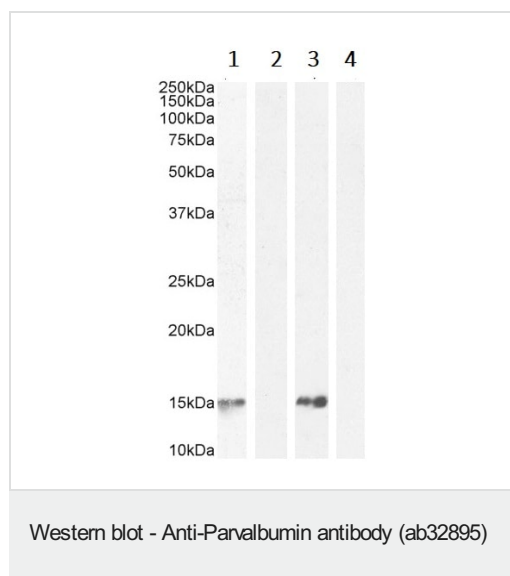
应用	Ab评论	说明
WB	★★★★★ (1)	Use a concentration of 0.01 - 0.3 µg/ml. Detects a band of approximately 12 kDa (predicted molecular weight: 12 kDa). Block using milk. Primary incubation 1 hour at room temperature. Recommended concentration: 0.1-0.3µg/ml.
Flow Cyt		Use a concentration of 10 µg/ml.

## 靶标

**功能** In muscle, parvalbumin is thought to be involved in relaxation after contraction. It binds two calcium ions.

**序列相似性** Belongs to the parvalbumin family.  
Contains 2 EF-hand domains.

## 图片



**Lanes 1-2 :** Anti-Parvalbumin antibody (ab32895) at 0.01 µg/ml

**Lanes 3-4 :** Anti-Parvalbumin antibody (ab32895) at 0.3 µg/ml

**Lane 1 :** Human cerebellum tissue lysate

**Lane 2 :** Human cerebellum tissue lysate + peptide

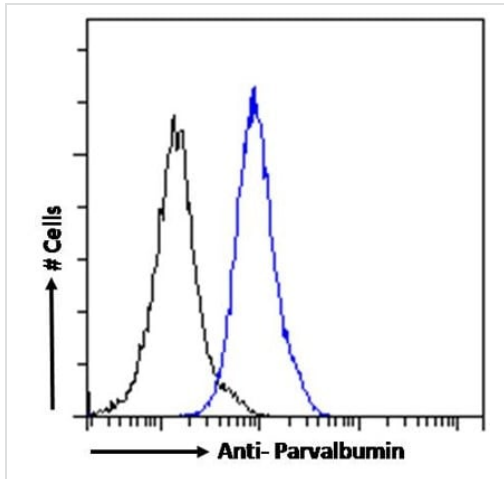
**Lane 3 :** Rat brain tissue lysate

**Lane 4 :** Rat brain tissue lysate + peptide

Lysates/proteins at 35 µg per lane.

**Predicted band size:** 12 kDa

Lysate in RIPA buffer. Detected by chemiluminescence.



Flow Cytometry - Anti-Parvalbumin antibody  
(ab32895)

Flow cytometric analysis of paraformaldehyde fixed Kelly cells (blue line), permeabilized with 0.5% Triton. Primary incubation 1 hr (10 µg/mL) followed by Alexa Fluor 488 secondary antibody (1 µg/mL). IgG control: Unimmunized goat IgG (black line) followed by Alexa Fluor 488 secondary antibody.

**Please note:** All products are "FOR RESEARCH USE ONLY. NOT FOR USE IN DIAGNOSTIC PROCEDURES"

### Our Abpromise to you: Quality guaranteed and expert technical support

- Replacement or refund for products not performing as stated on the datasheet
- Valid for 12 months from date of delivery
- Response to your inquiry within 24 hours
- We provide support in Chinese, English, French, German, Japanese and Spanish
- Extensive multi-media technical resources to help you
- We investigate all quality concerns to ensure our products perform to the highest standards

If the product does not perform as described on this datasheet, we will offer a refund or replacement. For full details of the Abpromise, please visit <https://www.abcam.cn/abpromise> or contact our technical team.

### Terms and conditions

- Guarantee only valid for products bought direct from Abcam or one of our authorized distributors