

# Anti-PAR6 antibody ab6022

**2 References**   **1 图像**

### 概述

产品名称	Anti-PAR6抗体
描述	山羊多克隆抗体to PAR6
宿主	Goat
经测试应用	适用于: IHC-P
种属反应性	与反应: Human
免疫原	Synthetic peptide corresponding to Human PAR6 aa 300 to the C-terminus (C terminal). (NP_001032358.1) Database link: <a href="#">NP_058644.1</a>

 [Run BLAST with](#)

 [Run BLAST with](#)

### 常规说明

The Life Science industry has been in the grips of a reproducibility crisis for a number of years. Abcam is leading the way in addressing this with our range of recombinant monoclonal antibodies and knockout edited cell lines for gold-standard validation. Please check that this product meets your needs before purchasing.

If you have any questions, special requirements or concerns, please send us an inquiry and/or contact our Support team ahead of purchase. Recommended alternatives for this product can be found below, along with publications, customer reviews and Q&As

### 性能

形式	Liquid
存放说明	Shipped at 4°C. Upon delivery aliquot and store at -20°C or -80°C. Avoid repeated freeze / thaw cycles.
存储溶液	pH: 7.30 Preservative: 0.02% Sodium azide Constituents: Tris buffered saline, 0.5% BSA
纯度	Immunogen affinity purified
纯化说明	Purified from goat serum by ammonium sulphate precipitation followed by antigen affinity chromatography using the immunizing peptide.
克隆	多克隆
同种型	IgG

## 应用

**The Abpromise guarantee**      **Abpromise™** 承诺保证使用 ab6022 于以下的经测试应用

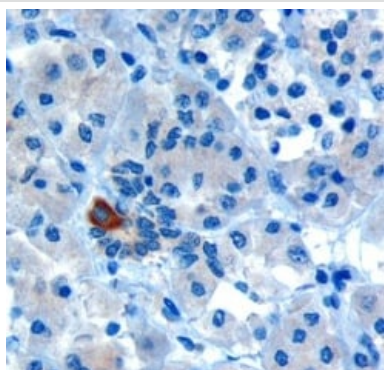
“应用说明”部分 下显示的仅为推荐的起始稀释度; 实际最佳的稀释度/浓度应由使用者检定。

应用	Ab 评论	说明
IHC-P		Use a concentration of 5 - 10 µg/ml.

## 靶标

功能	Adapter protein involved in asymmetrical cell division and cell polarization processes. Probably involved in the formation of epithelial tight junctions. Association with PARD3 may prevent the interaction of PARD3 with F11R/JAM1, thereby preventing tight junction assembly. The PARD6-PARD3 complex links GTP-bound Rho small GTPases to atypical protein kinase C proteins.
组织特异性	Expressed in pancreas, skeletal muscle, brain and heart. Weakly expressed in kidney and placenta.
序列相似性	Belongs to the PAR6 family. Contains 1 OPR domain. Contains 1 PDZ (DHR) domain. Contains 1 pseudo-CRIB domain.
结构域	The pseudo-CRIB domain together with the PDZ domain is required for the interaction with Rho small GTPases. The OPR domain mediates interactions with MAP2K5. The PDZ domain mediates the interaction with CRB3.
细胞定位	Cytoplasm. Cell membrane. Cell projection > ruffle. Cell junction > tight junction. Colocalizes with GTP-bound CDC42 or RAC1 at membrane ruffles and with PARD3 and PRKCI at epithelial tight junctions.

## 图片



Immunohistochemistry (Formalin/PFA-fixed paraffin-embedded sections) - Anti-PAR6 antibody (ab6022)

Ab6022 (10ug/ml) staining human PAR6 in human pancreas by immunohistochemistry using paraffin embedded tissue. Microwaved antigen retrieval with Tris/EDTA buffer pH9, HRP-staining. Ab6022 shows strong cytoplasmic staining in rare cells of intralobular ducts.

### **Our Abpromise to you: Quality guaranteed and expert technical support**

---

- Replacement or refund for products not performing as stated on the datasheet
- Valid for 12 months from date of delivery
- Response to your inquiry within 24 hours
- We provide support in Chinese, English, French, German, Japanese and Spanish
- Extensive multi-media technical resources to help you
- We investigate all quality concerns to ensure our products perform to the highest standards

If the product does not perform as described on this datasheet, we will offer a refund or replacement. For full details of the Abpromise, please visit <https://www.abcam.cn/abpromise> or contact our technical team.

### **Terms and conditions**

---

- Guarantee only valid for products bought direct from Abcam or one of our authorized distributors