

### Anti-PAR6 antibody ab49776

**8 References**   **2 图像**

#### 概述

产品名称	Anti-PAR6抗体
描述	兔多克隆抗体to PAR6
宿主	Rabbit
经测试应用	适用于: ICC/IF, WB
种属反应性	与反应: Human
免疫原	Synthetic peptide corresponding to Human PAR6 aa 300 to the C-terminus conjugated to keyhole limpet haemocyanin. (Peptide available as <a href="#">ab49775</a> )
阳性对照	This antibody gave a positive signal using a PAR6A partial Human Recombinant Tagged Protein
常规说明	<p>The Life Science industry has been in the grips of a reproducibility crisis for a number of years. Abcam is leading the way in addressing this with our range of recombinant monoclonal antibodies and knockout edited cell lines for gold-standard validation. Please check that this product meets your needs before purchasing.</p> <p>If you have any questions, special requirements or concerns, please send us an inquiry and/or contact our Support team ahead of purchase. Recommended alternatives for this product can be found below, along with publications, customer reviews and Q&amp;As</p>

#### 性能

形式	Liquid
存放说明	Shipped at 4°C. Store at +4°C short term (1-2 weeks). Upon delivery aliquot. Store at -20°C or -80°C. Avoid freeze / thaw cycle.
存储溶液	<p>pH: 7.40</p> <p>Preservative: 0.02% Sodium azide</p> <p>Constituent: PBS</p> <p>Batches of this product that have a concentration &lt; 1mg/ml may have BSA added as a stabilising agent. If you would like information about the formulation of a specific lot, please contact our scientific support team who will be happy to help.</p>
纯度	Immunogen affinity purified

克隆

多克隆

同种型

IgG

应用

The Abpromise guarantee      **Abpromise™**承诺保证使用ab49776于以下的经测试应用

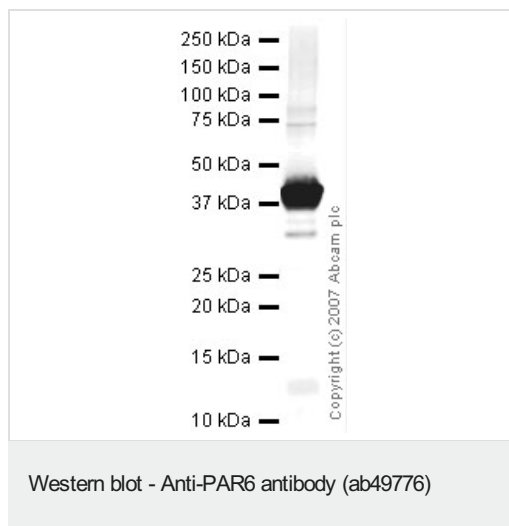
“应用说明”部分 下显示的仅为推荐的起始稀释度;实际最佳的稀释度/浓度应由使用者检定。

应用	Ab评论	说明
ICC/IF		Use a concentration of 5 µg/ml.
WB		Use a concentration of 1 µg/ml. Detects a band of approximately 37 kDa (predicted molecular weight: 37 kDa).

靶标

功能	Adapter protein involved in asymmetrical cell division and cell polarization processes. Probably involved in the formation of epithelial tight junctions. Association with PARD3 may prevent the interaction of PARD3 with F11R/JAM1, thereby preventing tight junction assembly. The PARD6-PARD3 complex links GTP-bound Rho small GTPases to atypical protein kinase C proteins.
组织特异性	Expressed in pancreas, skeletal muscle, brain and heart. Weakly expressed in kidney and placenta.
序列相似性	Belongs to the PAR6 family. Contains 1 OPR domain. Contains 1 PDZ (DHR) domain. Contains 1 pseudo-CRIB domain.
结构域	The pseudo-CRIB domain together with the PDZ domain is required for the interaction with Rho small GTPases. The OPR domain mediates interactions with MAP2K5. The PDZ domain mediates the interaction with CRB3.
细胞定位	Cytoplasm. Cell membrane. Cell projection > ruffle. Cell junction > tight junction. Colocalizes with GTP-bound CDC42 or RAC1 at membrane ruffles and with PARD3 and PRKCI at epithelial tight junctions.

图片



Anti-PAR6 antibody (ab49776) at 1 µg/ml + PARD6A partial  
Human Recombinant Tagged Protein at 0.2 µg

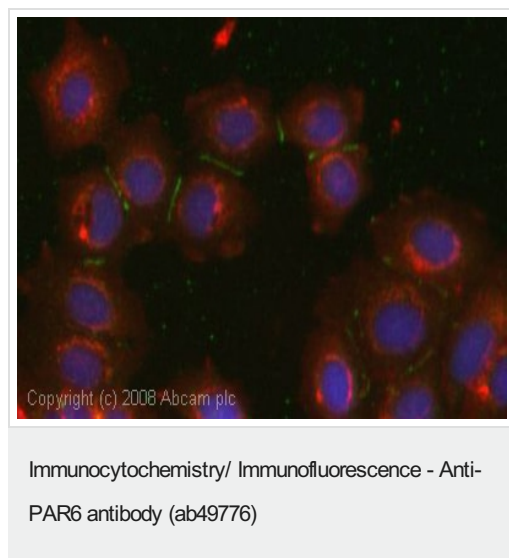
### Secondary

IRDye 680 Conjugated Goat Anti-Rabbit IgG (H+L) at 1/10000  
dilution

Performed under reducing conditions.

**Predicted band size:** 37 kDa

**Observed band size:** 37 kDa



ICC/IF image of ab49776 stained human MCF7 cells. The cells were methanol fixed (5 min), permeabilised in 0.1% PBS-Tween (20 min) and incubated with the antibody (ab49776, 5µg/ml) for 1h at room temperature. 1%BSA / 10% normal goat serum / 0.3M glycine was used to block non-specific protein-protein interactions. The secondary antibody (green) was Alexa Fluor® 488 goat anti-rabbit IgG (H+L) used at a 1/1000 dilution for 1h. Alexa Fluor® 594 WGA was used to label plasma membranes (red). DAPI was used to stain the cell nuclei (blue). This antibody also gave a positive IF result in HeLa and HEK 293 cells.

**Please note:** All products are "FOR RESEARCH USE ONLY. NOT FOR USE IN DIAGNOSTIC PROCEDURES"

### Our Abpromise to you: Quality guaranteed and expert technical support

- Replacement or refund for products not performing as stated on the datasheet
- Valid for 12 months from date of delivery
- Response to your inquiry within 24 hours
- We provide support in Chinese, English, French, German, Japanese and Spanish
- Extensive multi-media technical resources to help you

- We investigate all quality concerns to ensure our products perform to the highest standards

If the product does not perform as described on this datasheet, we will offer a refund or replacement. For full details of the Abpromise, please visit <https://www.abcam.cn/abpromise> or contact our technical team.

#### **Terms and conditions**

---

- Guarantee only valid for products bought direct from Abcam or one of our authorized distributors