

Anti-PAR2 antibody ab124227

★★★★★ 1 Abreviews 3 References 2 图像

概述

产品名称	Anti-PAR2抗体
描述	兔多克隆抗体to PAR2
宿主	Rabbit
经测试应用	适用于: IHC-P
种属反应性	与反应: Rat
免疫原	Synthetic peptide within Human PAR2 aa 300-370 conjugated to keyhole limpet haemocyanin. The exact sequence is proprietary. The immunogen is directed against a cytoplasmic region of PAR2.
常规说明	<p>The Life Science industry has been in the grips of a reproducibility crisis for a number of years. Abcam is leading the way in addressing this with our range of recombinant monoclonal antibodies and knockout edited cell lines for gold-standard validation. Please check that this product meets your needs before purchasing.</p> <p>If you have any questions, special requirements or concerns, please send us an inquiry and/or contact our Support team ahead of purchase. Recommended alternatives for this product can be found below, along with publications, customer reviews and Q&As</p>

性能

形式	Liquid
存放说明	Shipped at 4°C. Upon delivery aliquot and store at -20°C. Avoid freeze / thaw cycles.
存储溶液	Contains antibody stabilization buffer.
纯度	Immunogen affinity purified
纯化说明	ab123227 is purified on an antigen-based affinity column.
克隆	多克隆
同种型	IgG

应用

The Abpromise guarantee **Abpromise™**承诺保证使用ab124227于以下的经测试应用

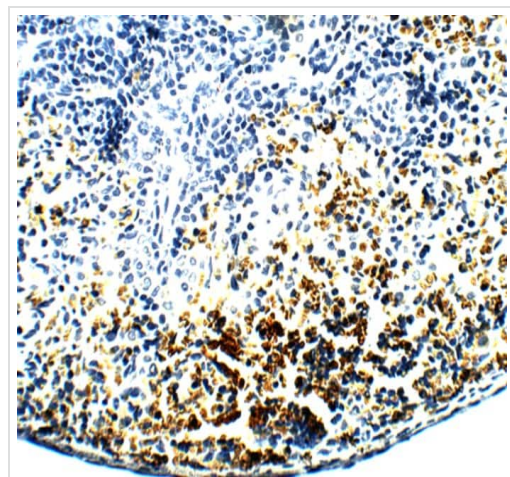
“应用说明”部分 下显示的仅为推荐的起始稀释度;实际最佳的稀释度/浓度应由使用者检定。

应用	Ab评论	说明
IHC-P	★★★★★ (1)	1/100.

靶标

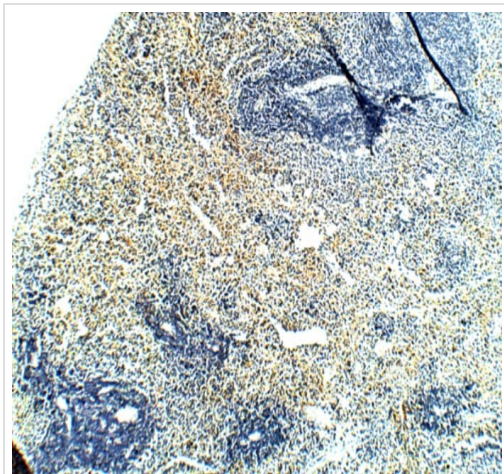
功能	Receptor for trypsin and trypsin-like enzymes coupled to G proteins that stimulate phosphoinositide hydrolysis. May have a role in the regulation of vascular tone.
组织特异性	Widely expressed in tissues with especially high levels in pancreas, liver, kidney, small intestine, and colon. Moderate expression is detected in many organs, but none in brain or skeletal muscle.
序列相似性	Belongs to the G-protein coupled receptor 1 family.
翻译后修饰	A proteolytic cleavage generates a new N-terminus that functions as a tethered ligand.
细胞定位	Cell membrane.

图片



Immunohistochemistry (Formalin/PFA-fixed paraffin-embedded sections) analysis of rat spleen tissue labelling PAR2 with ab124227 at 1/100 dilution. Counterstained with hematoxylin. 40X magnification.

Immunohistochemistry (Formalin/PFA-fixed paraffin-embedded sections) - Anti-PAR2 antibody (ab124227)



Immunohistochemistry (Formalin/PFA-fixed paraffin-embedded sections) analysis of rat spleen tissue labelling PAR2 with ab124227 at 1/100 dilution. Counterstained with hematoxylin. 5X magnification.

Immunohistochemistry (Formalin/PFA-fixed paraffin-embedded sections) - Anti-PAR2 antibody (ab124227)

Please note: All products are "FOR RESEARCH USE ONLY. NOT FOR USE IN DIAGNOSTIC PROCEDURES"

Our Abpromise to you: Quality guaranteed and expert technical support

- Replacement or refund for products not performing as stated on the datasheet
- Valid for 12 months from date of delivery
- Response to your inquiry within 24 hours
- We provide support in Chinese, English, French, German, Japanese and Spanish
- Extensive multi-media technical resources to help you
- We investigate all quality concerns to ensure our products perform to the highest standards

If the product does not perform as described on this datasheet, we will offer a refund or replacement. For full details of the Abpromise, please visit <https://www.abcam.cn/abpromise> or contact our technical team.

Terms and conditions

- Guarantee only valid for products bought direct from Abcam or one of our authorized distributors