


Anti-PAPP A2 antibody ab117743

★☆☆☆☆ **1 Abreviews** **2 图像**

概述

产品名称	Anti-PAPP A2抗体
描述	兔多克隆抗体to PAPP A2
宿主	Rabbit
经测试应用	适用于: IHC-P
种属反应性	与反应: Human 预测可用于: Mouse, Rat 
免疫原	Synthetic peptide conjugated to KLH, corresponding to a region from the N-terminus of Human PAPP A2.
阳性对照	Human Heart and Placenta tissues.
常规说明	<p>The Life Science industry has been in the grips of a reproducibility crisis for a number of years. Abcam is leading the way in addressing this with our range of recombinant monoclonal antibodies and knockout edited cell lines for gold-standard validation. Please check that this product meets your needs before purchasing.</p> <p>If you have any questions, special requirements or concerns, please send us an inquiry and/or contact our Support team ahead of purchase. Recommended alternatives for this product can be found below, along with publications, customer reviews and Q&As</p>

性能

形式	Liquid
存放说明	Shipped at 4°C. Store at +4°C short term (1-2 weeks). Store at -20°C or -80°C. Avoid freeze / thaw cycle.
存储溶液	<p>pH: 7.4</p> <p>Preservative: 0.02% Sodium azide</p> <p>Constituent: 99% PBS</p>
纯度	Protein A purified
克隆	多克隆
同种型	IgG

应用

The Abpromise guarantee

Abpromise™ 承诺保证使用 ab117743 于以下的经测试应用

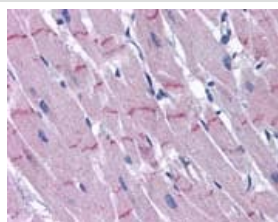
“应用说明”部分 下显示的仅为推荐的起始稀释度; 实际最佳的稀释度/浓度应由使用者检定。

应用	Ab 评论	说明
IHC-P		Use a concentration of 5 µg/ml.

靶标

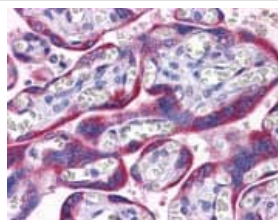
功能	Metalloproteinase which specifically cleaves IGFBP-5. Shows limited proteolysis toward IGFBP-3.
组织特异性	Expressed abundantly in placenta, and non-pregnant mammary gland with low expression in the kidney, fetal brain and pancreas.
序列相似性	Belongs to the peptidase M43B family. Contains 5 Sushi (CCP/SCR) domains.
细胞定位	Secreted.

图片



ab117743, at 5 µg/ml, staining PAPP A2 in Formalin-fixed, Paraffin-embedded Human heart tissue by Immunohistochemistry.

Immunohistochemistry (Formalin/PFA-fixed paraffin-embedded sections) - Anti-PAPP A2 antibody (ab117743)



ab117743, at 5 µg/ml, staining PAPP A2 in Formalin-fixed, Paraffin-embedded Human Placenta tissue by Immunohistochemistry.

Immunohistochemistry (Formalin/PFA-fixed paraffin-embedded sections) - Anti-PAPP A2 antibody (ab117743)

Please note: All products are "FOR RESEARCH USE ONLY. NOT FOR USE IN DIAGNOSTIC PROCEDURES"

Our Abpromise to you: Quality guaranteed and expert technical support

- Replacement or refund for products not performing as stated on the datasheet
- Valid for 12 months from date of delivery
- Response to your inquiry within 24 hours

- We provide support in Chinese, English, French, German, Japanese and Spanish
- Extensive multi-media technical resources to help you
- We investigate all quality concerns to ensure our products perform to the highest standards

If the product does not perform as described on this datasheet, we will offer a refund or replacement. For full details of the Abpromise, please visit <https://www.abcam.cn/abpromise> or contact our technical team.

Terms and conditions

- Guarantee only valid for products bought direct from Abcam or one of our authorized distributors