

Anti-PAPP A antibody [9] ab52030

[3 References](#) [2 图像](#)

概述

产品名称	Anti-PAPP A抗体[9]
描述	小鼠单克隆抗体[9] to PAPP A
宿主	Mouse
特异性	This antibody is specific for native human PAPP A. Heat and SDS denatured PAPP A is also recognized, but not acid treated PAPP A.
经测试应用	适用于: IHC-P, IHC-Fr
种属反应性	与反应: Human
免疫原	Full length native protein (purified) (Human)
表位	The epitope is located on the PAPP A subunit of the heterotetramer.
常规说明	Clone number also known as 004-09. The Life Science industry has been in the grips of a reproducibility crisis for a number of years. Abcam is leading the way in addressing this with our range of recombinant monoclonal antibodies and knockout edited cell lines for gold-standard validation. Please check that this product meets your needs before purchasing. If you have any questions, special requirements or concerns, please send us an inquiry and/or contact our Support team ahead of purchase. Recommended alternatives for this product can be found below, along with publications, customer reviews and Q&As

性能

形式	Liquid
存放说明	Shipped at 4°C. Store at +4°C short term (1-2 weeks). Store at -20°C or -80°C. Avoid freeze / thaw cycle.
存储溶液	pH: 7.40 Preservative: 0.097% Sodium azide Constituents: 2.9% Sodium chloride, 0.0268% PBS
纯化说明	Protein A/G purified
克隆	单克隆
克隆编号	9
同种型	IgG2b

轻链类型

kappa

应用

The Abpromise guarantee **Abpromise™**承诺保证使用ab52030于以下的经测试应用

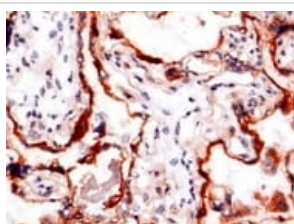
“应用说明”部分 下显示的仅为推荐的起始稀释度;实际最佳的稀释度/浓度应由使用者检定。

应用	Ab评论	说明
IHC-P		Use at an assay dependent concentration.
IHC-Fr		Use at an assay dependent concentration.

靶标

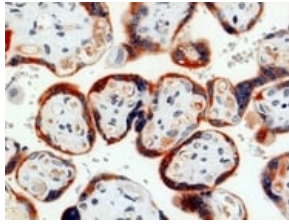
功能	Metalloproteinase which specifically cleaves IGFBP-4 and IGFBP-5, resulting in release of bound IGF. Cleavage of IGFBP-4 is dramatically enhanced by the presence of IGF, whereas cleavage of IGFBP-5 is slightly inhibited by the presence of IGF.
组织特异性	High levels in placenta and pregnancy serum. In placenta, expressed in X cells in septa and anchoring villi, and in syncytiotrophoblasts in the chorionic villi. Lower levels are found in a variety of other tissues including kidney, myometrium, endometrium, ovaries, breast, prostate, bone marrow, colon, fibroblasts and osteoblasts.
序列相似性	Belongs to the peptidase M43B family. Contains 5 Sushi (CCP/SCR) domains.
发展阶段	Present in serum and placenta during pregnancy; levels increase throughout pregnancy.
翻译后修饰	There appear to be no free sulfhydryl groups.
细胞定位	Secreted.

图片



Immunohistochemistry (Frozen sections) - Anti-PAPP A antibody [9] (ab52030)

Ab52030 staining human PAPP A in human placenta tissue by immunohistochemistry using frozen tissue. Staining (red-brown) is restricted to the syncytiotrophoblast of the chorionic villi.



Ab52030 staining human PAPP A in human placenta tissue by immunohistochemistry using paraffin embedded tissue. Staining (red-brown) is restricted to the syncytiotrophoblast of the chorionic villi.

Immunohistochemistry (Formalin/PFA-fixed paraffin-embedded sections) - Anti-PAPP A antibody [9] (ab52030)

Please note: All products are "FOR RESEARCH USE ONLY. NOT FOR USE IN DIAGNOSTIC PROCEDURES"

Our Abpromise to you: Quality guaranteed and expert technical support

- Replacement or refund for products not performing as stated on the datasheet
- Valid for 12 months from date of delivery
- Response to your inquiry within 24 hours
- We provide support in Chinese, English, French, German, Japanese and Spanish
- Extensive multi-media technical resources to help you
- We investigate all quality concerns to ensure our products perform to the highest standards

If the product does not perform as described on this datasheet, we will offer a refund or replacement. For full details of the Abpromise, please visit <https://www.abcam.cn/abpromise> or contact our technical team.

Terms and conditions

- Guarantee only valid for products bought direct from Abcam or one of our authorized distributors