


Anti-PAPOLA antibody ab72492

[1 References](#) [1 图像](#)

概述

| | |
|-------|-----------------------------------------------------------------------------------------------------------------------------------------------------------------------------------------------------------------------------------------------------------------------------------------------------------------------------------------------------------------------------------------------------------------------------------------------------------------------------------------------------------------------------------------------------------------------------------------------------------------|
| 产品名称 | Anti-PAPOLA抗体 |
| 描述 | 兔多克隆抗体to PAPOLA |
| 宿主 | Rabbit |
| 经测试应用 | 适用于: WB 不适用于: IP |
| 种属反应性 | 与反应: Human 预测可用于: Mouse, Cow, Xenopus laevis  |
| 免疫原 | Synthetic peptide within Human PAPOLA aa 650 to the C-terminus (C terminal). The exact immunogen sequence used to generate this antibody is proprietary information. If additional detail on the immunogen is needed to determine the suitability of the antibody for your needs, please contact our Scientific Support team to discuss your requirements. Database link: P51003 |
| 阳性对照 | WB: HeLa whole cell lysate. |
| 常规说明 | <p>The Life Science industry has been in the grips of a reproducibility crisis for a number of years. Abcam is leading the way in addressing this with our range of recombinant monoclonal antibodies and knockout edited cell lines for gold-standard validation. Please check that this product meets your needs before purchasing.</p> <p>If you have any questions, special requirements or concerns, please send us an inquiry and/or contact our Support team ahead of purchase. Recommended alternatives for this product can be found below, along with publications, customer reviews and Q&As</p> |

性能

| | |
|------|-------------------------------------------------------------------------------------------------|
| 形式 | Liquid |
| 存放说明 | Shipped at 4°C. Upon delivery aliquot and store at -20°C. Avoid freeze / thaw cycles. |
| 存储溶液 | pH: 6.8 Preservative: 0.09% Sodium azide Constituents: 0.1% BSA, Tris buffered saline |
| 纯度 | Immunogen affinity purified |
| 纯化说明 | ab72492 was affinity purified using an epitope specific to PAPOLA immobilized on solid support. |
| 克隆 | 多克隆 |

同种型

IgG

应用

The Abpromise guarantee

Abpromise™ 承诺保证使用 ab72492 于以下的经测试应用

“应用说明”部分下显示的仅为推荐的起始稀释度；实际最佳的稀释度/浓度应由使用者检定。

| 应用 | Ab评论 | 说明 |
|----|------|------------------------------------------------------------------------------------------------|
| WB | | 1/2000 - 1/10000. Detects a band of approximately 83 kDa (predicted molecular weight: 83 kDa). |

应用说明

Is unsuitable for IP.

靶标

功能

Polymerase that creates the 3'-poly(A) tail of mRNA's. Also required for the endoribonucleolytic cleavage reaction at some polyadenylation sites. May acquire specificity through interaction with a cleavage and polyadenylation specificity factor (CPSF) at its C-terminus.

序列相似性

Belongs to the poly(A) polymerase family.

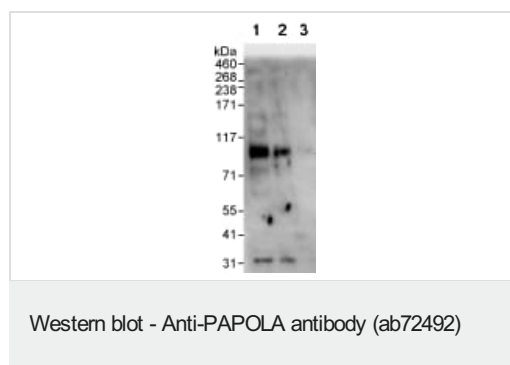
翻译后修饰

Polysumoylated. Varying sumoylation depending on tissue- and cell-type. Highly sumoylated in bladder and NIH 3T3 cells. Sumoylation is required for nuclear localization and enhances PAP stability. Desumoylated by SENP1. Inhibits polymerase activity.
Hyperphosphorylation on multiple CDK2 consensus and non-consensus sites in the C-terminal Ser/Thr-rich region represses PAP activity in late M-phase. Phosphorylation/dephosphorylation may regulate the interaction between PAP and CPSF.
Acetylated in the C-terminus. Acetylation decreases interaction with NUDT21 and KPNB1, and inhibits nuclear localization through inhibiting binding to the importin alpha/beta complex.

细胞定位

Cytoplasm. Nucleus. The 90 kDa form is nuclear while the 100 kDa and the 106 kDa forms are both nuclear and cytoplasmic.

图片



All lanes : Anti-PAPOLA antibody (ab72492) at 0.04 µg/ml

Lane 1 : HeLa whole cell lysate at 50 µg

Lane 2 : HeLa whole cell lysate at 15 µg

Lane 3 : HeLa whole cell lysate at 5 µg

Predicted band size: 83 kDa

Observed band size: 83 kDa

Exposure time: 3 minutes

Please note: All products are "FOR RESEARCH USE ONLY. NOT FOR USE IN DIAGNOSTIC PROCEDURES"

Our Abpromise to you: Quality guaranteed and expert technical support

- Replacement or refund for products not performing as stated on the datasheet
- Valid for 12 months from date of delivery
- Response to your inquiry within 24 hours

- We provide support in Chinese, English, French, German, Japanese and Spanish
- Extensive multi-media technical resources to help you
- We investigate all quality concerns to ensure our products perform to the highest standards

If the product does not perform as described on this datasheet, we will offer a refund or replacement. For full details of the Abpromise, please visit <https://www.abcam.cn/abpromise> or contact our technical team.

Terms and conditions

- Guarantee only valid for products bought direct from Abcam or one of our authorized distributors