

Anti-Papillary renal cell carcinoma antibody ab114998

2 图像

概述

产品名称	Anti-Papillary renal cell carcinoma抗体
描述	兔多克隆抗体to Papillary renal cell carcinoma
宿主	Rabbit
经测试应用	适用于: IP, IHC-P
种属反应性	与反应: Human 预测可用于: Chimpanzee, Rhesus monkey, Gorilla, Orangutan 
免疫原	Synthetic peptide, corresponding to a region within amino acids 125-175 of Human Papillary renal cell carcinoma (NP_005964.3).
阳性对照	Hela whole cell lysate
常规说明	<p>The Life Science industry has been in the grips of a reproducibility crisis for a number of years. Abcam is leading the way in addressing this with our range of recombinant monoclonal antibodies and knockout edited cell lines for gold-standard validation. Please check that this product meets your needs before purchasing.</p> <p>If you have any questions, special requirements or concerns, please send us an inquiry and/or contact our Support team ahead of purchase. Recommended alternatives for this product can be found below, along with publications, customer reviews and Q&As</p>

性能

形式	Liquid
存放说明	Shipped at 4°C. Upon delivery aliquot and store at -20°C. Avoid freeze / thaw cycles.
存储溶液	pH: 7 Preservative: 0.09% Sodium azide Constituent: 99% Tris citrate/phosphate
纯度	pH 7 to 8 Immunogen affinity purified
纯化说明	ab114998 was affinity purified using an epitope specific to Papillary renal cell carcinoma immobilized on solid support.
克隆	多克隆

同种型

IgG

应用

The Abpromise guarantee

Abpromise™承诺保证使用ab114998于以下的经测试应用

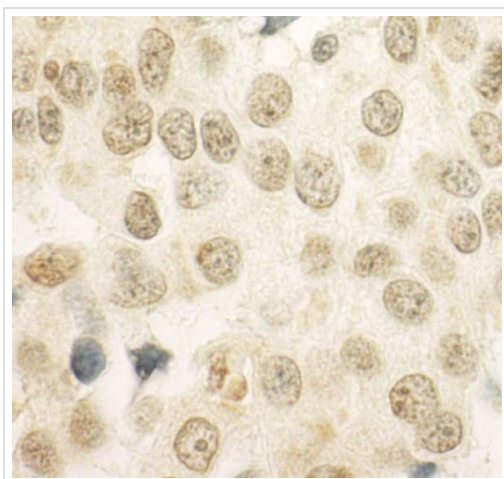
“应用说明”部分 下显示的仅为推荐的起始稀释度;实际最佳的稀释度/浓度应由使用者检定。

应用	Ab评论	说明
IP		Use at 2-5 µg/mg of lysate.
IHC-P		1/500 - 1/2000. Perform heat mediated antigen retrieval with citrate buffer pH 6 before commencing with IHC staining protocol.

靶标

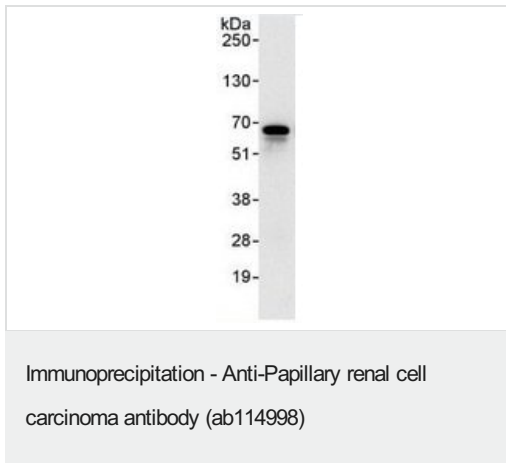
功能	May regulate cell cycle progression through interaction with MAD2L2.
组织特异性	Ubiquitous in fetal and adult tissues.
疾病相关	Note=A chromosomal aberration involving PRCC is found in patients with papillary renal cell carcinoma. Translocation t(X;1)(p11.2;q21.2) with TFE3.
细胞定位	Nucleus.

图片



Immunohistochemistry (Formalin/PFA-fixed paraffin-embedded sections) analysis of human breast carcinoma tissue labelling Papillary renal cell carcinoma with ab114998 at 1/1000 (1 µg/ml).
Detection: DAB.

Immunohistochemistry (Formalin/PFA-fixed paraffin-embedded sections) - Anti-Papillary renal cell carcinoma antibody (ab114998)



Immunoprecipitation : 1 mg of Hela whole cell lysate immunoprecipitated using ab114998 at 3 µg/mg lysate; 20% of immunoprecipitate loaded per lane

Western Blot: Anti-Papillary renal cell carcinoma antibody at 1 µg/ml

developed using the ECL technique

Exposure time : 10 seconds

Predicted band size : 52 kDa

Please note: All products are "FOR RESEARCH USE ONLY. NOT FOR USE IN DIAGNOSTIC PROCEDURES"

Our Abpromise to you: Quality guaranteed and expert technical support

- Replacement or refund for products not performing as stated on the datasheet
- Valid for 12 months from date of delivery
- Response to your inquiry within 24 hours
- We provide support in Chinese, English, French, German, Japanese and Spanish
- Extensive multi-media technical resources to help you
- We investigate all quality concerns to ensure our products perform to the highest standards

If the product does not perform as described on this datasheet, we will offer a refund or replacement. For full details of the Abpromise, please visit <https://www.abcam.cn/abpromise> or contact our technical team.

Terms and conditions

- Guarantee only valid for products bought direct from Abcam or one of our authorized distributors