

Anti-PAP antibody [LT3D1] ab61707

1 图像

概述

产品名称	Anti-PAP抗体[LT3D1]
描述	小鼠单克隆抗体[LT3D1] to PAP
宿主	Mouse
经测试应用	适用于: Flow Cyt
种属反应性	与反应: Human
免疫原	Other Immunogen Type corresponding to PAP. Genetic immunisation with cDNA encoding human PAP (PAcP, ACPP). Selection based on recognition of the complete native protein expressed on transfected mammalian cells.
常规说明	<p>The Life Science industry has been in the grips of a reproducibility crisis for a number of years. Abcam is leading the way in addressing this with our range of recombinant monoclonal antibodies and knockout edited cell lines for gold-standard validation. Please check that this product meets your needs before purchasing.</p> <p>If you have any questions, special requirements or concerns, please send us an inquiry and/or contact our Support team ahead of purchase. Recommended alternatives for this product can be found below, along with publications, customer reviews and Q&As</p>

性能

形式	Liquid
存放说明	Shipped at 4°C. Store at +4°C short term (1-2 weeks). Upon delivery aliquot. Store at -20°C or -80°C. Avoid freeze / thaw cycle.
存储溶液	pH: 7.20 Constituent: PBS
纯度	Protein G purified
克隆	单克隆
克隆编号	LT3D1
同种型	IgG1

应用

The Abpromise guarantee

Abpromise™承诺保证使用ab61707于以下的经测试应用

“应用说明”部分下显示的仅为推荐的起始稀释度;实际最佳的稀释度/浓度应由使用者检定。

应用	Ab评论	说明
Flow Cyt		

应用说明

cELISA: 1/200 - 1/400.

Flow Cyt: Use 1.2µg for 10⁶ cells.

Not yet tested in other applications.

Optimal dilutions/concentrations should be determined by the end user.

靶标

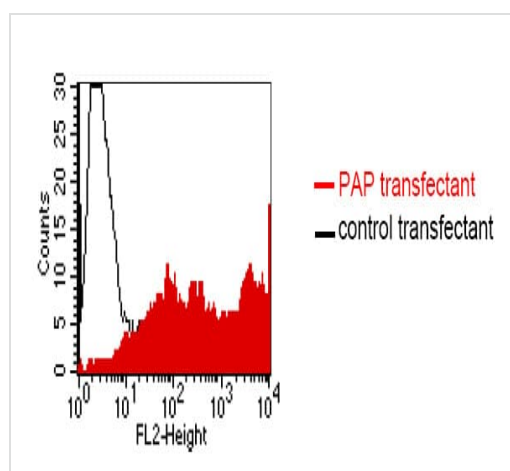
序列相似性

Belongs to the histidine acid phosphatase family.

细胞定位

Secreted and Lysosome membrane. Predominantly localized in the plasma membrane but also detected in intracellular vesicles.

图片



Flow Cytometry - Anti-PAP antibody [LT3D1]

(ab61707)

Ab 61707 staining of BOSC23 cells transiently transfected with an expression vector encoding either PAP (red curve) or an irrelevant protein (control transfectant: black curve). Binding of ab61707 was detected with a PE-conjugated secondary antibody. A positive signal was obtained only with PAP transfected cells

Please note: All products are "FOR RESEARCH USE ONLY. NOT FOR USE IN DIAGNOSTIC PROCEDURES"

Our Abpromise to you: Quality guaranteed and expert technical support

- Replacement or refund for products not performing as stated on the datasheet
- Valid for 12 months from date of delivery
- Response to your inquiry within 24 hours

- We provide support in Chinese, English, French, German, Japanese and Spanish
- Extensive multi-media technical resources to help you
- We investigate all quality concerns to ensure our products perform to the highest standards

If the product does not perform as described on this datasheet, we will offer a refund or replacement. For full details of the Abpromise, please visit <https://www.abcam.cn/abpromise> or contact our technical team.

Terms and conditions

- Guarantee only valid for products bought direct from Abcam or one of our authorized distributors