

Anti-Pancreatic Polypeptide antibody ab77192

★★★★☆ [3 Abreviews](#) [20 References](#) [2 图像](#)

概述

产品名称	Anti-Pancreatic Polypeptide抗体
描述	山羊多克隆抗体 to Pancreatic Polypeptide
宿主	Goat
经测试应用	适用于: IHC-P, ELISA, ICC/IF, WB, Flow Cyt (Intra)
种属反应性	与反应: Mouse, Human 预测可用于: Rat, Dog, Chimpanzee, Macaque monkey 
免疫原	Synthetic peptide corresponding to Human Pancreatic Polypeptide aa 61-73 (internal sequence). Sequence: TRPRYGKRHKEDT Database link: P01298 Run BLAST with Run BLAST with
阳性对照	IHC-P: Human pancreas tissue. Flow Cyt (intra): U2OS cells.
常规说明	The Life Science industry has been in the grips of a reproducibility crisis for a number of years. Abcam is leading the way in addressing this with our range of recombinant monoclonal antibodies and knockout edited cell lines for gold-standard validation. Please check that this product meets your needs before purchasing. If you have any questions, special requirements or concerns, please send us an inquiry and/or contact our Support team ahead of purchase. Recommended alternatives for this product can be found below, along with publications, customer reviews and Q&As

性能

形式	Liquid
存放说明	Shipped at 4°C. Upon delivery aliquot and store at -20°C or -80°C. Avoid repeated freeze / thaw cycles.
存储溶液	pH: 7.30 Preservative: 0.02% Sodium azide Constituents: 0.5% BSA, Tris buffered saline
纯度	Immunogen affinity purified
纯化说明	Purified from goat serum by ammonium sulphate precipitation followed by antigen affinity

chromatography using the immunizing peptide.

克隆

多克隆

同种型

IgG

应用

The Abpromise guarantee

Abpromise™承诺保证使用ab77192于以下的经测试应用

“应用说明”部分 下显示的仅为推荐的起始稀释度;实际最佳的稀释度/浓度应由使用者检定。

应用	Ab评论	说明
IHC-P	★★★★☆ (2)	Use a concentration of 3 - 5 µg/ml. Perform heat mediated antigen retrieval via the microwave method before commencing with IHC staining protocol. In paraffin embedded human pancreas, shows strong cytoplasmic staining of rare cells located at the periphery of islets of Langerhans.
ELISA		Use at an assay dependent concentration. Antibody detection limit dilution 1:32,000 by peptide ELISA.
ICC/IF	★★★★☆ (1)	Use at an assay dependent concentration. See Abreview.
WB		Use at an assay dependent concentration. Predicted molecular weight: 10 kDa. Preliminary experiments gave an approx 35-38 kDa band in human pancreas lysate, which was successfully blocked by incubation with the immunizing peptide. Please note that currently we cannot find an explanation in the literature for the band we observe given the calculated size of 10.5 kDa.
Flow Cyt (Intra)		Use a concentration of 10 µg/ml.

靶标

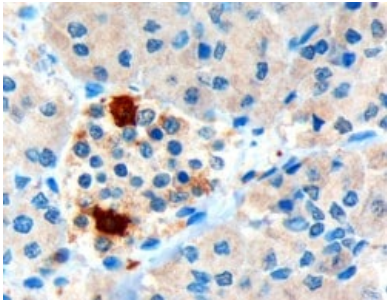
相关性

Pancreatic hormone is synthesized in pancreatic islets of Langerhans and acts as a regulator of pancreatic and gastrointestinal functions and may be important in the regulation of food intake. Plasma levels of this hormone have been shown to be reduced in conditions associated with increased food intake and elevated in anorexia nervosa. In addition, infusion of this hormone in obese rodents has shown to decrease weight gain.

细胞定位

Secreted

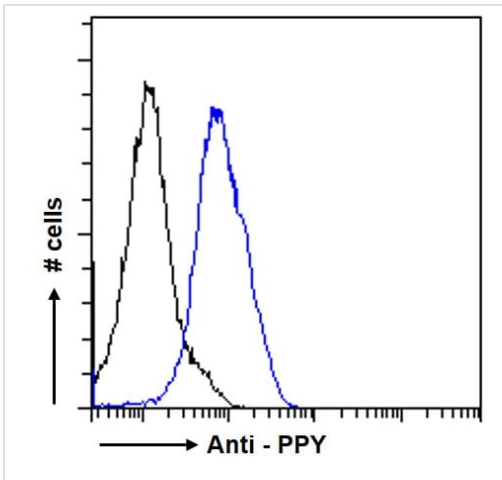
图片



Immunohistochemistry (Formalin/PFA-fixed paraffin-embedded sections) - Anti-Pancreatic Polypeptide antibody (ab77192)

Staining of formalin-fixed, paraffin-embedded human pancreas tissue with 3µg/ml ab77192. Note strong cytoplasmic staining of rare cells located at the periphery of islets of Langerhans.

Microwaved antigen retrieval with Tris/EDTA buffer pH6, HRP-staining.



Flow Cytometry (Intracellular) - Anti-Pancreatic Polypeptide antibody (ab77192)

Flow cytometric analysis of paraformaldehyde fixed U2OS cells (blue line), permeabilized with 0.5% Triton. Primary incubation 1hr (10ug/ml) followed by Alexa Fluor 488 secondary antibody (1ug/ml). IgG control: Unimmunized goat IgG (black line) followed by Alexa Fluor 488 secondary antibody.

Please note: All products are "FOR RESEARCH USE ONLY. NOT FOR USE IN DIAGNOSTIC PROCEDURES"

Our Abpromise to you: Quality guaranteed and expert technical support

- Replacement or refund for products not performing as stated on the datasheet
- Valid for 12 months from date of delivery
- Response to your inquiry within 24 hours
- We provide support in Chinese, English, French, German, Japanese and Spanish
- Extensive multi-media technical resources to help you
- We investigate all quality concerns to ensure our products perform to the highest standards

If the product does not perform as described on this datasheet, we will offer a refund or replacement. For full details of the Abpromise, please visit <https://www.abcam.cn/abpromise> or contact our technical team.

Terms and conditions

- Guarantee only valid for products bought direct from Abcam or one of our authorized distributors