

Anti-Pancreatic Lipase/PTL antibody [EPR6276] ab124915

重组 RabMAb

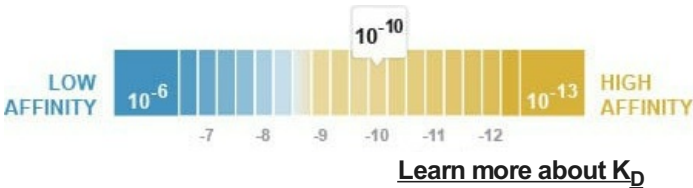
2 References 4 图像

概述

产品名称	Anti-Pancreatic Lipase/PTL抗体[EPR6276]
描述	兔单克隆抗体[EPR6276] to Pancreatic Lipase/PTL
宿主	Rabbit
经测试应用	适用于: WB, IHC-P 不适用于: IP
种属反应性	与反应: Human 不与反应: Mouse, Rat
免疫原	Synthetic peptide within Human Pancreatic Lipase/PTL aa 350-450. The exact sequence is proprietary.
阳性对照	Human pancreas and Human small intestine lysates; Human pancreas tissue.
常规说明	<p>This product is a recombinant monoclonal antibody, which offers several advantages including:</p> <ul style="list-style-type: none"><li>- High batch-to-batch consistency and reproducibility</li><li>- Improved sensitivity and specificity</li><li>- Long-term security of supply</li><li>- Animal-free production</li></ul> <p>For more information <a href="#">see here</a>.</p> <p>Our RabMAb<sup>®</sup> technology is a patented hybridoma-based technology for making rabbit monoclonal antibodies. For details on our patents, please refer to <a href="#">RabMAb<sup>®</sup> patents</a>.</p>

性能

形式	Liquid
存放说明	Shipped at 4°C. Store at -20°C. Stable for 12 months at -20°C.
解离常数 (K <sub>D</sub> )	K <sub>D</sub> = 1.40 x 10 <sup>-10</sup> M



存储溶液	pH: 7.20
------	----------

**纯度**

## 克隆

克隆编号

**同种型**

## 应用

## The Abpromise guarantee

**Abpromise™ 承诺保证使用ab124915于以下的经测试应用**

“应用说明”部分 下显示的仅为推荐的起始稀释度;实际最佳的稀释度/浓度应由使用者检定。

应用	Ab评论	说明
<b>WB</b>		1/10000 - 1/50000. Detects a band of approximately 49 kDa (predicted molecular weight: 51 kDa).
<b>IHC-P</b>		1/500 - 1/1000. Perform heat mediated antigen retrieval with citrate buffer pH 6 before commencing with IHC staining protocol.

**应用说明** Is unsuitable for IP.

### 靶标

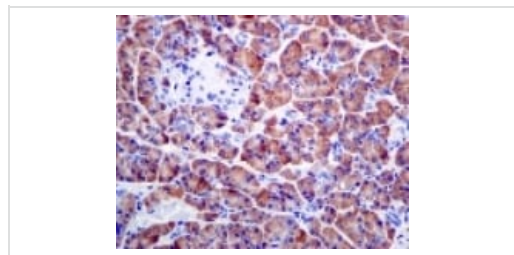
## 序列相似性

Contains 1 PLAT domain.

### 细胞定位

Secreted.

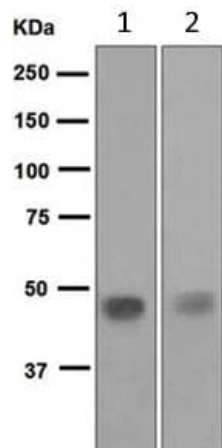
图片



Immunohistochemistry (Formalin/PFA-fixed paraffin-embedded sections) - Anti-Pancreatic Lipase/PTL antibody [EPR6276] (ab124915)

ab124915, at 1/500 dilution, staining Pancreatic Lipase/PTL in paraffin embedded Human pancreas tissue by immunohistochemistry.

Perform heat mediated antigen retrieval with citrate buffer pH 6 before commencing with IHC staining protocol.



Western blot - Anti-Pancreatic Lipase/PTL antibody [EPR6276] (ab124915)

**All lanes** : Anti-Pancreatic Lipase/PTL antibody [EPR6276] (ab124915) at 1/10000 dilution

**Lane 1** : Human pancreas lysate

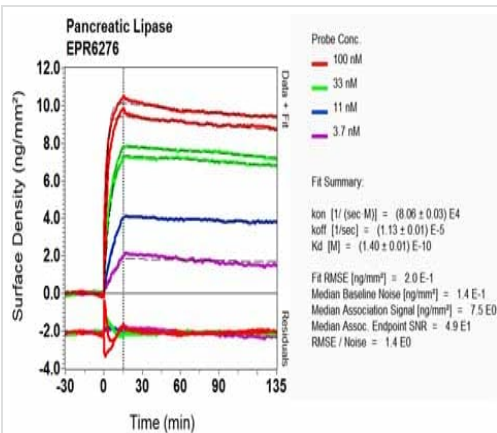
**Lane 2** : Human small intestine lysate

Lysates/proteins at 10 µg per lane.

### Secondary

**All lanes** : HRP labelled goat anti-rabbit at 1/2000 dilution

**Predicted band size:** 51 kDa



SPR Scanning - Anti-Pancreatic Lipase/PTL antibody [EPR6276] (ab124915)

Equilibrium dissociation constant ( $K_D$ )

Learn more about  $K_D$

[Click here to learn more about  \$K\_D\$](#)

### Why choose a recombinant antibody?



**Research with confidence**  
Consistent and reproducible results



**Long-term and scalable supply**  
Recombinant technology



**Success from the first experiment**  
Confirmed specificity



**Ethical standards compliant**  
Animal-free production

Anti-Pancreatic Lipase/PTL antibody [EPR6276]  
(ab124915)

**Please note:** All products are "FOR RESEARCH USE ONLY. NOT FOR USE IN DIAGNOSTIC PROCEDURES"

### Our Abpromise to you: Quality guaranteed and expert technical support

---

- Replacement or refund for products not performing as stated on the datasheet
- Valid for 12 months from date of delivery
- Response to your inquiry within 24 hours
- We provide support in Chinese, English, French, German, Japanese and Spanish
- Extensive multi-media technical resources to help you
- We investigate all quality concerns to ensure our products perform to the highest standards

If the product does not perform as described on this datasheet, we will offer a refund or replacement. For full details of the Abpromise, please visit <https://www.abcam.cn/abpromise> or contact our technical team.

### Terms and conditions

---

- Guarantee only valid for products bought direct from Abcam or one of our authorized distributors