

Anti-Pancreatic Lipase/PTL antibody ab96100

[2 References](#) [2 图像](#)

概述

产品名称	Anti-Pancreatic Lipase/PTL抗体
描述	兔多克隆抗体to Pancreatic Lipase/PTL
宿主	Rabbit
经测试应用	适用于: WB, ICC/IF
种属反应性	与反应: Human
免疫原	Recombinant fragment corresponding to Human Pancreatic Lipase/PTL aa 21-270. Database link: NP_000927
阳性对照	293T whole cell lysate; A549 cells; A431, H1299, HeLa, HepG2, Molt-4 and Raji cell lines
常规说明	<p>The Life Science industry has been in the grips of a reproducibility crisis for a number of years. Abcam is leading the way in addressing this with our range of recombinant monoclonal antibodies and knockout edited cell lines for gold-standard validation. Please check that this product meets your needs before purchasing.</p> <p>If you have any questions, special requirements or concerns, please send us an inquiry and/or contact our Support team ahead of purchase. Recommended alternatives for this product can be found below, along with publications, customer reviews and Q&As</p>

性能

形式	Liquid
存放说明	Shipped at 4°C. Upon delivery aliquot and store at -20°C or -80°C. Avoid repeated freeze / thaw cycles.
存储溶液	pH: 7.00 Preservative: 0.01% Thimerosal (merthiolate) Constituents: 1.21% Tris, 0.75% Glycine, 10% Glycerol (glycerin, glycerine)
纯度	Immunogen affinity purified
克隆	多克隆
同种型	IgG

应用

The Abpromise guarantee

Abpromise™ 承诺保证使用 ab96100 于以下的经测试应用

“应用说明”部分下显示的仅为推荐的起始稀释度；实际最佳的稀释度/浓度应由使用者检定。

应用	Ab评论	说明
WB		1/500 - 1/3000. Predicted molecular weight: 51 kDa.
ICC/IF		1/100 - 1/200.

靶标

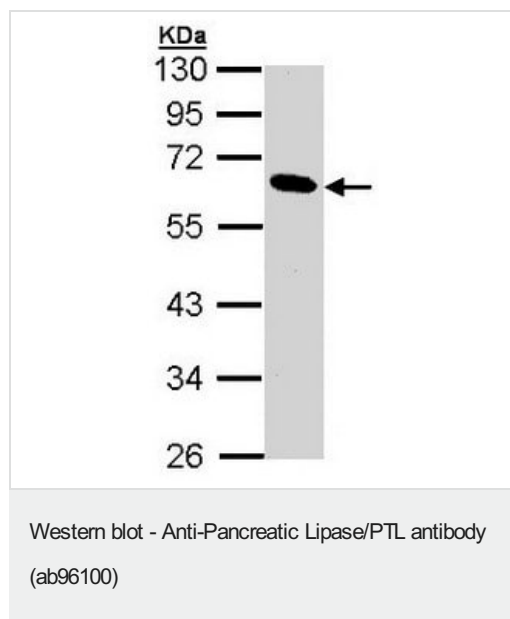
序列相似性

Belongs to the AB hydrolase superfamily. Lipase family.
Contains 1 PLAT domain.

细胞定位

Secreted.

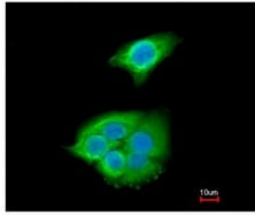
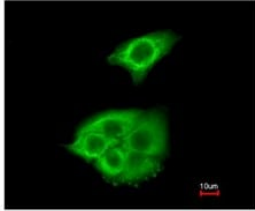
图片



Anti-Pancreatic Lipase/PTL antibody (ab96100) at 1/1000 dilution
+ 293T whole cell lysate at 30 µg

Predicted band size: 51 kDa

10% SDS PAGE



Immunofluorescence analysis of paraformaldehyde-fixed A549, using ab96100 at 1/200 dilution. Lower image merged with DNA probe.

Immunocytochemistry/ Immunofluorescence - Anti-Pancreatic Lipase/PTL antibody (ab96100)

Please note: All products are "FOR RESEARCH USE ONLY. NOT FOR USE IN DIAGNOSTIC PROCEDURES"

Our Abpromise to you: Quality guaranteed and expert technical support

- Replacement or refund for products not performing as stated on the datasheet
- Valid for 12 months from date of delivery
- Response to your inquiry within 24 hours
- We provide support in Chinese, English, French, German, Japanese and Spanish
- Extensive multi-media technical resources to help you
- We investigate all quality concerns to ensure our products perform to the highest standards

If the product does not perform as described on this datasheet, we will offer a refund or replacement. For full details of the Abpromise, please visit <https://www.abcam.cn/abpromise> or contact our technical team.

Terms and conditions

- Guarantee only valid for products bought direct from Abcam or one of our authorized distributors