


### Anti-Pan3 antibody ab88642

★★★★★ [3 Abreviews](#) [2 References](#) [1 图像](#)

#### 概述

产品名称	Anti-Pan3抗体
描述	兔多克隆抗体to Pan3
宿主	Rabbit
经测试应用	适用于: WB
种属反应性	与反应: Human 预测可用于: Mouse, Rat 
免疫原	Synthetic peptide corresponding to Human Pan3 aa 400-500 conjugated to keyhole limpet haemocyanin. (Peptide available as <a href="#">ab102602</a> )
阳性对照	This antibody gave a positive signal in the following lysates: HeLa Whole Cell; HepG2 Whole Cell; MOLT4 Whole Cell; Jurkat Whole Cell; Human Liver Tissue.
常规说明	<p>The Life Science industry has been in the grips of a reproducibility crisis for a number of years. Abcam is leading the way in addressing this with our range of recombinant monoclonal antibodies and knockout edited cell lines for gold-standard validation. Please check that this product meets your needs before purchasing.</p> <p>If you have any questions, special requirements or concerns, please send us an inquiry and/or contact our Support team ahead of purchase. Recommended alternatives for this product can be found below, along with publications, customer reviews and Q&amp;As</p>

#### 性能

形式	Liquid
存放说明	Shipped at 4°C. Store at +4°C short term (1-2 weeks). Upon delivery aliquot. Store at -20°C or -80°C. Avoid freeze / thaw cycle.
存储溶液	pH: 7.40 Preservative: 0.02% Sodium azide Constituent: PBS
	Batches of this product that have a concentration < 1mg/ml may have BSA added as a stabilising agent. If you would like information about the formulation of a specific lot, please contact our scientific support team who will be happy to help.

纯度	Immunogen affinity purified
克隆	多克隆
同种型	IgG

## 应用

**The Abpromise guarantee** **Abpromise™**承诺保证使用ab88642于以下的经测试应用

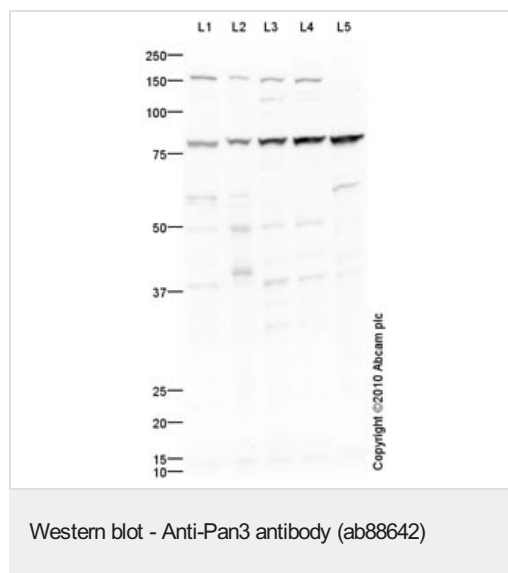
“应用说明”部分 下显示的仅为推荐的起始稀释度;实际最佳的稀释度/浓度应由使用者检定。

应用	Ab评论	说明
WB	★★★★★ (2)	Use a concentration of 1 µg/ml. Detects a band of approximately 80 kDa (predicted molecular weight: 82 kDa).

## 靶标

功能	Functions in cytoplasmic mRNA decay. As part of the Pan nuclease complex, recruits polyadenylate-binding protein which in turn stimulates PAN2 nuclease activity.
序列相似性	Belongs to the protein kinase superfamily. Contains 1 protein kinase domain.
结构域	The protein kinase domain is predicted to be catalytically inactive.
细胞定位	Cytoplasm.

## 图片



**All lanes** : Anti-Pan3 antibody (ab88642) at 1 µg/ml

**Lane 1** : HeLa (Human epithelial carcinoma cell line) Whole Cell Lysate

**Lane 2** : HepG2 (Human hepatocellular liver carcinoma cell line) Whole Cell Lysate

**Lane 3** : MOLT4 (Human acute lymphoblastic leukemia cell line) Whole Cell Lysate

**Lane 4** : Jurkat (Human T cell lymphoblast-like cell line) Whole Cell Lysate

**Lane 5** : Human liver tissue lysate - total protein ([ab29889](#))

Lysates/proteins at 10 µg per lane.

### Secondary

**All lanes** : Goat Anti-Rabbit IgG H&L (HRP) preadsorbed ([ab97080](#)) at 1/5000 dilution

Developed using the ECL technique.

Performed under reducing conditions.

**Predicted band size:** 82 kDa

**Observed band size:** 80 kDa

**Additional bands at:** 160 kDa, 60 kDa. We are unsure as to the identity of these extra bands.

**Exposure time:** 1 minute

**Please note:** All products are "FOR RESEARCH USE ONLY. NOT FOR USE IN DIAGNOSTIC PROCEDURES"

#### **Our Abpromise to you: Quality guaranteed and expert technical support**

---

- Replacement or refund for products not performing as stated on the datasheet
- Valid for 12 months from date of delivery
- Response to your inquiry within 24 hours
- We provide support in Chinese, English, French, German, Japanese and Spanish
- Extensive multi-media technical resources to help you
- We investigate all quality concerns to ensure our products perform to the highest standards

If the product does not perform as described on this datasheet, we will offer a refund or replacement. For full details of the Abpromise, please visit <https://www.abcam.cn/abpromise> or contact our technical team.

#### **Terms and conditions**

---

- Guarantee only valid for products bought direct from Abcam or one of our authorized distributors