

Anti-Pan-SAPAP antibody ab67224

[1 Abreviews](#) [1 图像](#)

概述

产品名称	Anti-Pan-SAPAP抗体
描述	兔多克隆抗体to Pan-SAPAP
宿主	Rabbit
特异性	Please note that the immunogen that generated ab67224 shares some sequence with other SAPAP/DLGAP proteins, including SAPAP1, SAPAP2, and SAPAP4, and preliminary data suggests this antibody may not be specific for SAPAP3.
经测试应用	适用于: WB
种属反应性	与反应: Rat
免疫原	Synthetic peptide corresponding to Human Pan-SAPAP.
阳性对照	WB: Rat brain tissue lysate.
常规说明	<p>The Life Science industry has been in the grips of a reproducibility crisis for a number of years. Abcam is leading the way in addressing this with our range of recombinant monoclonal antibodies and knockout edited cell lines for gold-standard validation. Please check that this product meets your needs before purchasing.</p> <p>If you have any questions, special requirements or concerns, please send us an inquiry and/or contact our Support team ahead of purchase. Recommended alternatives for this product can be found below, along with publications, customer reviews and Q&As</p>

性能

形式	Liquid
存放说明	Shipped at 4°C. Store at +4°C.
存储溶液	pH: 7.2 Preservative: 0.02% Sodium azide Constituent: PBS
纯度	Immunogen affinity purified
克隆	多克隆
同种型	IgG

应用

The Abpromise guarantee **Abpromise™**承诺保证使用ab67224于以下的经测试应用

“应用说明”部分 下显示的仅为推荐的起始稀释度;实际最佳的稀释度/浓度应由使用者检定。

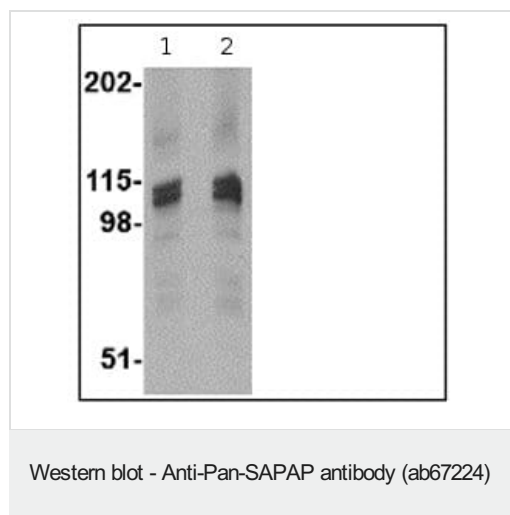
应用	Ab评论	说明
WB		Use a concentration of 1 - 2 µg/ml. Detects a band of approximately 106 kDa (predicted molecular weight: 106 kDa).

靶标

相关性 SAPAP3, (DLGAP3) is a member of a protein family whose members specifically interact with PSD-95/SAP90, a membrane-associated guanylate kinase localized at postsynaptic density (PSD) in neuronal cells. Like the other SAPAP proteins, SAPAP3 is thought to be an adaptor protein that also interacts with different synaptic scaffolding proteins, cytoskeletal and signaling components, such as focal adhesion kinase (FAK) and proline-rich tyrosine kinase 2 (PYK2). Both SAPAP3 protein and mRNA are targeted to dendrites, whereas SAPAP1, -2, and -4 mRNAs are detected mainly in cell bodies. Recent experiments have suggested that SAPAP3 may be involved in obsessive-compulsive disorder (OCD), as mice lacking SAPAP3 exhibited OCD-like symptoms which could be relieved by lentiviral-mediated selective expression of SAPAP3 in the striatum of SAPAP3-mutant mice. At least two isoforms are known to exist.

细胞定位 Cell Membrane

图片



Lane 1 : Anti-Pan-SAPAP antibody (ab67224) at 1 µg/ml

Lane 2 : Anti-Pan-SAPAP antibody (ab67224) at 2 µg/ml

All lanes : rat brain tissue lysate

Lysates/proteins at 15 µg per lane.

Predicted band size: 106 kDa

Observed band size: 106 kDa

Please note: All products are "FOR RESEARCH USE ONLY. NOT FOR USE IN DIAGNOSTIC PROCEDURES"

Our Abpromise to you: Quality guaranteed and expert technical support

- Replacement or refund for products not performing as stated on the datasheet
- Valid for 12 months from date of delivery
- Response to your inquiry within 24 hours

- We provide support in Chinese, English, French, German, Japanese and Spanish
- Extensive multi-media technical resources to help you
- We investigate all quality concerns to ensure our products perform to the highest standards

If the product does not perform as described on this datasheet, we will offer a refund or replacement. For full details of the Abpromise, please visit <https://www.abcam.cn/abpromise> or contact our technical team.

Terms and conditions

- Guarantee only valid for products bought direct from Abcam or one of our authorized distributors