

### Anti-pan CEACAM antibody [TET2] ab26283

**4 References**   [1 图像](#)

#### 概述

产品名称	Anti-pan CEACAM抗体[TET2]
描述	小鼠单克隆抗体[TET2] to pan CEACAM
宿主	Mouse
特异性	ab26283 is a broadly reactive antibody which reacts with most of the CEACAM molecules characterized to date (except CEACAM3, CEACAM4 and CEACAM7)4. It can be used to detect CEACAM1 (BGP/CD66a), CEACAM5 (CEA/CD66e), CEACAM6 (NCA/CD66c) and CEACAM8 (CGM6/CD66b) on transiently transfected BOSC23 cells by flow cytometry.
经测试应用	<b>适用于:</b> Flow Cyt
种属反应性	<b>与反应:</b> Human
免疫原	ab26283 was generated by immunisation of BALB/c mice with CEA partially purified from a perchloric acid extract from liver metastases of colonic tumors.
常规说明	<p>The Life Science industry has been in the grips of a reproducibility crisis for a number of years. Abcam is leading the way in addressing this with our range of recombinant monoclonal antibodies and knockout edited cell lines for gold-standard validation. Please check that this product meets your needs before purchasing.</p> <p>If you have any questions, special requirements or concerns, please send us an inquiry and/or contact our Support team ahead of purchase. Recommended alternatives for this product can be found below, along with publications, customer reviews and Q&amp;As</p>

#### 性能

形式	Liquid
存放说明	Shipped at 4°C. Store at +4°C short term (1-2 weeks). Store at -20°C or -80°C. Avoid freeze / thaw cycle.
存储溶液	pH: 7.20 Preservative: 0.01% Sodium azide Constituent: PBS
纯度	Protein G purified
克隆	单克隆
克隆编号	TET2
同种型	IgG2b

## 应用

**The Abpromise guarantee**      **Abpromise™** 承诺保证使用 ab26283 于以下的经测试应用

“应用说明”部分 下显示的仅为推荐的起始稀释度;实际最佳的稀释度/浓度应由使用者检定。

应用	Ab 评论	说明
Flow Cyt		Use 1µg for 10 <sup>6</sup> cells. <b>ab170192</b> - Mouse monoclonal IgG2b, is suitable for use as an isotype control with this antibody.

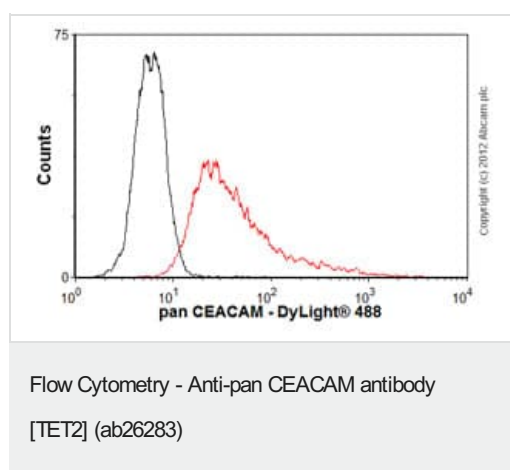
## 靶标

**相关性**

CEA-related cell adhesion molecules (CEACAM) belong to the carcinoembryonic antigen (CEA) family. It consists of seven CEACAM (CEACAM 1, CEACAM 3-CEACAM 8) and 11 pregnancy-specific glyco-protein (PSG 1-PSG 11) members. The CEA family proteins belong to the immunoglobulin (Ig) superfamily and are composed of one Ig variable-like (IgV) and a varying number (0-6) of Ig constant-like (IgC) domains. CEACAM molecules are membrane-bound either via a transmembrane domain or a glycosyl phosphatidyl inositol (GPI) anchor. CEACAM molecules are differentially expressed in epithelial cells or in leucocytes. Over-expression of CEA/CEACAM 5 in tumors of epithelial origin is the basis of its wide-spread use as a tumor marker. The function of CEACAM family members varies widely: they function as cell adhesion molecules, tumor suppressors, regulators of lymphocyte and dendritic cell activation, receptors of Neisseria species and other bacteria.

**细胞定位**      Cell Membrane

## 图片



Overlay histogram showing Caco 2 cells stained with ab26283 (red line). The cells were fixed with 80% methanol (5 min) and incubated in 1x PBS / 10% normal goat serum / 0.3M glycine to block non-specific protein-protein interactions. The cells were then incubated with the antibody (ab26283, 1µg/1x10<sup>6</sup> cells) for 30 min at 22°C. The secondary antibody used was DyLight® 488 goat anti-mouse IgG (H+L) (**ab96879**) at 1/500 dilution for 30 min at 22°C. Isotype control antibody (black line) was mouse IgG2b [PLPV219] (**ab91366**, 2µg/1x10<sup>6</sup> cells) used under the same conditions. Acquisition of >5,000 events was performed.

Please note that Abcam do not have any data for use of this antibody on non-fixed cells. We welcome any customer feedback.

**Please note:** All products are "FOR RESEARCH USE ONLY. NOT FOR USE IN DIAGNOSTIC PROCEDURES"

### **Our Abpromise to you: Quality guaranteed and expert technical support**

---

- Replacement or refund for products not performing as stated on the datasheet
- Valid for 12 months from date of delivery
- Response to your inquiry within 24 hours
  
- We provide support in Chinese, English, French, German, Japanese and Spanish
- Extensive multi-media technical resources to help you
- We investigate all quality concerns to ensure our products perform to the highest standards

If the product does not perform as described on this datasheet, we will offer a refund or replacement. For full details of the Abpromise, please visit <https://www.abcam.cn/abpromise> or contact our technical team.

### **Terms and conditions**

---

- Guarantee only valid for products bought direct from Abcam or one of our authorized distributors