


Anti-PAK1 (phospho T423) + PAK2 (phospho T402) + PAK3 (phospho T436) antibody ab62155

1 图像

概述

产品名称	Anti-PAK1 (phospho T423) + PAK2 (phospho T402) + PAK3 (phospho T436)抗体
描述	兔多克隆抗体to PAK1 (phospho T423) + PAK2 (phospho T402) + PAK3 (phospho T436)
宿主	Rabbit
特异性	Detects endogenous levels of PAK1, PAK2 and PAK3 only when phosphorylated at threonine 423, threonine 402 and threonine 421 respectively (Human: Thr423/402/421; Mouse: Thr423/402/421; Rat: Thr422/402/421).
经测试应用	适用于: IHC-P
种属反应性	与反应: Human 预测可用于: Rat 
免疫原	Synthetic peptide within Human PAK1 aa 350-450 (phospho T423). The exact immunogen sequence used to generate this antibody is proprietary information. If additional detail on the immunogen is needed to determine the suitability of the antibody for your needs, please contact our Scientific Support team to discuss your requirements. Database link: Q13153 Run BLAST with Run BLAST with
常规说明	The Life Science industry has been in the grips of a reproducibility crisis for a number of years. Abcam is leading the way in addressing this with our range of recombinant monoclonal antibodies and knockout edited cell lines for gold-standard validation. Please check that this product meets your needs before purchasing. If you have any questions, special requirements or concerns, please send us an inquiry and/or contact our Support team ahead of purchase. Recommended alternatives for this product can be found below, along with publications, customer reviews and Q&As
性能	
形式	Liquid
存放说明	Shipped at 4°C. Store at -20°C. Stable for 12 months at -20°C.
存储溶液	pH: 7.40 Preservative: 0.02% Sodium azide Constituents: PBS, 50% Glycerol (glycerin, glycerine), 0.87% Sodium chloride

纯度	Immunogen affinity purified
纯化说明	Purified from rabbit antiserum by affinity chromatography using epitope specific phosphopeptide. The antibody against non-phosphopeptide was removed by chromatography using non-phosphopeptide corresponding to the phosphorylation site.
克隆	多克隆
同种型	IgG

应用

The Abpromise guarantee **Abpromise™**承诺保证使用ab62155于以下的经测试应用

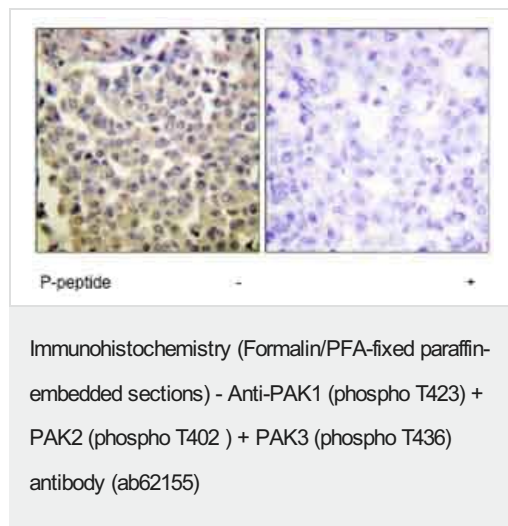
“应用说明”部分下显示的仅为推荐的起始稀释度;实际最佳的稀释度/浓度应由使用者检定。

应用	Ab评论	说明
IHC-P		1/50 - 1/100.

靶标

细胞定位 PAK1: Cytoplasm. Cell junction > focal adhesion. Recruited to focal adhesions upon activation.
 PAK2: Cytoplasm and Nucleus. Cytoplasm > perinuclear region. Membrane. Interaction with ARHGAP10 probably changes PAK-2p34 location to cytoplasmic perinuclear region.
 Myristoylation changes PAK-2p34 location to the membrane. PAK3: Cytoplasmic

图片



Immunohistochemistry analysis of paraffin-embedded human breast carcinoma tissue using PAK1 (phospho T423) + PAK2 (phospho T402) + PAK3 (phospho T436) antibody (ab62155) at 1/50 - 1/100 dilution, in the presence (right panel) and absence (left panel) of immunising phosphopeptide.

Please note: All products are "FOR RESEARCH USE ONLY. NOT FOR USE IN DIAGNOSTIC PROCEDURES"

Our Abpromise to you: Quality guaranteed and expert technical support

- Replacement or refund for products not performing as stated on the datasheet

- Valid for 12 months from date of delivery
- Response to your inquiry within 24 hours

- We provide support in Chinese, English, French, German, Japanese and Spanish
- Extensive multi-media technical resources to help you
- We investigate all quality concerns to ensure our products perform to the highest standards

If the product does not perform as described on this datasheet, we will offer a refund or replacement. For full details of the Abpromise, please visit <https://www.abcam.cn/abpromise> or contact our technical team.

Terms and conditions

- Guarantee only valid for products bought direct from Abcam or one of our authorized distributors