


# Anti-PAK1 (phospho S144) + PAK2 (phospho S141) + PAK3 (phospho S154) antibody ab63513

## 1 图像

### 概述

产品名称	Anti-PAK1 (phospho S144) + PAK2 (phospho S141) + PAK3 (phospho S154)抗体
描述	兔多克隆抗体to PAK1 (phospho S144) + PAK2 (phospho S141) + PAK3 (phospho S154)
宿主	Rabbit
经测试应用	适用于: IHC-P
种属反应性	与反应: Human 预测可用于: Rat 
免疫原	Synthetic peptide within Human PAK3 aa 100-200 (phospho S154). The exact immunogen sequence used to generate this antibody is proprietary information. If additional detail on the immunogen is needed to determine the suitability of the antibody for your needs, please <b>contact</b> our Scientific Support team to discuss your requirements.

 [Run BLAST with](#)

 [Run BLAST with](#)

### 常规说明

The Life Science industry has been in the grips of a reproducibility crisis for a number of years. Abcam is leading the way in addressing this with our range of recombinant monoclonal antibodies and knockout edited cell lines for gold-standard validation. Please check that this product meets your needs before purchasing.

If you have any questions, special requirements or concerns, please send us an inquiry and/or contact our Support team ahead of purchase. Recommended alternatives for this product can be found below, along with publications, customer reviews and Q&As

### 性能

形式	Liquid
存放说明	Shipped at 4°C. Store at -20°C. Stable for 12 months at -20°C.
存储溶液	pH: 7.40 Preservative: 0.02% Sodium azide Constituents: PBS, 50% Glycerol (glycerin, glycerine), 0.87% Sodium chloride
纯度	Immunogen affinity purified
纯化说明	The antibody was affinity-purified from rabbit antiserum by affinity-chromatography using epitope-specific phosphopeptide. The antibody against non-phosphopeptide was removed by chromatography using non-phosphopeptide corresponding to the phosphorylation site.

克隆 多克隆  
同种型 IgG

## 应用

**The Abpromise guarantee** **Abpromise™** 承诺保证使用ab63513于以下的经测试应用

“应用说明”部分 下显示的仅为推荐的起始稀释度;实际最佳的稀释度/浓度应由使用者检定。

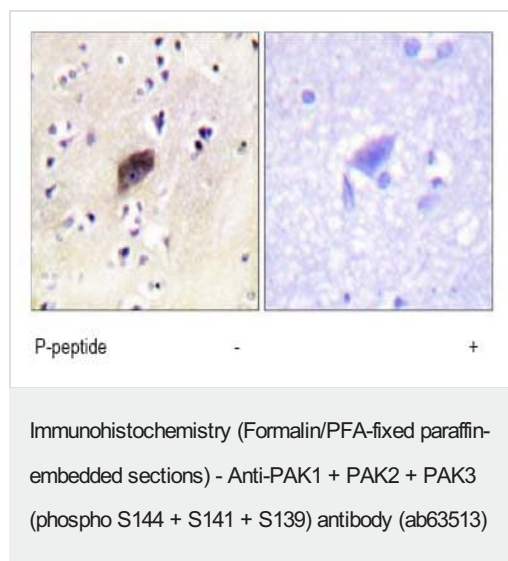
应用	Ab评论	说明
IHC-P		1/50 - 1/100.

## 靶标

### 细胞定位

PAK1: Cytoplasm. Cell junction > focal adhesion. Recruited to focal adhesions upon activation.  
PAK2: Cytoplasm and Nucleus. Cytoplasm > perinuclear region. Membrane. Interaction with ARHGAP10 probably changes PAK-2p34 location to cytoplasmic perinuclear region.  
Myristoylation changes PAK-2p34 location to the membrane. PAK3: Cytoplasmic

## 图片



ab63513 at a 1:50 dilution, staining PAK1 + PAK2 + PAK3 in human brain tissue  
Left image un-treated.  
Right image treated with phosphopeptide.

**Please note:** All products are "FOR RESEARCH USE ONLY. NOT FOR USE IN DIAGNOSTIC PROCEDURES"

## Our Abpromise to you: Quality guaranteed and expert technical support

- Replacement or refund for products not performing as stated on the datasheet
- Valid for 12 months from date of delivery
- Response to your inquiry within 24 hours
- We provide support in Chinese, English, French, German, Japanese and Spanish

- Extensive multi-media technical resources to help you
- We investigate all quality concerns to ensure our products perform to the highest standards

If the product does not perform as described on this datasheet, we will offer a refund or replacement. For full details of the Abpromise, please visit <https://www.abcam.cn/abpromise> or contact our technical team.

### **Terms and conditions**

---

- Guarantee only valid for products bought direct from Abcam or one of our authorized distributors