


Anti-PAF-R antibody ab104162

★★★★☆ [1 Abreviews](#) [9 References](#) [1 图像](#)

概述

产品名称	Anti-PAF-R抗体
描述	兔多克隆抗体to PAF-R
宿主	Rabbit
经测试应用	适用于: ICC, IP, WB, Flow Cyt
种属反应性	与反应: Human 预测可用于: Mouse, Rat, Pig, Rhesus monkey 
免疫原	Synthetic peptide corresponding to Human PAF-R aa 1-100 (N terminal) conjugated to keyhole limpet haemocyanin. Run BLAST with Expasy Run BLAST with NCBI
常规说明	<p>The Life Science industry has been in the grips of a reproducibility crisis for a number of years. Abcam is leading the way in addressing this with our range of recombinant monoclonal antibodies and knockout edited cell lines for gold-standard validation. Please check that this product meets your needs before purchasing.</p> <p>If you have any questions, special requirements or concerns, please send us an inquiry and/or contact our Support team ahead of purchase. Recommended alternatives for this product can be found below, along with publications, customer reviews and Q&As</p>

性能

形式	Liquid
存放说明	Shipped at 4°C. Store at -20°C. Stable for 12 months at -20°C.
存储溶液	pH: 7.40 Preservative: 0.02% Sodium azide Constituents: Tris buffered saline, 0.05% BSA, 50% Glycerol
纯度	Immunogen affinity purified
克隆	多克隆
同种型	IgG

应用

The Abpromise guarantee

Abpromise™ 承诺保证使用 ab104162 于以下的经测试应用

“应用说明”部分下显示的仅为推荐的起始稀释度；实际最佳的稀释度/浓度应由使用者检定。

应用	Ab评论	说明
ICC		Use at an assay dependent concentration.
IP		Use at an assay dependent concentration.
WB		1/200. Predicted molecular weight: 39 kDa.
Flow Cyt		Use at an assay dependent concentration. ab171870 - Rabbit polyclonal IgG, is suitable for use as an isotype control with this antibody.

靶标

功能

Receptor for platelet activating factor, a chemotactic phospholipid mediator that possesses potent inflammatory, smooth-muscle contractile and hypotensive activity. Seems to mediate its action via a G protein that activates a phosphatidylinositol-calcium second messenger system.

组织特异性

Expressed in the placenta, lung, left and right heart ventricles, heart atrium, leukocytes and differentiated HL-60 granulocytes.

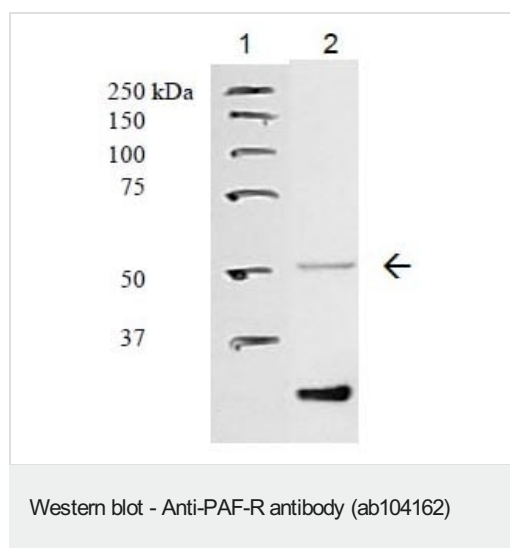
序列相似性

Belongs to the G-protein coupled receptor 1 family.

细胞定位

Cell membrane.

图片



All lanes : Anti-PAF-R antibody (ab104162) at 1 µg/ml

Lane 1 : Molecular weight markers

Lane 2 : A549 membrane fraction at 30 µg

Secondary

All lanes : Anti-rabbit IgG (HRP) conjugate at 1/10000 dilution

Developed using the ECL technique.

Predicted band size: 39 kDa

Please note: All products are "FOR RESEARCH USE ONLY. NOT FOR USE IN DIAGNOSTIC PROCEDURES"

Our Abpromise to you: Quality guaranteed and expert technical support

- Replacement or refund for products not performing as stated on the datasheet
- Valid for 12 months from date of delivery
- Response to your inquiry within 24 hours

- We provide support in Chinese, English, French, German, Japanese and Spanish
- Extensive multi-media technical resources to help you
- We investigate all quality concerns to ensure our products perform to the highest standards

If the product does not perform as described on this datasheet, we will offer a refund or replacement. For full details of the Abpromise, please visit <https://www.abcam.cn/abpromise> or contact our technical team.

Terms and conditions

- Guarantee only valid for products bought direct from Abcam or one of our authorized distributors