

Anti-PABPC1L antibody ab233280

2 References **3 图像**

概述

产品名称	Anti-PABPC1L抗体
描述	兔多克隆抗体to PABPC1L
宿主	Rabbit
经测试应用	适用于: IHC-P, WB
种属反应性	与反应: Rat, Human
免疫原	Recombinant fragment (His-tag) corresponding to Human PABPC1L aa 500 to the C-terminus. Expressed in E.coli. N-terminal tag. Database link: Q4VXU2
	<div>  Run BLAST with  Run BLAST with </div>
阳性对照	IHC-P: Human liver tissue. WB: Rat liver lysate; Recombinant human PABPC1L protein.
常规说明	<p>The Life Science industry has been in the grips of a reproducibility crisis for a number of years. Abcam is leading the way in addressing this with our range of recombinant monoclonal antibodies and knockout edited cell lines for gold-standard validation. Please check that this product meets your needs before purchasing.</p> <p>If you have any questions, special requirements or concerns, please send us an inquiry and/or contact our Support team ahead of purchase. Recommended alternatives for this product can be found below, along with publications, customer reviews and Q&As</p>

性能

形式	Liquid
存放说明	Shipped at 4°C. Store at +4°C short term (1-2 weeks). Upon delivery aliquot. Store at -20°C long term. Avoid freeze / thaw cycle.
存储溶液	pH: 7.40 Preservative: 0.011% Proclin 300 Constituents: 55.77% Glycerol (glycerin, glycerine), 44.219% PBS
纯度	Protein A purified
纯化说明	ab233280 was purified by antigen-specific affinity chromatography followed by Protein A affinity chromatography.
克隆	多克隆
同种型	IgG

应用

The Abpromise guarantee **Abpromise™**承诺保证使用ab233280于以下的经测试应用

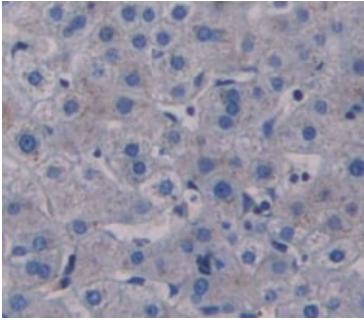
“应用说明”部分 下显示的仅为推荐的起始稀释度;实际最佳的稀释度/浓度应由使用者检定。

应用	Ab评论	说明
IHC-P		Use a concentration of 5 - 20 µg/ml.
WB		Use a concentration of 0.2 - 2 µg/ml. Predicted molecular weight: 63 kDa.

靶标

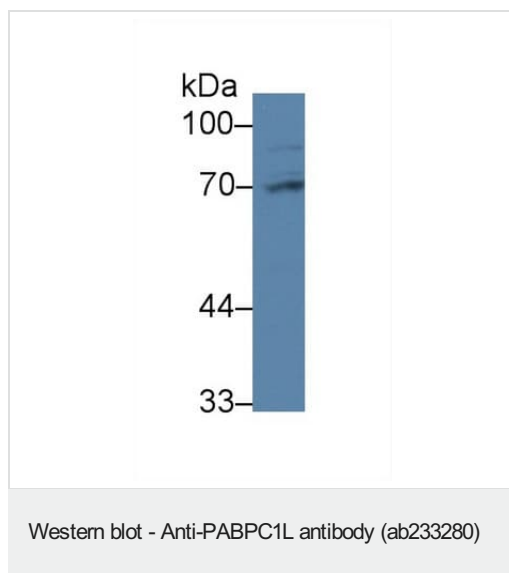
序列相似性 Belongs to the polyadenylate-binding protein type-1 family.
Contains 1 PABC domain.
Contains 4 RRM (RNA recognition motif) domains.

图片



Immunohistochemistry (Formalin/PFA-fixed paraffin-embedded sections) - Anti-PABPC1L antibody (ab233280)

Formalin-fixed, paraffin-embedded human liver tissue stained for PABPC1L using ab233280 at 20 µg/ml in immunohistochemical analysis. DAB staining.

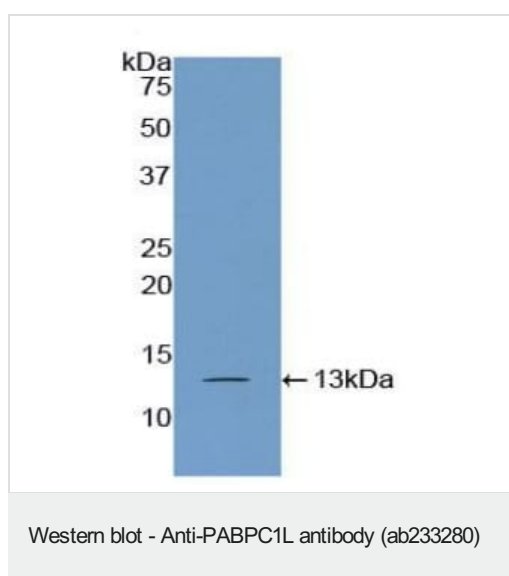


Anti-PABPC1L antibody (ab233280) at 2 µg/ml + Rat liver lysate

Secondary

HRP-Linked Goat Anti-Rabbit IgG Polyclonal at 0.2 µg/ml

Predicted band size: 63 kDa



Anti-PABPC1L antibody (ab233280) at 2 µg/ml + Recombinant human PABPC1L protein

Predicted band size: 63 kDa

Please note: All products are "FOR RESEARCH USE ONLY. NOT FOR USE IN DIAGNOSTIC PROCEDURES"

Our Abpromise to you: Quality guaranteed and expert technical support

- Replacement or refund for products not performing as stated on the datasheet
- Valid for 12 months from date of delivery
- Response to your inquiry within 24 hours
- We provide support in Chinese, English, French, German, Japanese and Spanish
- Extensive multi-media technical resources to help you
- We investigate all quality concerns to ensure our products perform to the highest standards

If the product does not perform as described on this datasheet, we will offer a refund or replacement. For full details of the Abpromise, please visit <https://www.abcam.cn/abpromise> or contact our technical team.

Terms and conditions

- Guarantee only valid for products bought direct from Abcam or one of our authorized distributors