

Anti-p57 Kip2 antibody [EP2718(2)] ab133531

敲除验证 RabMAb

★★★★★ 2 Abreviews 1 References 4 图像

概述

产品名称	Anti-p57 Kip2抗体[EP2718(2)]
描述	兔单克隆抗体[EP2718(2)] to p57 Kip2
宿主	Rabbit
经测试应用	适用于: WB, IHC-P, IP 不适用于: Flow Cyt or ICC/IF
种属反应性	与反应: Human
免疫原	Synthetic peptide. This information is proprietary to Abcam and/or its suppliers.
阳性对照	WB: HeLa treated with dexamethasone, HeLa, SH-SY5Y, 293T cell lysates, Wild-type HeLa Vehicle Control Dexamethasone, Wild-type HeLa Treated Dexamethasone and SH-SY5Y cell lysate. IHC: Human placenta tissue. IP: HeLa.
常规说明	<p>Our RabMAb[®] technology is a patented hybridoma-based technology for making rabbit monoclonal antibodies. For details on our patents, please refer to RabMAb[®] patents.</p> <p>The Life Science industry has been in the grips of a reproducibility crisis for a number of years. Abcam is leading the way in addressing this with our range of recombinant monoclonal antibodies and knockout edited cell lines for gold-standard validation. Please check that this product meets your needs before purchasing.</p> <p>If you have any questions, special requirements or concerns, please send us an inquiry and/or contact our Support team ahead of purchase. Recommended alternatives for this product can be found below, along with publications, customer reviews and Q&As</p> <p>Mouse, Rat: We have preliminary internal testing data to indicate this antibody may not react with these species. Please contact us for more information.</p>

性能

形式	Liquid
存放说明	Shipped at 4°C. Store at -20°C. Stable for 12 months at -20°C.
存储溶液	pH: 7.2 Preservative: 0.05% Sodium azide Constituents: 40% Glycerol (glycerin, glycerine), 9.85% Tris glycine, 50% Tissue culture

	supernatant
纯度	Protein A purified
克隆	单克隆
克隆编号	EP2718(2)
同种型	IgG

应用

The Abpromise guarantee

Abpromise™承诺保证使用ab133531于以下的经测试应用

“应用说明”部分 下显示的仅为推荐的起始稀释度;实际最佳的稀释度/浓度应由使用者检定。

应用	Ab评论	说明
WB	★★★★★ (1)	1/1000 - 1/10000. Predicted molecular weight: 57 kDa.
IHC-P		1/100 - 1/250. Perform heat mediated antigen retrieval with citrate buffer pH 6 before commencing with IHC staining protocol.
IP		1/10 - 1/100.

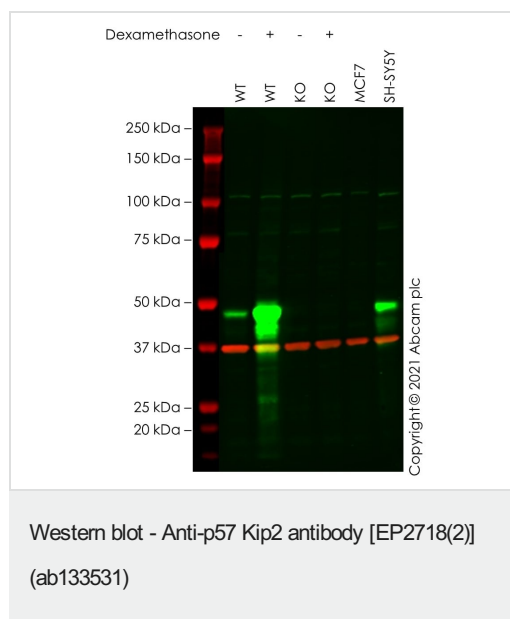
应用说明

Is unsuitable for Flow Cyt or ICC/IF.

靶标

功能	Potent tight-binding inhibitor of several G1 cyclin/CDK complexes (cyclin E-CDK2, cyclin D2-CDK4, and cyclin A-CDK2) and, to lesser extent, of the mitotic cyclin B-CDC2. Negative regulator of cell proliferation. May play a role in maintenance of the non-proliferative state throughout life.
组织特异性	Expressed in the heart, brain, lung, skeletal muscle, kidney, pancreas and testis. High levels are seen in the placenta while low levels are seen in the liver.
疾病相关	Defects in CDKN1C are a cause of Beckwith-Wiedemann syndrome (BWS) [MIM:130650]. BWS is a genetically heterogeneous disorder characterized by anterior abdominal wall defects including exomphalos (omphalocele), pre- and postnatal overgrowth, and macroglossia. Additional less frequent complications include specific developmental defects and a predisposition to embryonal tumors. Note=Defects in CDKN1C are involved in tumor formation.
序列相似性	Belongs to the CDI family.
细胞定位	Nucleus.

图片



All lanes : Anti-p57 Kip2 antibody [EP2718(2)] (ab133531) at 1/1000 dilution

Lane 1 : Wild-type HeLa Vehicle Control Dexamethasone (0 nM, 16 h) [ab277359](#) cell lysate

Lane 2 : Wild-type HeLa Treated Dexamethasone (50 nM, 16 h) [ab287335](#) cell lysate

Lane 3 : CDKN1C knockout HeLa Vehicle Control Dexamethasone (0 nM, 16 h) [ab277299](#) cell lysate

Lane 4 : CDKN1C knockout HeLa Treated Dexamethasone (50 nM, 16 h) [ab281877](#) cell lysate

Lane 5 : MCF7 cell lysate

Lane 6 : SH-SY5Y cell lysate

Lysates/proteins at 20 µg per lane.

Secondary

All lanes : Goat anti-Rabbit IgG H&L (IRDye® 800CW) preabsorbed ([ab216773](#)) and Goat anti-Mouse IgG H&L (IRDye® 800CW) preabsorbed at 1/20000 dilution

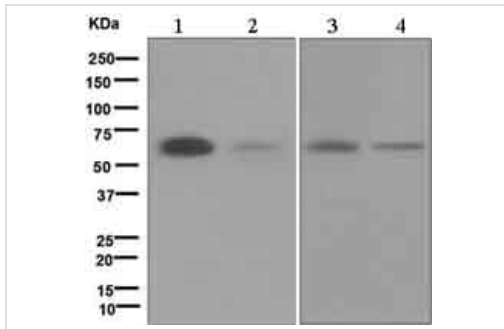
Performed under reducing conditions.

Predicted band size: 57 kDa

Observed band size: 50 kDa

False colour image of Western blot: Anti-p57 Kip2 antibody [EP2718(2)] staining at 1/1000 dilution, shown in green; Mouse anti-GAPDH antibody [6C5] ([ab8245](#)) loading control staining at 1/20000 dilution, shown in red. In Western blot, ab133531 was shown to bind specifically to p57 Kip2. A band was observed at 50 kDa in wild-type HeLa cell lysates with no signal observed at this size in CDKN1C knockout cell line [ab280061](#) (knockout cell lysate [ab280120](#)). To generate this image, wild-type and CDKN1C knockout HeLa cell lysates were analysed. First, samples were run on an SDS-PAGE gel then transferred onto a nitrocellulose membrane. Membranes were blocked in fluorescent western blot

(TBS-based) blocking solution before incubation with primary antibodies overnight at 4 °C. Blots were washed four times in TBS-T, incubated with secondary antibodies for 1 h at room temperature, washed again four times then imaged. Secondary antibodies used were Goat anti-Rabbit IgG H&L (IRDye® 800CW) preabsorbed (**ab216773**) and Goat anti-Mouse IgG H&L (IRDye® 800CW) preabsorbed (**ab216772**) at 1/20000 dilution.



Western blot - Anti-p57 Kip2 antibody [EP2718(2)] (ab133531)

All lanes : Anti-p57 Kip2 antibody [EP2718(2)] (ab133531) at 1/1000 dilution

Lane 1 : Lysate of HeLa cells treated with dexamethasone

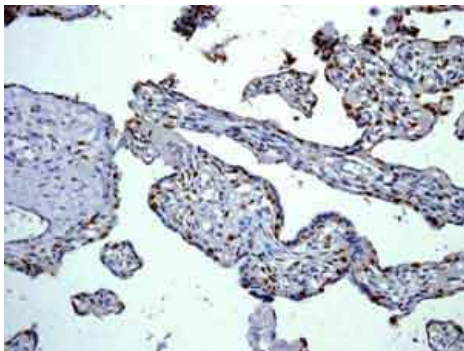
Lane 2 : HeLa cell lysate

Lane 3 : SH-SY5Y cell lysate

Lane 4 : 293T cell lysate

Lysates/proteins at 10 µg per lane.

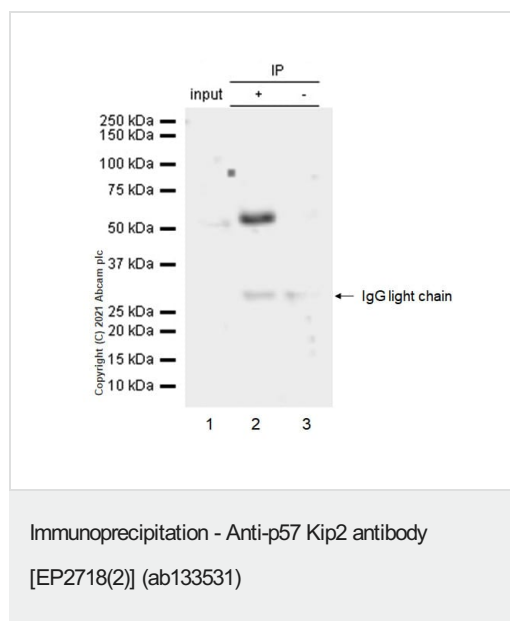
Predicted band size: 57 kDa



Immunohistochemistry (Formalin/PFA-fixed paraffin-embedded sections) - Anti-p57 Kip2 antibody [EP2718(2)] (ab133531)

Immunohistochemistry analysis of Paraffin Embedded Human placenta tissue labelling p57 Kip2 with ab133531 at 1/100.

Perform heat mediated antigen retrieval with citrate buffer pH 6 before commencing with IHC staining protocol.



p57 Kip2 was immunoprecipitated from 0.35 mg HeLa (Human cervix adenocarcinoma epithelial cell) whole cell lysate 10 µg with 133531 at 1/20 dilution (0.8µg). VeriBlot for IP Detection Reagent (HRP)([ab131366](#)) was used at 1/5000 dilution.

Lane 1: HeLa (Human cervix adenocarcinoma epithelial cell) whole cell lysate 10 µg

Lane 2: ab133531 IP in HeLa whole cell lysate

Lane 3: Rabbit monoclonal IgG ([ab172730](#)) instead of ab133531 in HeLa whole cell lysate

Blocking and dilution buffer and concentration: 5% NFDM/TBST.

Please note: All products are "FOR RESEARCH USE ONLY. NOT FOR USE IN DIAGNOSTIC PROCEDURES"

Our Abpromise to you: Quality guaranteed and expert technical support

- Replacement or refund for products not performing as stated on the datasheet
- Valid for 12 months from date of delivery
- Response to your inquiry within 24 hours
- We provide support in Chinese, English, French, German, Japanese and Spanish
- Extensive multi-media technical resources to help you
- We investigate all quality concerns to ensure our products perform to the highest standards

If the product does not perform as described on this datasheet, we will offer a refund or replacement. For full details of the Abpromise, please visit <https://www.abcam.cn/abpromise> or contact our technical team.

Terms and conditions

- Guarantee only valid for products bought direct from Abcam or one of our authorized distributors