


### Anti-p35 antibody ab64960

[2 References](#) [2 图像](#)

#### 概述

---

产品名称	Anti-p35抗体
描述	兔多克隆抗体to p35
宿主	Rabbit
经测试应用	适用于: WB, ICC/IF
种属反应性	与反应: Rat, Human 预测可用于: Mouse 
免疫原	Synthetic peptide (Human) from an internal sequence
常规说明	<p>The Life Science industry has been in the grips of a reproducibility crisis for a number of years. Abcam is leading the way in addressing this with our range of recombinant monoclonal antibodies and knockout edited cell lines for gold-standard validation. Please check that this product meets your needs before purchasing.</p> <p>If you have any questions, special requirements or concerns, please send us an inquiry and/or contact our Support team ahead of purchase. Recommended alternatives for this product can be found below, along with publications, customer reviews and Q&amp;As</p>

#### 性能

---

形式	Liquid
存放说明	Shipped at 4°C. Store at -20°C. Stable for 12 months at -20°C.
存储溶液	pH: 7.40 Preservative: 0.02% Sodium azide Constituents: PBS, 50% Glycerol (glycerin, glycerine), 0.87% Sodium chloride
纯度	Without Mg <sup>2+</sup> and Ca <sup>2+</sup> Immunogen affinity purified
克隆	多克隆
同种型	IgG

#### 应用

---

## The Abpromise guarantee

**Abpromise™** 承诺保证使用 ab64960 于以下的经测试应用

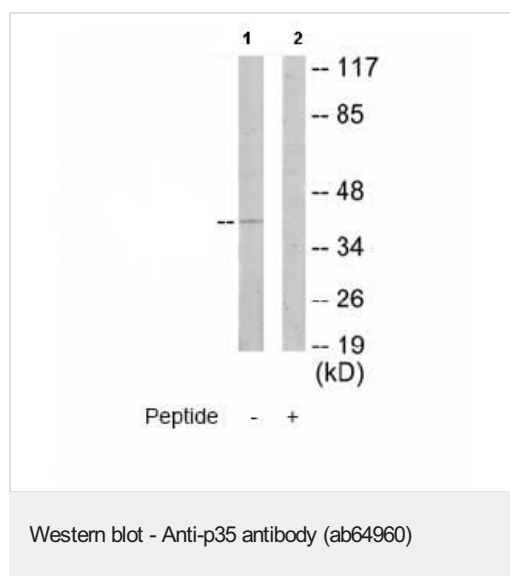
“应用说明”部分 下显示的仅为推荐的起始稀释度；实际最佳的稀释度/浓度应由使用者检定。

应用	Ab评论	说明
WB		1/500 - 1/1000. Detects a band of approximately 40 kDa (predicted molecular weight: 34 kDa).
ICC/IF		1/500 - 1/1000.

## 靶标

<b>功能</b>	p35 is a neuron specific activator of CDK5. The complex p35/CDK5 is required for neurite outgrowth and cortical lamination. Activator of TPKII.
<b>组织特异性</b>	Brain and neuron specific.
<b>序列相似性</b>	Belongs to the cyclin-dependent kinase 5 activator family.
<b>翻译后修饰</b>	The p35 form is proteolytically cleaved by calpain, giving rise to the p25 form. P35 has a 5 to 10 fold shorter half-life compared to p25. The conversion results in deregulation of the CDK5 kinase: p25/CDK5 kinase displays an increased and altered tau phosphorylation in comparison to the p35/CDK5 kinase in vivo. Probably myristoylated. The Gly-2-Ala mutant is absent of the cell periphery, suggesting that a proper myristoylation signal is essential for the proper distribution of p35.
<b>细胞定位</b>	Cell membrane. In the primary cortical neurons, p35 is present in the peripheries and nerve terminals and Nucleus. Cytoplasm > perinuclear region. The conversion of p35 to p25 relocalizes the protein from the cell periphery to the cytoplasm, in nuclear and perinuclear regions. In the primary cortical neurons, p25 is primarily concentrated in the cell soma and is largely absent from neurites.

## 图片



**All lanes** : Anti-p35 antibody (ab64960) at 1/500 dilution

**Lane 1** : Rat brain cell extract

**Lane 2** : Rat brain cell extract with immunising peptide at 5 µg

Lysates/proteins at 5 µg per lane.

**Predicted band size:** 34 kDa

**Observed band size:** 40 kDa



Immunofluorescence analysis of HeLa cells, using ab64960 at 1/500 dilution. Right hand panel was also treated with immunising peptide.

**Please note:** All products are "FOR RESEARCH USE ONLY. NOT FOR USE IN DIAGNOSTIC PROCEDURES"

### Our Abpromise to you: Quality guaranteed and expert technical support

---

- Replacement or refund for products not performing as stated on the datasheet
- Valid for 12 months from date of delivery
- Response to your inquiry within 24 hours
- We provide support in Chinese, English, French, German, Japanese and Spanish
- Extensive multi-media technical resources to help you
- We investigate all quality concerns to ensure our products perform to the highest standards

If the product does not perform as described on this datasheet, we will offer a refund or replacement. For full details of the Abpromise, please visit <https://www.abcam.cn/abpromise> or contact our technical team.

### Terms and conditions

---

- Guarantee only valid for products bought direct from Abcam or one of our authorized distributors