


Anti-P2Y13 antibody [EPR3698] ab108444

重组 RabMAb

4 References [2 图像](#)

概述

产品名称	Anti-P2Y13抗体[EPR3698]
描述	兔单克隆抗体[EPR3698] to P2Y13
宿主	Rabbit
经测试应用	适用于: WB 不适用于: Flow Cyt, ICC/IF, IHC-P or IP
种属反应性	与反应: Human 预测可用于: Mouse, Rat 
免疫原	Synthetic peptide. This information is proprietary to Abcam and/or its suppliers.
阳性对照	Human spleen tissue lysate, HeLa cell lysate, HepG2 cell lysate, Jurkat cell lysate.
常规说明	This product is a recombinant monoclonal antibody, which offers several advantages including: <ul style="list-style-type: none">- High batch-to-batch consistency and reproducibility- Improved sensitivity and specificity- Long-term security of supply- Animal-free production For more information see here . Our RabMAb [®] technology is a patented hybridoma-based technology for making rabbit monoclonal antibodies. For details on our patents, please refer to RabMAb[®] patents .

性能

形式	Liquid
存放说明	Shipped at 4°C. Store at -20°C. Stable for 12 months at -20°C.
存储溶液	pH: 7.20 Preservative: 0.05% Sodium azide Constituents: 0.1% BSA, 40% Glycerol (glycerin, glycerine), 9.85% Tris glycine, 50% Tissue culture supernatant
纯度	Tissue culture supernatant
克隆	单克隆
克隆编号	EPR3698

同种型

IgG

应用

The Abpromise guarantee **Abpromise™**承诺保证使用ab108444于以下的经测试应用

“应用说明”部分 下显示的仅为推荐的起始稀释度;实际最佳的稀释度/浓度应由使用者检定。

应用	Ab评论	说明
WB		1/1000 - 1/5000. Predicted molecular weight: 41 kDa.

应用说明

Is unsuitable for Flow Cyt, ICC/IF, IHC-P or IP.

靶标

功能

Receptor for ADP. Coupled to G(i)-proteins. May play a role in hematopoiesis and the immune system.

组织特异性

Strong expression in spleen and adult brain. Lower expression in placenta, lung, liver, spinal cord, thymus, small intestine, uterus, stomach, testis, fetal brain, and adrenal gland. Not detected in pancreas, heart, kidney, skeletal muscle, ovary or fetal aorta. Clearly detected in lymph node and bone marrow, weakly detected in peripheral blood mononuclear cells (PBMC) and in peripheral blood leukocytes (PBL), but not detected in polymorphonuclear cells (PMN). In the brain, detected in all brain regions examined.

序列相似性

Belongs to the G-protein coupled receptor 1 family.

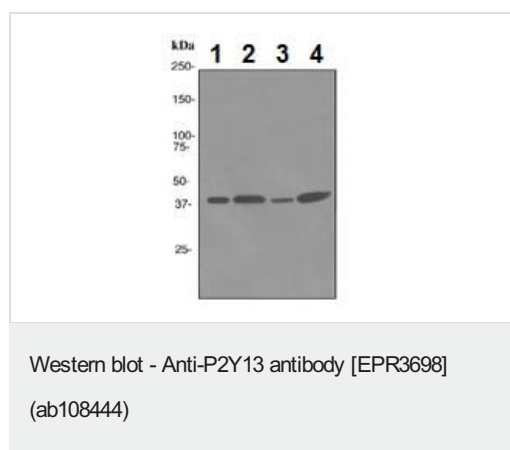
细胞定位

Cell membrane.

形式

There are 2 isoforms produced by alternative splicing.

图片



All lanes : Anti-P2Y13 antibody [EPR3698] (ab108444) at 1/1000 dilution

Lane 1 : Human spleen tissue lysate

Lane 2 : HeLa cell lysate

Lane 3 : HepG2 cell lysate

Lane 4 : Jurkat cell lysate

Lysates/proteins at 10 µg per lane.

Predicted band size: 41 kDa

Why choose a recombinant antibody?



Research with confidence
Consistent and reproducible results



Long-term and scalable supply
Recombinant technology



Success from the first experiment
Confirmed specificity



Ethical standards compliant
Animal-free production

Anti-P2Y13 antibody [EPR3698] (ab108444)

Please note: All products are "FOR RESEARCH USE ONLY. NOT FOR USE IN DIAGNOSTIC PROCEDURES"

Our Abpromise to you: Quality guaranteed and expert technical support

- Replacement or refund for products not performing as stated on the datasheet
- Valid for 12 months from date of delivery
- Response to your inquiry within 24 hours
- We provide support in Chinese, English, French, German, Japanese and Spanish
- Extensive multi-media technical resources to help you
- We investigate all quality concerns to ensure our products perform to the highest standards

If the product does not perform as described on this datasheet, we will offer a refund or replacement. For full details of the Abpromise, please visit <https://www.abcam.cn/abpromise> or contact our technical team.

Terms and conditions

- Guarantee only valid for products bought direct from Abcam or one of our authorized distributors