


Anti-p23 antibody [EPR3846] ab92503

敲除验证 重组 RabMAb

★★★★★ 1 Abreviews 5 References 4 图像

概述

产品名称	Anti-p23抗体[EPR3846]
描述	兔单克隆抗体[EPR3846] to p23
宿主	Rabbit
经测试应用	适用于: WB, ICC/IF 不适用于: Flow Cyt or IHC-P
种属反应性	与反应: Human 预测可用于: Mouse, Rat 
免疫原	Synthetic peptide within Human p23 aa 50-150. The exact sequence is proprietary.
阳性对照	WB: HEK-293T, HeLa, Human spleen, Jurkat and HepG2 cell lysates ICC/IF: HeLa cells
常规说明	This product is a recombinant monoclonal antibody, which offers several advantages including: - High batch-to-batch consistency and reproducibility - Improved sensitivity and specificity - Long-term security of supply - Animal-free production For more information see here . Our RabMAb [®] technology is a patented hybridoma-based technology for making rabbit monoclonal antibodies. For details on our patents, please refer to RabMAb[®] patents .

性能

形式	Liquid
存放说明	Shipped at 4°C. Store at -20°C. Stable for 12 months at -20°C.
存储溶液	pH: 7.20 Preservative: 0.05% Sodium azide Constituents: 0.1% BSA, 40% Glycerol (glycerin, glycerine), 9.85% Tris glycine, 50% Tissue culture supernatant
纯度	Protein A purified
克隆	单克隆
克隆编号	EPR3846

同种型IgG

应用

The Abpromise guarantee **Abpromise™**承诺保证使用ab92503于以下的经测试应用

“应用说明”部分 下显示的仅为推荐的起始稀释度;实际最佳的稀释度/浓度应由使用者检定。

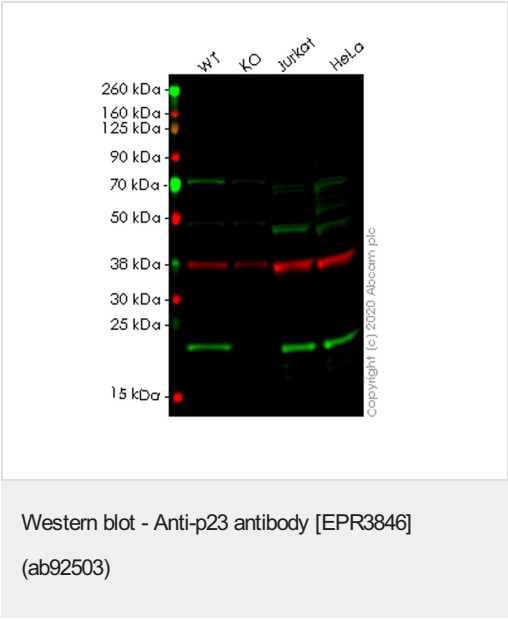
应用	Ab评论	说明
WB	★★★★★ (1)	1/10000 - 1/50000. Predicted molecular weight: 19 kDa.
ICC/IF		1/100 - 1/250.

应用说明 Is unsuitable for Flow Cyt or IHC-P.

靶标

功能	Molecular chaperone that localizes to genomic response elements in a hormone-dependent manner and disrupts receptor-mediated transcriptional activation, by promoting disassembly of transcriptional regulatory complexes.
通路	Lipid metabolism; prostaglandin biosynthesis.
序列相似性	Belongs to the p23/wos2 family. Contains 1 CS domain.
细胞定位	Cytoplasm.

图片



All lanes : Anti-p23 antibody [EPR3846] (ab92503) at 1/1000 dilution

Lane 1 : Wild-type HEK-293T (Human epithelial cell line from embryonic kidney transformed with large T antigen) whole cell lysate

Lane 2 : PTGES3 knockout HEK-293T (Human epithelial cell line from embryonic kidney transformed with large T antigen) whole cell lysate

Lane 3 : Jurkat (Human T cell leukemia cell line from peripheral blood) whole cell lysate

Lane 4 : HeLa (Human epithelial cell line from cervix adenocarcinoma) whole cell lysate

Lysates/proteins at 20 µg per lane.

Secondary

All lanes : Goat anti-Rabbit IgG H&L (IRDye® 800CW)

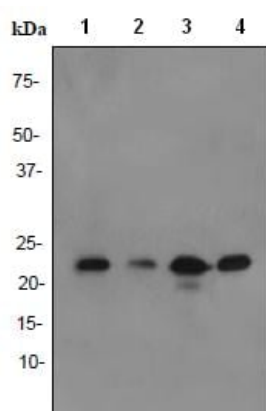
preadsorbed ([ab216773](#)) at 1/10000 dilution

Predicted band size: 19 kDa

Observed band size: 23 kDa

Lanes 1-4: Merged signal (red and green). Green - ab92503 observed at 23 kDa. Red - loading control [ab8245](#) observed at 36 kDa.

ab92503 Anti-p23 antibody [EPR3846] was shown to specifically react with p23 in wild-type HEK-293T cells. Loss of signal was observed when knockout cell line [ab266791](#) (knockout cell lysate [ab258151](#)) was used. Wild-type and p23 knockout samples were subjected to SDS-PAGE. ab92503 and Anti-GAPDH antibody [6C5] - Loading Control ([ab8245](#)) were incubated overnight at 4°C at 1 in 1000 dilution and 1 in 20000 dilution respectively. Blots were developed with Goat anti-Rabbit IgG H&L (IRDye® 800CW) preadsorbed ([ab216773](#)) and Goat anti-Mouse IgG H&L (IRDye® 680RD) preadsorbed ([ab216776](#)) secondary antibodies at 1 in 20000 dilution for 1 hour at room temperature before imaging.



Western blot - Anti-p23 antibody [EPR3846]
(ab92503)

All lanes : Anti-p23 antibody [EPR3846] (ab92503) at 1/10000 dilution

Lane 1 : HeLa cell lysate

Lane 2 : Human spleen lysate

Lane 3 : Jurkat cell lysate

Lane 4 : HepG2 cell lysate

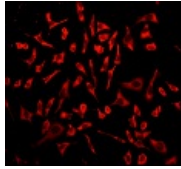
Lysates/proteins at 10 µg per lane.

Secondary

All lanes : HRP-labeled goat anti-rabbit at 1/2000 dilution

Predicted band size: 19 kDa

Observed band size: 23 kDa



Immunofluorescent staining of HeLa cells, using ab92503 at a dilution of 1/100.

Immunocytochemistry/ Immunofluorescence - Anti-p23 antibody [EPR3846] (ab92503)

Why choose a recombinant antibody?



Research with confidence
Consistent and reproducible results



Long-term and scalable supply
Recombinant technology



Success from the first experiment
Confirmed specificity



Ethical standards compliant
Animal-free production

Anti-p23 antibody [EPR3846] (ab92503)

Please note: All products are "FOR RESEARCH USE ONLY. NOT FOR USE IN DIAGNOSTIC PROCEDURES"

Our Abpromise to you: Quality guaranteed and expert technical support

- Replacement or refund for products not performing as stated on the datasheet
- Valid for 12 months from date of delivery
- Response to your inquiry within 24 hours
- We provide support in Chinese, English, French, German, Japanese and Spanish
- Extensive multi-media technical resources to help you
- We investigate all quality concerns to ensure our products perform to the highest standards

If the product does not perform as described on this datasheet, we will offer a refund or replacement. For full details of the Abpromise, please visit <https://www.abcam.cn/abpromise> or contact our technical team.

Terms and conditions

- Guarantee only valid for products bought direct from Abcam or one of our authorized distributors