

Anti-p23 antibody ab226295

5 图像

概述

产品名称	Anti-p23抗体
描述	兔多克隆抗体to p23
宿主	Rabbit
经测试应用	适用于: WB, IP, IHC-P
种属反应性	与反应: Mouse, Human 预测可用于: Rat, Chicken, Cow, Orangutan 
免疫原	Synthetic peptide within Human p23 aa 110-160. The exact sequence is proprietary. (NP_006592.3). Database link: Q15185
阳性对照	IHC-P: Human lung cancer and ovarian carcinoma tissues. Mouse teratoma tissue. WB: HeLa, HEK-293T, Jurkat, TCMK-1 and NIH/3T3 whole cell lysates. IP: HEK-293T whole cell lysate.
常规说明	<p>The Life Science industry has been in the grips of a reproducibility crisis for a number of years. Abcam is leading the way in addressing this with our range of recombinant monoclonal antibodies and knockout edited cell lines for gold-standard validation. Please check that this product meets your needs before purchasing.</p> <p>If you have any questions, special requirements or concerns, please send us an inquiry and/or contact our Support team ahead of purchase. Recommended alternatives for this product can be found below, along with publications, customer reviews and Q&As</p>

性能

形式	Liquid
存放说明	Shipped at 4°C. Store at +4°C short term (1-2 weeks). Upon delivery aliquot. Store at -20°C long term. Avoid freeze / thaw cycle.
存储溶液	pH: 7 Preservative: 0.09% Sodium azide Constituent: Tris citrate/phosphate
纯度	pH 7 to 8 Immunogen affinity purified
纯化说明	ab226295 was affinity purified using an epitope specific to p23 immobilized on solid support.

克隆 多克隆
同种型 IgG

应用

The Abpromise guarantee **Abpromise™**承诺保证使用ab226295于以下的经测试应用
“应用说明”部分 下显示的仅为推荐的起始稀释度;实际最佳的稀释度/浓度应由使用者检定。

应用	Ab评论	说明
WB		1/2000 - 1/1000. Predicted molecular weight: 19 kDa.
IP		Use at 2-10 µg/mg of lysate.
IHC-P		1/2000 - 1/10000.

靶标

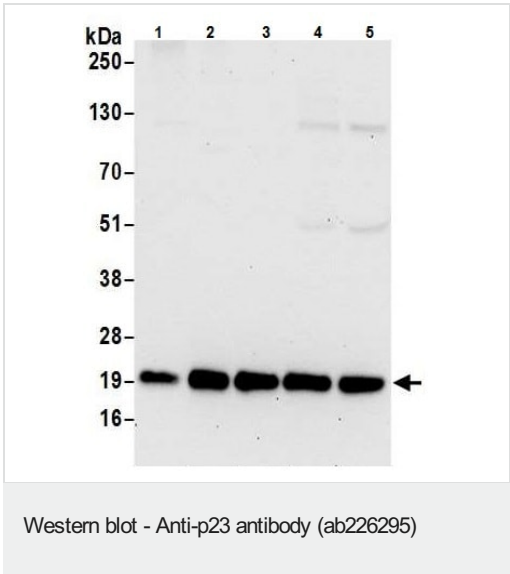
功能 Molecular chaperone that localizes to genomic response elements in a hormone-dependent manner and disrupts receptor-mediated transcriptional activation, by promoting disassembly of transcriptional regulatory complexes.

通路 Lipid metabolism; prostaglandin biosynthesis.

序列相似性 Belongs to the p23/wos2 family.
Contains 1 CS domain.

细胞定位 Cytoplasm.

图片



All lanes : Anti-p23 antibody (ab226295) at 0.1 µg/ml

Lane 1 : HeLa (human epithelial cell line from cervix adenocarcinoma) whole cell lysate

Lane 2 : HEK-293T (human epithelial cell line from embryonic kidney transformed with large T antigen) whole cell lysate

Lane 3 : Jurkat (human T cell leukemia cell line from peripheral blood) whole cell lysate

Lane 4 : TCMK-1 (mouse kidney epithelial cell line) whole cell lysate

Lane 5 : NIH/3T3 (mouse embryo fibroblast cell line) whole cell lysate

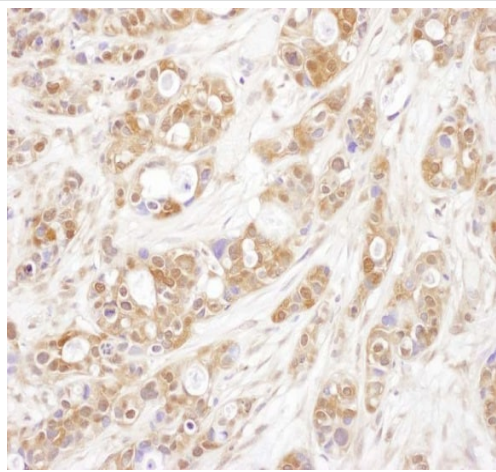
Lysates/proteins at 50 µg per lane.

Developed using the ECL technique.

Predicted band size: 19 kDa

Exposure time: 30 seconds

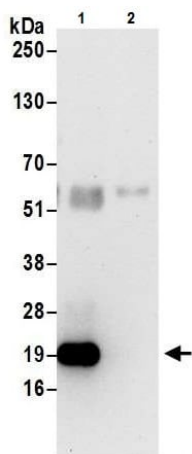
Cells prepared using NETN lysis buffer.



Immunohistochemistry (Formalin/PFA-fixed paraffin-embedded sections) - Anti-p23 antibody (ab226295)

Formalin-fixed, paraffin-embedded human ovarian carcinoma tissue stained for p23 using ab226295 at 1/5000 dilution in immunohistochemical analysis.

Detection: DAB staining.



Immunoprecipitation - Anti-p23 antibody (ab226295)

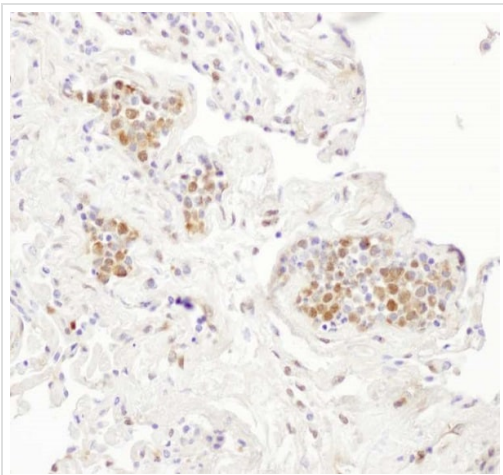
p23 was immunoprecipitated from HEK-293T (human epithelial epithelial cell line from embryonic kidney transformed with large T antigen) whole cell lysate (1 mg for IP, 20% of IP loaded) with ab226295 at 6 µg per reaction. Western blot was performed from the immunoprecipitate using ab226295 at 1 µg/ml.

Lane 1: ab226295 IP in HEK-293T whole cell lysate.

Lane 2: Control IgG IP in HEK-293T whole cell lysate.

Detection: Chemiluminescence with exposure time of 30 seconds.

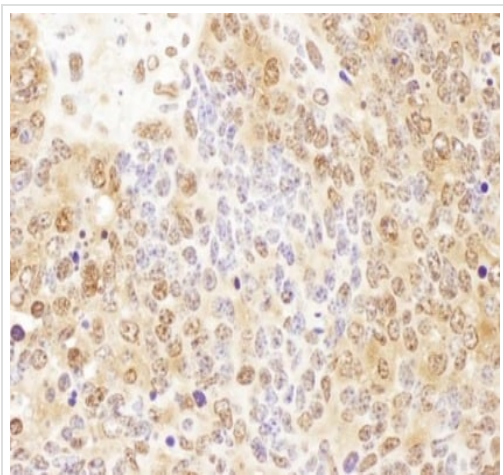
Cells prepared using NETN lysis buffer.



Immunohistochemistry (Formalin/PFA-fixed paraffin-embedded sections) - Anti-p23 antibody (ab226295)

Formalin-fixed, paraffin-embedded human lung cancer tissue stained for p23 using ab226295 at 1/5000 dilution in immunohistochemical analysis.

Detection: DAB staining.



Immunohistochemistry (Formalin/PFA-fixed paraffin-embedded sections) - Anti-p23 antibody (ab226295)

Formalin-fixed, paraffin-embedded mouse teratoma tissue stained for p23 using ab226295 at 1/1000 dilution in immunohistochemical analysis.

Detection: DAB staining.

Please note: All products are "FOR RESEARCH USE ONLY. NOT FOR USE IN DIAGNOSTIC PROCEDURES"

Our Abpromise to you: Quality guaranteed and expert technical support

- Replacement or refund for products not performing as stated on the datasheet
- Valid for 12 months from date of delivery
- Response to your inquiry within 24 hours

- We provide support in Chinese, English, French, German, Japanese and Spanish
- Extensive multi-media technical resources to help you
- We investigate all quality concerns to ensure our products perform to the highest standards

If the product does not perform as described on this datasheet, we will offer a refund or replacement. For full details of the Abpromise, please visit <https://www.abcam.cn/abpromise> or contact our technical team.

Terms and conditions

- Guarantee only valid for products bought direct from Abcam or one of our authorized distributors