


Anti-p21-ARC/ARPC3 antibody ab37916

★★★★★ [1 Abreviews](#) [2 References](#) [1 图像](#)

概述

| | |
|-------|---|
| 产品名称 | Anti-p21-ARC/ARPC3抗体 |
| 描述 | 山羊多克隆抗体to p21-ARC/ARPC3 |
| 宿主 | Goat |
| 经测试应用 | 适用于: WB |
| 种属反应性 | 与反应: Mouse 预测可用于: Rat, Cow, Xenopus laevis, Zebrafish  |
| 免疫原 | Synthetic peptide. This information is proprietary to Abcam and/or its suppliers. |
| 阳性对照 | WB: Hela, Human Brain and Mouse Brain lysates. |
| 常规说明 | <p>The Life Science industry has been in the grips of a reproducibility crisis for a number of years. Abcam is leading the way in addressing this with our range of recombinant monoclonal antibodies and knockout edited cell lines for gold-standard validation. Please check that this product meets your needs before purchasing.</p> <p>If you have any questions, special requirements or concerns, please send us an inquiry and/or contact our Support team ahead of purchase. Recommended alternatives for this product can be found below, along with publications, customer reviews and Q&As</p> |

性能

| | |
|------|---|
| 形式 | Liquid |
| 存放说明 | Shipped at 4°C. Upon delivery aliquot and store at -20°C. Avoid freeze / thaw cycles. |
| 存储溶液 | pH: 7.30 Preservative: 0.02% Sodium azide Constituent: 0.5% BSA |
| 纯度 | Immunogen affinity purified |
| 纯化说明 | This antibody was purified from goat serum by ammonium sulphate precipitation followed by antigen affinity chromatography using the immunizing peptide. |
| 克隆 | 多克隆 |
| 同种型 | IgG |

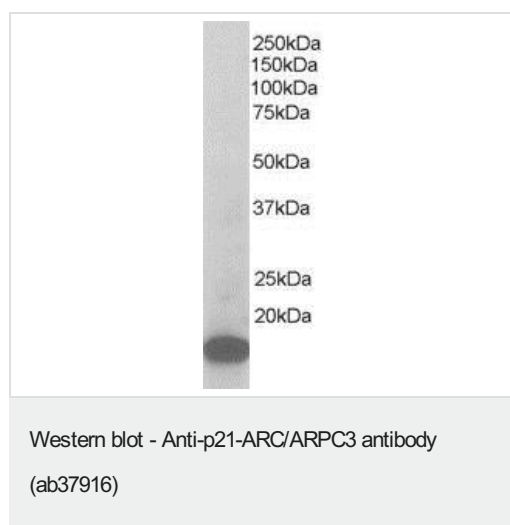
The Abpromise guarantee **Abpromise™**承诺保证使用ab37916于以下的经测试应用

“应用说明”部分 下显示的仅为推荐的起始稀释度;实际最佳的稀释度/浓度应由使用者检定。

| 应用 | Ab评论 | 说明 |
|----|-----------|---|
| WB | ★★★★★ (1) | Use a concentration of 1 - 3 µg/ml. Detects a band of approximately 20 kDa (predicted molecular weight: 20 kDa). 1 hour primary incubation is recommended for this product. |

靶标

| | |
|--------------|---|
| 功能 | Functions as component of the Arp2/3 complex which is involved in regulation of actin polymerization and together with an activating nucleation-promoting factor (NPF) mediates the formation of branched actin networks. |
| 序列相似性 | Belongs to the ARPC3 family. |
| 细胞定位 | Cytoplasm, cytoskeleton. Cell projection. |

图片

Anti-p21-ARC/ARPC3 antibody (ab37916) at 1 µg/ml + Mouse Brain lysate (RIPA buffer 35µg total protein per lane).

Predicted band size: 20 kDa

Primary incubated for 1 hour. Detected by western blot using chemiluminescence.

Please note: All products are "FOR RESEARCH USE ONLY. NOT FOR USE IN DIAGNOSTIC PROCEDURES"

Our Abpromise to you: Quality guaranteed and expert technical support

- Replacement or refund for products not performing as stated on the datasheet
- Valid for 12 months from date of delivery
- Response to your inquiry within 24 hours
- We provide support in Chinese, English, French, German, Japanese and Spanish
- Extensive multi-media technical resources to help you
- We investigate all quality concerns to ensure our products perform to the highest standards

If the product does not perform as described on this datasheet, we will offer a refund or replacement. For full details of the Abpromise, please visit <https://www.abcam.cn/abpromise> or contact our technical team.

Terms and conditions

- Guarantee only valid for products bought direct from Abcam or one of our authorized distributors