

Anti-Osteopontin antibody ab8448

★★★★★ [14 Abreviews](#) [406 References](#) [3 图像](#)

概述

产品名称	Anti-Osteopontin抗体
描述	兔多克隆抗体to Osteopontin
宿主	Rabbit
经测试应用	适用于: IHC-P, ICC/IF 不适用于: WB
种属反应性	与反应: Human
免疫原	Synthetic peptide corresponding to Human Osteopontin aa 170-183 conjugated to keyhole limpet haemocyanin. Sequence: CKSKKFRRPDIQYPD
	Database link: P10451 (Peptide available as ab9078)

 [Run BLAST with](#)

 [Run BLAST with](#)

常规说明

The Life Science industry has been in the grips of a reproducibility crisis for a number of years. Abcam is leading the way in addressing this with our range of recombinant monoclonal antibodies and knockout edited cell lines for gold-standard validation. Please check that this product meets your needs before purchasing.

If you have any questions, special requirements or concerns, please send us an inquiry and/or contact our Support team ahead of purchase. Recommended alternatives for this product can be found below, along with publications, customer reviews and Q&As

性能

形式	Liquid
存放说明	Shipped at 4°C. Upon delivery aliquot and store at -20°C or -80°C. Avoid repeated freeze / thaw cycles.
存储溶液	Preservative: 0.1% Sodium azide Constituents: 0.42% Potassium phosphate, 0.87% Sodium chloride
纯度	Whole antiserum
克隆	多克隆

同种型IgG

应用

The Abpromise guarantee **Abpromise™**承诺保证使用ab8448于以下的经测试应用
“应用说明”部分 下显示的仅为推荐的起始稀释度;实际最佳的稀释度/浓度应由使用者检定。

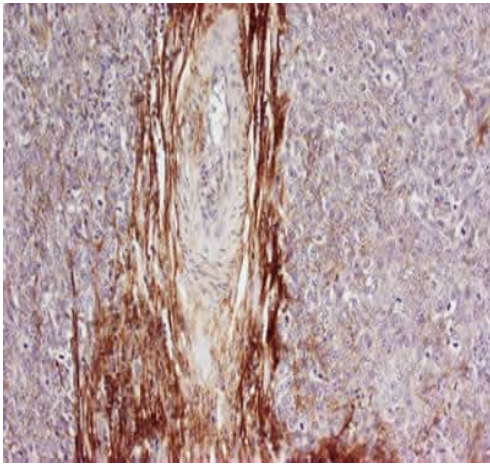
应用	Ab评论	说明
IHC-P	★★★★★ (6)	1/100 - 1/300.
ICC/IF		1/1000.

应用说明 Is unsuitable for WB.

靶标

功能	Binds tightly to hydroxyapatite. Appears to form an integral part of the mineralized matrix. Probably important to cell-matrix interaction. Acts as a cytokine involved in enhancing production of interferon-gamma and interleukin-12 and reducing production of interleukin-10 and is essential in the pathway that leads to type I immunity.
组织特异性	Bone. Found in plasma.
序列相似性	Belongs to the osteopontin family.
翻译后修饰	Extensively phosphorylated on clustered serine residues. N- and O-glycosylated. Phosphorylation sites are present in the extracellular medium.
细胞定位	Secreted.

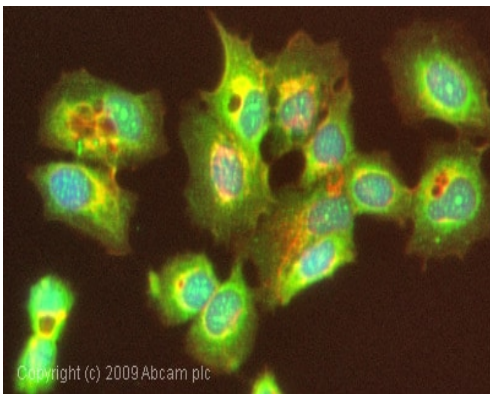
图片



Immunohistochemistry (Formalin/PFA-fixed paraffin-embedded sections) - Anti-Osteopontin antibody (ab8448)

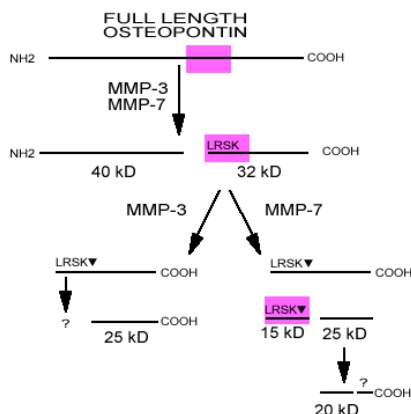
Human Breast tumour section. Osteopontin is a normal component of elastic fibers in the breast (shown heavily stained in this section). There is also weak staining of the extracellular matrix. Osteopontin is not believed to be expressed inside breast tumour cells, and there is no staining in the intracellular region of the breast cells in this section.

Osteopontin antibody (ab8448) used at 1:100-1:300. No antigen retrieval is required.



Immunocytochemistry/ Immunofluorescence - Anti-Osteopontin antibody (ab8448)

ICC/IF image of ab8448 stained MCF7 cells. The cells were 4% PFA fixed (10 min) and then incubated in 1%BSA / 10% normal goat serum / 0.3M glycine in 0.1% PBS-Tween for 1h to permeabilise the cells and block non-specific protein-protein interactions. The cells were then incubated with the antibody (ab8448, 1/1000 dilution) overnight at +4°C. The secondary antibody (green) was Alexa Fluor® 488 goat anti-rabbit IgG (H+L) used at a 1/1000 dilution for 1h. Alexa Fluor® 594 WGA was used to label plasma membranes (red) at a 1/200 dilution for 1h. DAPI was used to stain the cell nuclei (blue) at a concentration of 1.43µM.



Schematic Diagram - Anti-Osteopontin antibody (ab8448)

This image is courtesy of Agnihotri et al, JBC 2001

OPN is cleaved by MMP to yield 2 fragments, which migrate at 40kD(N terminal) and 32kD (C terminal). The C terminal fragment can undergo further cleavage by both of these MMPs (see Agnihotri et al, JBC 2001 for further details). The epitope recognised by ab8448 is shown in violet. This antibody detects the full length OPN and the 32kD fragment. It does not recognise the 40kD fragment.

Please note: All products are "FOR RESEARCH USE ONLY. NOT FOR USE IN DIAGNOSTIC PROCEDURES"

Our Abpromise to you: Quality guaranteed and expert technical support

- Replacement or refund for products not performing as stated on the datasheet
- Valid for 12 months from date of delivery
- Response to your inquiry within 24 hours

- We provide support in Chinese, English, French, German, Japanese and Spanish
- Extensive multi-media technical resources to help you
- We investigate all quality concerns to ensure our products perform to the highest standards

If the product does not perform as described on this datasheet, we will offer a refund or replacement. For full details of the Abpromise, please visit <https://www.abcam.cn/abpromise> or contact our technical team.

Terms and conditions

- Guarantee only valid for products bought direct from Abcam or one of our authorized distributors