

Anti-OspB antibody ab106082

1 图像

概述

产品名称	Anti-OspB抗体
描述	兔多克隆抗体to OspB
宿主	Rabbit
经测试应用	适用于: WB
种属反应性	与反应: <i>Borrelia burgdorferi</i>
免疫原	Fusion protein corresponding to OspB. Database link: P17739
阳性对照	<i>Borrelia burgdorferi</i> ospB protein.
常规说明	<p>The Life Science industry has been in the grips of a reproducibility crisis for a number of years. Abcam is leading the way in addressing this with our range of recombinant monoclonal antibodies and knockout edited cell lines for gold-standard validation. Please check that this product meets your needs before purchasing.</p> <p>If you have any questions, special requirements or concerns, please send us an inquiry and/or contact our Support team ahead of purchase. Recommended alternatives for this product can be found below, along with publications, customer reviews and Q&As</p>

性能

形式	Liquid
存放说明	Shipped at 4°C. Upon delivery aliquot. Store at -20°C or -80°C. Avoid freeze / thaw cycle.
存储溶液	Preservative: 0.01% Sodium azide Constituents: 0.42% Potassium phosphate, 0.88% Sodium chloride
纯度	Protein A purified
纯化说明	ab106082 is cross-adsorbed against MBP from monospecific antiserum by chromatography.
克隆	多克隆
同种型	IgG

应用

The Abpromise guarantee

Abpromise™ 承诺保证使用ab106082于以下的经测试应用

“应用说明”部分 下显示的仅为推荐的起始稀释度;实际最佳的稀释度/浓度应由使用者检定。

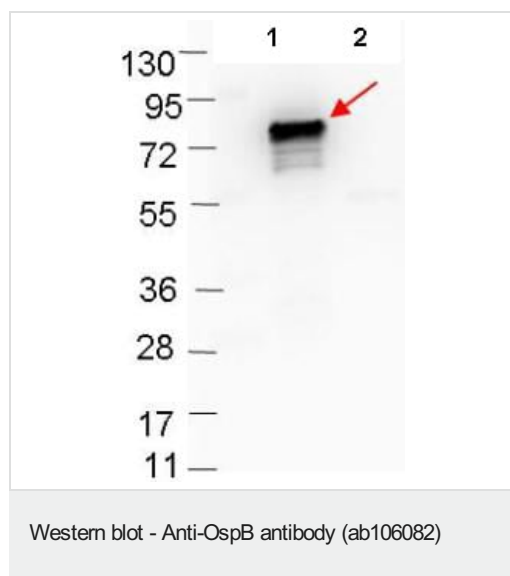
应用	Ab评论	说明
WB		1/1000. Predicted molecular weight: 32 kDa.

靶标

相关性 OspB, is one of the major Outer Surface Proteins of the outer membrane of *Borrelia burgdorferi*, which is composed of various unique outer surface proteins (Osp) that have been characterized (OspA through OspF). The osp proteins are lipoproteins anchored by N-terminally attached fatty acid molecules to the membrane. They are presumed to play a role in virulence, transmission, or survival in the tick. Two of the major surface Ag of *Borrelia burgdorferi*, the 31-kDa OspA and 34-kDa OspB proteins, show a high degree of sequence similarity, are encoded by a 49-kb plasmid and share a common promoter, and are coordinately transcribed.

细胞定位 Cell outer membrane; Lipid-anchor.

图片



All lanes : Anti-OspB antibody (ab106082) at 1/1000 dilution

Lane 1 : MBP-OspB fusion protein

Lane 2 : MBP alone

Lysates/proteins at 0.1 µg per lane.

Secondary

All lanes : Goat-anti-Rabbit HRP at 1/40000 dilution

Predicted band size: 32 kDa

4-20% gel.

Please note: All products are "FOR RESEARCH USE ONLY. NOT FOR USE IN DIAGNOSTIC PROCEDURES"

Our Abpromise to you: Quality guaranteed and expert technical support

- Replacement or refund for products not performing as stated on the datasheet
- Valid for 12 months from date of delivery
- Response to your inquiry within 24 hours
- We provide support in Chinese, English, French, German, Japanese and Spanish

- Extensive multi-media technical resources to help you
- We investigate all quality concerns to ensure our products perform to the highest standards

If the product does not perform as described on this datasheet, we will offer a refund or replacement. For full details of the Abpromise, please visit <https://www.abcam.cn/abpromise> or contact our technical team.

Terms and conditions

- Guarantee only valid for products bought direct from Abcam or one of our authorized distributors