

Anti-ospA antibody ab106081

1 图像

概述

产品名称	Anti-ospA抗体
描述	兔多克隆抗体to ospA
宿主	Rabbit
经测试应用	适用于: WB
种属反应性	与反应: <i>Borrelia burgdorferi</i>
免疫原	Fusion protein corresponding to ospA. Database link: P0CL66
阳性对照	<i>Borrelia burgdorferi</i> recombinant ospA protein.
常规说明	<p>The Life Science industry has been in the grips of a reproducibility crisis for a number of years. Abcam is leading the way in addressing this with our range of recombinant monoclonal antibodies and knockout edited cell lines for gold-standard validation. Please check that this product meets your needs before purchasing.</p> <p>If you have any questions, special requirements or concerns, please send us an inquiry and/or contact our Support team ahead of purchase. Recommended alternatives for this product can be found below, along with publications, customer reviews and Q&As</p>

性能

形式	Liquid
存放说明	Shipped at 4°C. Store at +4°C short term (1-2 weeks). Upon delivery aliquot. Store at -20°C or -80°C. Avoid freeze / thaw cycle.
存储溶液	Preservative: 0.01% Sodium azide Constituents: 0.42% Potassium phosphate, 0.88% Sodium chloride
纯度	Protein A purified
纯化说明	ab106081 is cross-adsorbed against MBP from monospecific antiserum by chromatography.
克隆	多克隆
同种型	IgG

应用

The Abpromise guarantee

Abpromise™ 承诺保证使用ab106081于以下的经测试应用

“应用说明”部分 下显示的仅为推荐的起始稀释度;实际最佳的稀释度/浓度应由使用者检定。

应用	Ab评论	说明
WB		1/1000. Predicted molecular weight: 29 kDa.

靶标

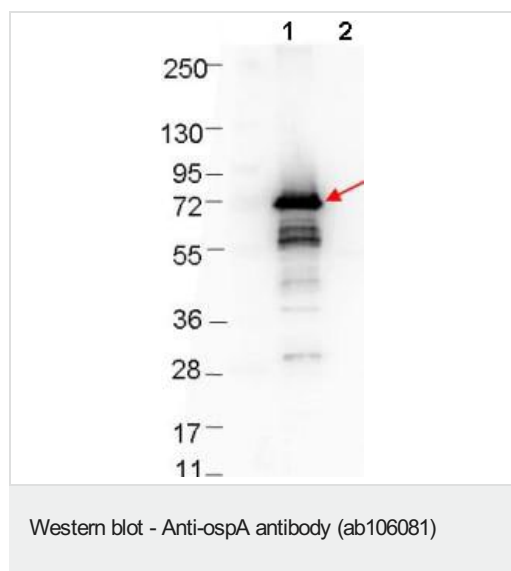
相关性

Outer-Surface Protein A (OspA), a lipoprotein from *Borrelia burgdorferi* encoded on its Plasmid lp54, is a major component of the spirochete's extracellular matrix. OspA probably serves as a lipid-anchor. The spirochetes migrate from the tick midgut during feeding to its salivary glands and are thus transmitted to the mammal host. This transition may be facilitated by changes in expression of some *B. burgdorferi* genes. Upon transmission of the spirochete from the Ixodes tick to mammalian host, the transcript level of OspA can change. It is believed that expression of the various proteins associated with the spirochete may be regulated by the changes in tick life cycle, changes in conditions during tick feeding (such as temperature, pH, and nutrients) and/or in coordination with the course of infection of the mammal host. *B. burgdorferi* can attach to (and also differentially express antigens in) diverse tissues within the vertebrate host and the tick vector, suggesting that physiological factors other than pH and temperature may play roles in modulating *B. burgdorferi* gene expression.

细胞定位

Cell outer membrane; Lipid-anchor.

图片



All lanes : Anti-ospA antibody (ab106081) at 1/1000 dilution

Lane 1 : MBP-ospA fusion protein

Lane 2 : MBP alone

Lysates/proteins at 0.1 µg per lane.

Secondary

All lanes : Goat-anti-Rabbit HRP at 1/40000 dilution

Predicted band size: 29 kDa

Please note: All products are "FOR RESEARCH USE ONLY. NOT FOR USE IN DIAGNOSTIC PROCEDURES"

Our Abpromise to you: Quality guaranteed and expert technical support

- Replacement or refund for products not performing as stated on the datasheet
- Valid for 12 months from date of delivery

- Response to your inquiry within 24 hours
- We provide support in Chinese, English, French, German, Japanese and Spanish
- Extensive multi-media technical resources to help you
- We investigate all quality concerns to ensure our products perform to the highest standards

If the product does not perform as described on this datasheet, we will offer a refund or replacement. For full details of the Abpromise, please visit <https://www.abcam.cn/abpromise> or contact our technical team.

Terms and conditions

- Guarantee only valid for products bought direct from Abcam or one of our authorized distributors