

# Anti-Orexin Receptor 1 and 2 antibody ab77370

[1 References](#) [1 图像](#)

### 概述

---

<b>产品名称</b>	Anti-Orexin Receptor 1 and 2抗体
<b>描述</b>	山羊多克隆抗体to Orexin Receptor 1 and 2
<b>宿主</b>	Goat
<b>经测试应用</b>	<b>适用于:</b> WB
<b>种属反应性</b>	<b>与反应:</b> Human <b>预测可用于:</b> Chicken, Cow, Dog, Pig, Zebrafish 
<b>免疫原</b>	Synthetic peptide. This information is proprietary to Abcam and/or its suppliers.
<b>常规说明</b>	<p>The Life Science industry has been in the grips of a reproducibility crisis for a number of years. Abcam is leading the way in addressing this with our range of recombinant monoclonal antibodies and knockout edited cell lines for gold-standard validation. Please check that this product meets your needs before purchasing.</p> <p>If you have any questions, special requirements or concerns, please send us an inquiry and/or contact our Support team ahead of purchase. Recommended alternatives for this product can be found below, along with publications, customer reviews and Q&amp;As</p>

### 性能

---

<b>形式</b>	Liquid
<b>存放说明</b>	Shipped at 4°C. Store at +4°C short term (1-2 weeks). Upon delivery aliquot. Store at -20°C or -80°C. Avoid freeze / thaw cycle.
<b>存储溶液</b>	pH: 7.30 Preservative: 0.02% Sodium azide Constituents: 0.5% BSA, Tris buffered saline
<b>纯度</b>	Immunogen affinity purified
<b>纯化说明</b>	Purified from goat serum by ammonium sulphate precipitation followed by antigen affinity chromatography using the immunizing peptide.
<b>克隆</b>	多克隆
<b>同种型</b>	IgG

### 应用

## The Abpromise guarantee

**Abpromise™** 承诺保证使用 ab77370 于以下的经测试应用

“应用说明”部分下显示的仅为推荐的起始稀释度；实际最佳的稀释度/浓度应由使用者检定。

应用	Ab评论	说明
WB		Use a concentration of 0.3 - 1 µg/ml. Detects a band of approximately 49 kDa (predicted molecular weight: 49 kDa). 1 hour primary incubation is recommended for this product.

## 靶标

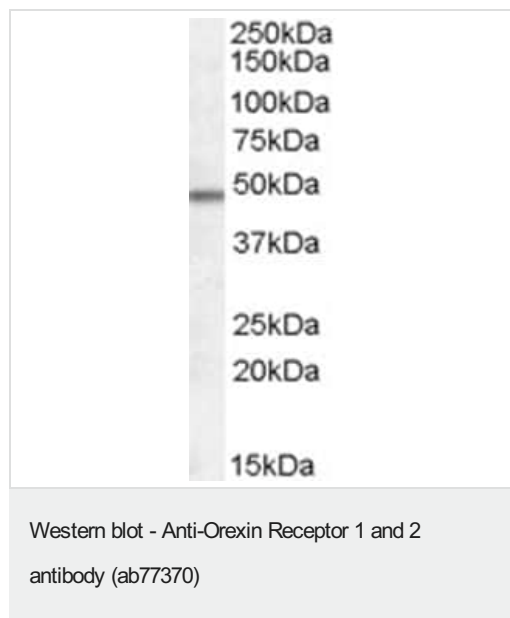
### 相关性

Orexins, also called hypocretins, are the common names given to a pair of highly excitatory neuropeptide hormones that were simultaneously discovered by two groups of researchers in rat brains. The two highly related peptides (orexin A and B, or hypocretin 1 and 2) are produced by cleavage of a single precursor protein. Studies suggest that orexin A/hypocretin 1 may be of greater biological importance than orexin B/hypocretin 2. Although these peptides are produced by a very small population of cells in the lateral and posterior hypothalamus, they send projections throughout the brain. The orexins/hypocretins are strongly conserved peptides, found in all major classes of vertebrates. The peptides are thought to have arisen early in vertebrate evolution.

### 细胞定位

Membrane; multi pass membrane protein.

## 图片



Anti-Orexin Receptor 1 and 2 antibody (ab77370) at 0.5 µg/ml + human frontal cortex lysate in RIPA buffer at 35 µg

Developed using the ECL technique.

**Predicted band size:** 49 kDa

**Observed band size:** 49 kDa

**Please note:** All products are "FOR RESEARCH USE ONLY. NOT FOR USE IN DIAGNOSTIC PROCEDURES"

## Our Abpromise to you: Quality guaranteed and expert technical support

- Replacement or refund for products not performing as stated on the datasheet

- Valid for 12 months from date of delivery
- Response to your inquiry within 24 hours
  
- We provide support in Chinese, English, French, German, Japanese and Spanish
- Extensive multi-media technical resources to help you
- We investigate all quality concerns to ensure our products perform to the highest standards

If the product does not perform as described on this datasheet, we will offer a refund or replacement. For full details of the Abpromise, please visit <https://www.abcam.cn/abpromise> or contact our technical team.

### **Terms and conditions**

---

- Guarantee only valid for products bought direct from Abcam or one of our authorized distributors