

Anti-OPN3 antibody ab75285

[12 References](#) [2 图像](#)

概述

产品名称	Anti-OPN3抗体
描述	兔多克隆抗体to OPN3
宿主	Rabbit
经测试应用	适用于: ELISA, WB, ICC/IF
种属反应性	与反应: Mouse, Human
免疫原	Synthetic peptide corresponding to Human OPN3 (internal sequence).
阳性对照	WB: Extracts from mouse brain cells. ICC/IF: MCF-7 cells.
常规说明	<p>The Life Science industry has been in the grips of a reproducibility crisis for a number of years. Abcam is leading the way in addressing this with our range of recombinant monoclonal antibodies and knockout edited cell lines for gold-standard validation. Please check that this product meets your needs before purchasing.</p> <p>If you have any questions, special requirements or concerns, please send us an inquiry and/or contact our Support team ahead of purchase. Recommended alternatives for this product can be found below, along with publications, customer reviews and Q&As</p>

性能

形式	Liquid
存放说明	Shipped at 4°C. Upon delivery aliquot and store at -20°C. Avoid repeated freeze / thaw cycles.
存储溶液	pH: 7.40 Preservative: 0.02% Sodium azide Constituents: 0.87% Sodium chloride, 50% Glycerol (glycerin, glycerine), PBS
纯度	Immunogen affinity purified
纯化说明	The antibody was affinity purified from rabbit antiserum by affinity chromatography
克隆	多克隆
同种型	IgG

应用

The Abpromise guarantee

Abpromise™ 承诺保证使用ab75285于以下的经测试应用

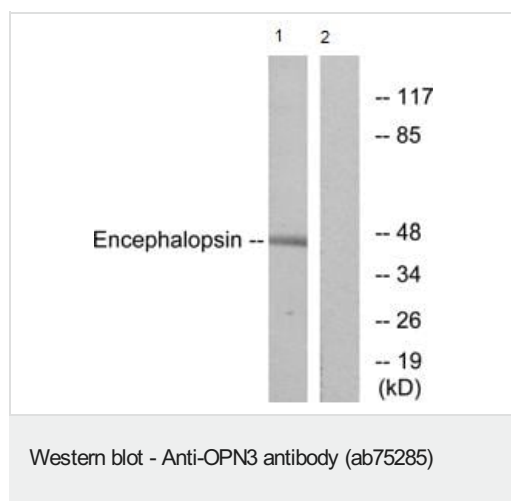
“应用说明”部分 下显示的仅为推荐的起始稀释度;实际最佳的稀释度/浓度应由使用者检定。

应用	Ab评论	说明
ELISA		Use at an assay dependent concentration.
WB		1/500 - 1/1000. Predicted molecular weight: 45 kDa.
ICC/IF		1/500 - 1/1000.

靶标

功能	May play a role in encephalic photoreception.
组织特异性	Strongly expressed in brain. Highly expressed in the preoptic area and paraventricular nucleus of the hypothalamus. Shows highly patterned expression in other regions of the brain, being enriched in selected regions of the cerebral cortex, cerebellar Purkinje cells, a subset of striatal neurons, selected thalamic nuclei, and a subset of interneurons in the ventral horn of the spinal cord.
序列相似性	Belongs to the G-protein coupled receptor 1 family. Opsin subfamily.
细胞定位	Membrane.

图片



All lanes : Anti-OPN3 antibody (ab75285) at 1/500 dilution

Lane 1 : Extracts from mouse brain cells

Lane 2 : Extracts from mouse brain cells with immunising peptide at 10 µg

Lysates/proteins at 10 µg per lane.

Predicted band size: 45 kDa

Observed band size: 45 kDa



ab75285 staining OPN3 in MCF-7 cells by Immunofluorescence.
Image on right when blocking peptide added.

Please note: All products are "FOR RESEARCH USE ONLY. NOT FOR USE IN DIAGNOSTIC PROCEDURES"

Our Abpromise to you: Quality guaranteed and expert technical support

- Replacement or refund for products not performing as stated on the datasheet
- Valid for 12 months from date of delivery
- Response to your inquiry within 24 hours
- We provide support in Chinese, English, French, German, Japanese and Spanish
- Extensive multi-media technical resources to help you
- We investigate all quality concerns to ensure our products perform to the highest standards

If the product does not perform as described on this datasheet, we will offer a refund or replacement. For full details of the Abpromise, please visit <https://www.abcam.cn/abpromise> or contact our technical team.

Terms and conditions

- Guarantee only valid for products bought direct from Abcam or one of our authorized distributors