


Anti-Oligodendrocyte Specific Protein antibody - Oligodendrocyte Marker ab53041

★★★★★ [21 Abreviews](#) [70 References](#) [1 图像](#)

概述

产品名称	Anti-Oligodendrocyte Specific蛋白抗体- Oligodendrocyte Marker
描述	兔多克隆抗体to Oligodendrocyte Specific蛋白- Oligodendrocyte Marker
宿主	Rabbit
特异性	Whilst ab53041 has been generated using synthetic peptide corresponding to human Oligodendrocyte protein (C-terminal), the antibody has only been validated for use in mouse. Detects endogenous levels of total Oligodendrocyte Specific Protein.
经测试应用	适用于: ICC, WB
种属反应性	与反应: Mouse, Rat 预测可用于: Human 
免疫原	Synthetic peptide corresponding to Human Oligodendrocyte Specific Protein (C terminal). Database link: O75508
阳性对照	WB: Mouse brain extract.
常规说明	<p>The Life Science industry has been in the grips of a reproducibility crisis for a number of years. Abcam is leading the way in addressing this with our range of recombinant monoclonal antibodies and knockout edited cell lines for gold-standard validation. Please check that this product meets your needs before purchasing.</p> <p>If you have any questions, special requirements or concerns, please send us an inquiry and/or contact our Support team ahead of purchase. Recommended alternatives for this product can be found below, along with publications, customer reviews and Q&As</p>

性能

形式	Liquid
存放说明	Shipped at 4°C. Upon delivery aliquot and store at -20°C. Avoid freeze / thaw cycles.
存储溶液	pH: 7 Preservative: 0.02% Sodium azide Constituents: 50% Glycerol, 0.87% Sodium chloride, PBS Without Mg+2 and Ca+2

纯度	Immunogen affinity purified
克隆	多克隆
同种型	IgG

应用

The Abpromise guarantee **Abpromise™**承诺保证使用ab53041于以下的经测试应用

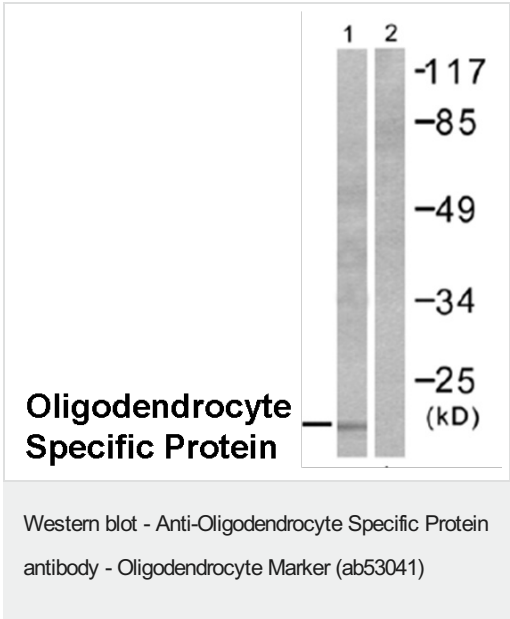
“应用说明”部分 下显示的仅为推荐的起始稀释度;实际最佳的稀释度/浓度应由使用者检定。

应用	Ab评论	说明
ICC	★★★★★ (1)	1/200.
WB	★☆☆☆☆ (1)	1/500 - 1/1000. Detects a band of approximately 22 kDa (predicted molecular weight: 22 kDa).

靶标

功能	Plays a major role in tight junction-specific obliteration of the intercellular space, through calcium-independent cell-adhesion activity.
序列相似性	Belongs to the claudin family.
细胞定位	Cell junction > tight junction. Cell membrane.

图片



All lanes : Anti-Oligodendrocyte Specific Protein antibody - Oligodendrocyte Marker (ab53041) at 1/500 dilution

Lane 1 : Mouse brain extract

Lane 2 : Mouse brain extract with peptide

Predicted band size: 22 kDa

Observed band size: 22 kDa

Secondary antibody - **anti-rabbit HRP (ab6721)**

Please note: All products are "FOR RESEARCH USE ONLY. NOT FOR USE IN DIAGNOSTIC PROCEDURES"

Our Abpromise to you: Quality guaranteed and expert technical support

- Replacement or refund for products not performing as stated on the datasheet
- Valid for 12 months from date of delivery
- Response to your inquiry within 24 hours

- We provide support in Chinese, English, French, German, Japanese and Spanish
- Extensive multi-media technical resources to help you
- We investigate all quality concerns to ensure our products perform to the highest standards

If the product does not perform as described on this datasheet, we will offer a refund or replacement. For full details of the Abpromise, please visit <https://www.abcam.cn/abpromise> or contact our technical team.

Terms and conditions

- Guarantee only valid for products bought direct from Abcam or one of our authorized distributors