


Anti-OLFM4 antibody ab105861

★ ★ ★ ★ ★ [2 Abreviews](#) [1 References](#) [2 图像](#)

概述

产品名称	Anti-OLFM4抗体
描述	兔多克隆抗体to OLFM4
宿主	Rabbit
经测试应用	适用于: IHC-P, WB
种属反应性	与反应: Human 预测可用于: Mouse, Rat, Cow, Dog, Chimpanzee, Monkey 
免疫原	Synthetic peptide corresponding to a region within internal sequence amino acids 400-450 (ASTGNMVISK LNDTTLQVLN TWYTKQYKPS ASNAFMVCGV LYATRTMNTR T) of Human OLFM4, conjugated to KLH. Run BLAST with ExPASy Run BLAST with NCBI
阳性对照	Human liver lysate
常规说明	<p>The Life Science industry has been in the grips of a reproducibility crisis for a number of years. Abcam is leading the way in addressing this with our range of recombinant monoclonal antibodies and knockout edited cell lines for gold-standard validation. Please check that this product meets your needs before purchasing.</p> <p>If you have any questions, special requirements or concerns, please send us an inquiry and/or contact our Support team ahead of purchase. Recommended alternatives for this product can be found below, along with publications, customer reviews and Q&As</p>

性能

形式	Liquid
存放说明	Shipped at 4°C. Store at +4°C short term (1-2 weeks). Upon delivery aliquot. Store at -20°C long term.
存储溶液	Preservative: 0.05% Sodium azide Constituents: 0.05% BSA, PBS
纯度	Immunogen affinity purified
克隆	多克隆
同种型	IgG

应用

The Abpromise guarantee **Abpromise™**承诺保证使用ab105861于以下的经测试应用

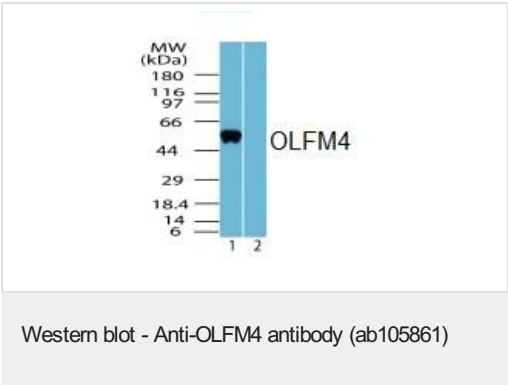
“应用说明”部分 下显示的仅为推荐的起始稀释度;实际最佳的稀释度/浓度应由使用者检定。

应用	Ab评论	说明
IHC-P		Use a concentration of 5 µg/ml. Perform heat mediated antigen retrieval with citrate buffer pH 6 before commencing with IHC staining protocol.
WB		Use a concentration of 0.5 - 2 µg/ml. Predicted molecular weight: 57 kDa.

靶标

功能	An antiapoptotic factor that promotes tumor growth. Promotes proliferation of pancreatic cancer cells by favoring the transition from the S to G2/M phase. Facilitates cell adhesion.
组织特异性	Expressed during myeloid lineage development. Strongly expressed in the prostate, small intestine and colon and moderately expressed in the bone marrow and stomach. Highly expressed in pancreatic cancer tissues and shows an elevated expression level during the early S phase of the cell cycle. Also expressed at high levels in stomach cancer and colon cancer tissues.
序列相似性	Contains 1 olfactomedin-like domain.
结构域	The olfactomedin-like domain is involved in the interaction with cadherin.
翻译后修饰	N-glycosylated.
细胞定位	Secreted > extracellular space. According to PubMed:15059901, found in mitochondrion and nucleus.

图片

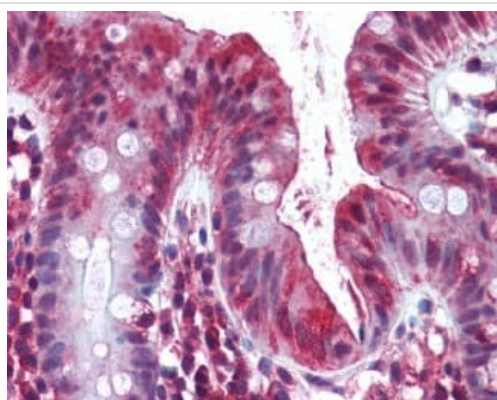


All lanes : Anti-OLFM4 antibody (ab105861) at 2 µg/ml

Lane 1 : Human liver lysate with no immunizing peptide

Lane 2 : Human liver lysate with immunizing peptide

Predicted band size: 57 kDa



Immunohistochemistry (Formalin/PFA-fixed paraffin-embedded sections) - Anti-OLFM4 antibody (ab105861)

ab105861, at 5 µg/ml, staining OLFM4 in formalin fixed, paraffin embedded colon tissue by Immunohistochemistry. After incubation with the primary antibody, slides were incubated with biotinylated secondary antibody followed by alkaline phosphatase-streptavidin and chromogen.

Please note: All products are "FOR RESEARCH USE ONLY. NOT FOR USE IN DIAGNOSTIC PROCEDURES"

Our Abpromise to you: Quality guaranteed and expert technical support

- Replacement or refund for products not performing as stated on the datasheet
- Valid for 12 months from date of delivery
- Response to your inquiry within 24 hours
- We provide support in Chinese, English, French, German, Japanese and Spanish
- Extensive multi-media technical resources to help you
- We investigate all quality concerns to ensure our products perform to the highest standards

If the product does not perform as described on this datasheet, we will offer a refund or replacement. For full details of the Abpromise, please visit <https://www.abcam.cn/abpromise> or contact our technical team.

Terms and conditions

- Guarantee only valid for products bought direct from Abcam or one of our authorized distributors