

Anti-OBFC1 antibody ab89250

[5 References](#) [3 图像](#)

概述

| | |
|-------|---|
| 产品名称 | Anti-OBFC1抗体 |
| 描述 | 小鼠多克隆抗体to OBFC1 |
| 宿主 | Mouse |
| 经测试应用 | 适用于: WB |
| 种属反应性 | 与反应: Human |
| 免疫原 | Recombinant full length protein within Human OBFC1. The exact immunogen sequence used to generate this antibody is proprietary information. If additional detail on the immunogen is needed to determine the suitability of the antibody for your needs, please contact our Scientific Support team to discuss your requirements. |
| 阳性对照 | Human spleen tissue lysate, HeLa cell lysate and OBFC1 transfected 293T cell lysate |
| 常规说明 | <p>The Life Science industry has been in the grips of a reproducibility crisis for a number of years. Abcam is leading the way in addressing this with our range of recombinant monoclonal antibodies and knockout edited cell lines for gold-standard validation. Please check that this product meets your needs before purchasing.</p> <p>If you have any questions, special requirements or concerns, please send us an inquiry and/or contact our Support team ahead of purchase. Recommended alternatives for this product can be found below, along with publications, customer reviews and Q&As</p> |

性能

| | |
|------|---|
| 形式 | Liquid |
| 存放说明 | Shipped at 4°C. Upon delivery aliquot and store at -20°C or -80°C. Avoid repeated freeze / thaw cycles. |
| 存储溶液 | pH: 7.40 Constituent: 100% PBS |
| 纯度 | Protein A purified |
| 克隆 | 多克隆 |
| 同种型 | IgG |

应用

The Abpromise guarantee

Abpromise™ 承诺保证使用ab89250于以下的经测试应用

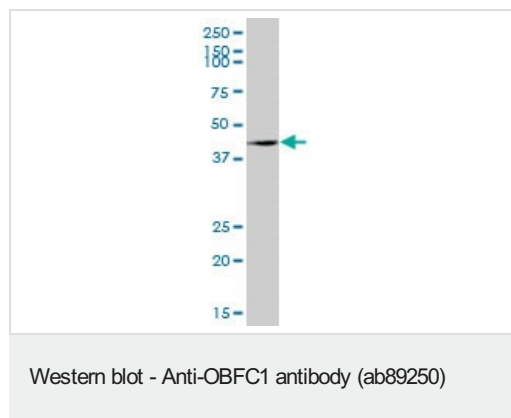
“应用说明”部分 下显示的仅为推荐的起始稀释度;实际最佳的稀释度/浓度应由使用者检定。

| 应用 | Ab评论 | 说明 |
|----|------|---|
| WB | | Use a concentration of 1 µg/ml. Predicted molecular weight: 42 kDa. |

靶标

| | |
|--------------|--|
| 功能 | Component of the CST complex, a complex that binds to single-stranded DNA and is required to protect telomeres from DNA degradation. The CST complex binds single-stranded DNA with high affinity in a sequence-independent manner, while isolated subunits bind DNA with low affinity by themselves. In addition to telomere protection, the CST complex has probably a more general role in DNA metabolism at non-telomeric sites. |
| 序列相似性 | Belongs to the STN1 family. Contains 1 OB DNA-binding domain. |
| 细胞定位 | Nucleus. Chromosome > telomere. |

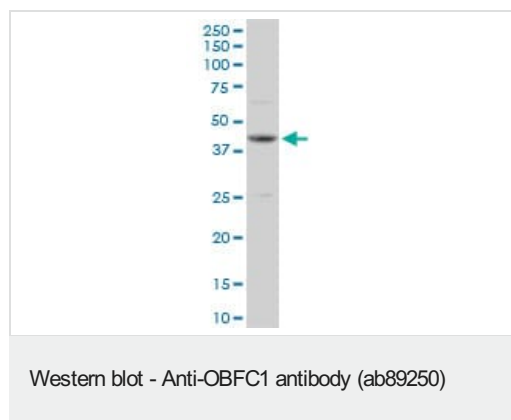
图片



Anti-OBFC1 antibody (ab89250) at 1 µg/ml + human spleen tissue lysate at 50 µg

Predicted band size: 42 kDa

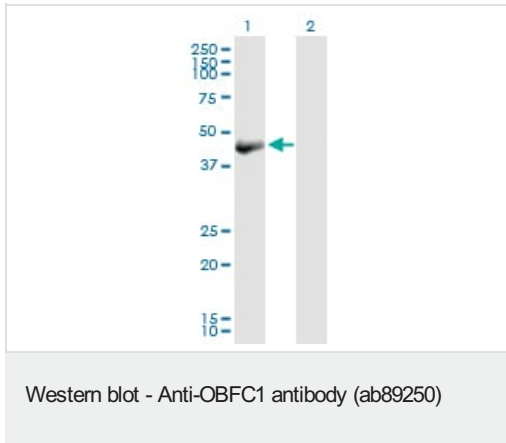
Observed band size: 42 kDa



Anti-OBFC1 antibody (ab89250) at 1 µg/ml + HeLa cell lysate at 50 µg

Predicted band size: 42 kDa

Observed band size: 42 kDa



All lanes : Anti-OBFC1 antibody (ab89250) at 1 µg/ml

Lane 1 : OBFC1 transfected 293T cell lysate

Lane 2 : Non transfected 293T cell lysate

Lysates/proteins at 25 µg per lane.

Predicted band size: 42 kDa

Observed band size: 42 kDa

Please note: All products are "FOR RESEARCH USE ONLY. NOT FOR USE IN DIAGNOSTIC PROCEDURES"

Our Abpromise to you: Quality guaranteed and expert technical support

- Replacement or refund for products not performing as stated on the datasheet
- Valid for 12 months from date of delivery
- Response to your inquiry within 24 hours
- We provide support in Chinese, English, French, German, Japanese and Spanish
- Extensive multi-media technical resources to help you
- We investigate all quality concerns to ensure our products perform to the highest standards

If the product does not perform as described on this datasheet, we will offer a refund or replacement. For full details of the Abpromise, please visit <https://www.abcam.cn/abpromise> or contact our technical team.

Terms and conditions

- Guarantee only valid for products bought direct from Abcam or one of our authorized distributors