

Anti-NUP133 antibody ab114096

1 图像

概述

产品名称	Anti-NUP133抗体
描述	兔多克隆抗体to NUP133
宿主	Rabbit
经测试应用	适用于: IP
种属反应性	与反应: Human 预测可用于: Chimpanzee, Rhesus monkey, Gorilla, Orangutan 
免疫原	Synthetic peptide, corresponding to a region between amino acids 650-700 of Human NUP133 (NP_060700.2).
阳性对照	Whole cell lysate from Hela cells.
常规说明	<p>The Life Science industry has been in the grips of a reproducibility crisis for a number of years. Abcam is leading the way in addressing this with our range of recombinant monoclonal antibodies and knockout edited cell lines for gold-standard validation. Please check that this product meets your needs before purchasing.</p> <p>If you have any questions, special requirements or concerns, please send us an inquiry and/or contact our Support team ahead of purchase. Recommended alternatives for this product can be found below, along with publications, customer reviews and Q&As</p>

性能

形式	Liquid
存放说明	Shipped at 4°C. Upon delivery aliquot and store at -20°C. Avoid freeze / thaw cycles.
存储溶液	pH: 7 Preservative: 0.09% Sodium azide Constituent: 99% Tris citrate/phosphate
纯度	pH: 7 to 8 Immunogen affinity purified
纯化说明	ab114096 was affinity purified using an epitope specific to NUP133 immobilized on solid support.
克隆	多克隆

同种型

IgG

应用

The Abpromise guarantee

Abpromise™承诺保证使用ab114096于以下的经测试应用

“应用说明”部分 下显示的仅为推荐的起始稀释度;实际最佳的稀释度/浓度应由使用者检定。

应用	Ab评论	说明
IP		Use at 5-10 µg/mg of lysate.

靶标

功能

Involves in poly(A)+ RNA transport.

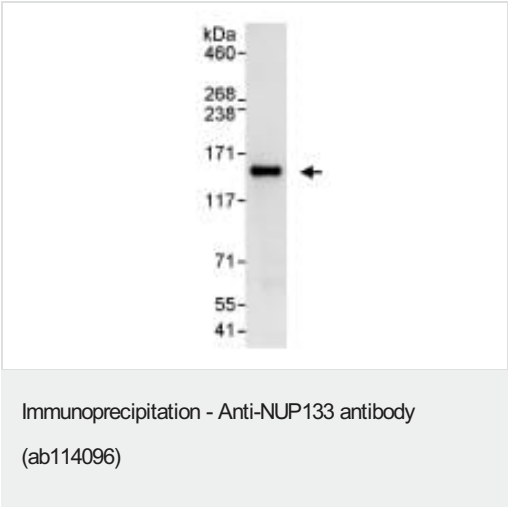
序列相似性

Belongs to the nucleoporin Nup133 family.

细胞定位

Nucleus > nuclear pore complex. Chromosome > centromere > kinetochore. Located on both the cytoplasmic and nuclear sides of the nuclear pore. During mitosis, localizes to the kinetochores.

图片



A rabbit anti-NUP133 antibody, at 1 µg/ml, staining NUP133 in HeLa whole cell lysate immunoprecipitated using ab114096 at 10 µg/mg lysate (1 mg for IP; 20% of IP loaded/lane). Detection: Chemiluminescence with an exposure time of 10 seconds.

Please note: All products are "FOR RESEARCH USE ONLY. NOT FOR USE IN DIAGNOSTIC PROCEDURES"

Our Abpromise to you: Quality guaranteed and expert technical support

- Replacement or refund for products not performing as stated on the datasheet
- Valid for 12 months from date of delivery
- Response to your inquiry within 24 hours
- We provide support in Chinese, English, French, German, Japanese and Spanish
- Extensive multi-media technical resources to help you

- We investigate all quality concerns to ensure our products perform to the highest standards

If the product does not perform as described on this datasheet, we will offer a refund or replacement. For full details of the Abpromise, please visit <https://www.abcam.cn/abpromise> or contact our technical team.

Terms and conditions

- Guarantee only valid for products bought direct from Abcam or one of our authorized distributors