


Anti-Nup107 antibody ab85916

2 References 2 图像

概述	
产品名称	Anti-Nup107抗体
描述	兔多克隆抗体to Nup107
宿主	Rabbit
经测试应用	适用于: WB, IP
种属反应性	与反应: Human 预测可用于: Chimpanzee, Rhesus monkey, Gorilla, Orangutan 
免疫原	Synthetic peptide, corresponding to a region between residues 875 and 925 of Human Nup107 (NP_065134.1)
阳性对照	HeLa and 293T whole cell lysates.
常规说明	<p>The Life Science industry has been in the grips of a reproducibility crisis for a number of years. Abcam is leading the way in addressing this with our range of recombinant monoclonal antibodies and knockout edited cell lines for gold-standard validation. Please check that this product meets your needs before purchasing.</p> <p>If you have any questions, special requirements or concerns, please send us an inquiry and/or contact our Support team ahead of purchase. Recommended alternatives for this product can be found below, along with publications, customer reviews and Q&amp;As</p>
性能	
形式	Liquid
存放说明	Shipped at 4°C. Upon delivery aliquot and store at -20°C. Avoid freeze / thaw cycles.
存储溶液	pH: 6.8 Preservative: 0.09% Sodium azide Constituents: Tris buffered saline, 0.1% BSA
纯度	Immunogen affinity purified
纯化说明	ab85916 was affinity purified using an epitope specific to Nup107 immobilized on solid support.
克隆	多克隆
同种型	IgG

**The Abpromise guarantee**      **Abpromise™**承诺保证使用ab85916于以下的经测试应用

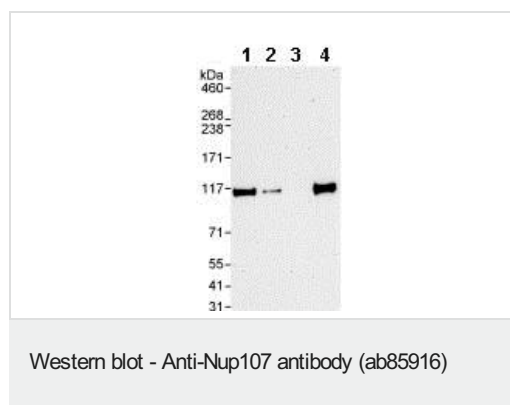
“应用说明”部分 下显示的仅为推荐的起始稀释度;实际最佳的稀释度/浓度应由使用者检定。

应用	Ab评论	说明
WB		1/2000 - 1/10000. Detects a band of approximately 106 kDa (predicted molecular weight: 106 kDa).
IP		Use at 2-5 µg/mg of lysate.

**靶标**

<b>功能</b>	Plays a role in the nuclear pore complex (NPC) assembly and/or maintenance. Required for the assembly of peripheral proteins into the NPC. May anchor NUP62 to the NPC.
<b>组织特异性</b>	Ubiquitously expressed in fetal and adult tissues.
<b>疾病相关</b>	Nephrotic syndrome 11
<b>序列相似性</b>	Belongs to the nucleoporin Nup84/Nup107 family.
<b>细胞定位</b>	Nucleus membrane. Nucleus, nuclear pore complex. Chromosome, centromere, kinetochore. Located on both the cytoplasmic and nuclear sides of the NPC core structure (PubMed:11564755). During mitosis, localizes to the kinetochores (PubMed:11564755). Dissociates from the disassembled NPC structure late during prophase of mitosis (PubMed:11564755).

**图片**



**All lanes :** Anti-Nup107 antibody (ab85916) at 0.04 µg/ml

**Lane 1 :** HeLa whole cell lysate at 50 µg

**Lane 2 :** HeLa whole cell lysate at 15 µg

**Lane 3 :** HeLa whole cell lysate at 5 µg

**Lane 4 :** 293T whole cell lysate at 50 µg

**Predicted band size:** 106 kDa

**Observed band size:** 106 kDa

**Exposure time:** 3 minutes



Immunoprecipitation - Anti-Nup107 antibody  
(ab85916)

Detection of Nup107 by Western Blot of Immunoprecipitate.  
ab85916 at 1 µg/ml staining Nup107 in HeLa whole cell lysate  
immunoprecipitated using ab85916 at 3 µg/mg lysate (1 mg/IP; 20%  
of IP loaded/lane).  
Detection: Chemiluminescence with exposure time of 10 seconds.

**Please note:** All products are "FOR RESEARCH USE ONLY. NOT FOR USE IN DIAGNOSTIC PROCEDURES"

### Our Abpromise to you: Quality guaranteed and expert technical support

---

- Replacement or refund for products not performing as stated on the datasheet
- Valid for 12 months from date of delivery
- Response to your inquiry within 24 hours
- We provide support in Chinese, English, French, German, Japanese and Spanish
- Extensive multi-media technical resources to help you
- We investigate all quality concerns to ensure our products perform to the highest standards

If the product does not perform as described on this datasheet, we will offer a refund or replacement. For full details of the Abpromise, please visit <https://www.abcam.cn/abpromise> or contact our technical team.

### Terms and conditions

---

- Guarantee only valid for products bought direct from Abcam or one of our authorized distributors