


Anti-Nucleostemin antibody ab70346

★★★★★ [10 Abreviews](#) [14 References](#) [7 图像](#)

概述

产品名称	Anti-Nucleostemin抗体
描述	兔多克隆抗体to Nucleostemin
宿主	Rabbit
经测试应用	适用于: ICC/IF, IHC-P, WB, IP
种属反应性	与反应: Mouse, Rat, Chicken, Human 预测可用于: Rabbit, Horse, Dog, Chimpanzee 
免疫原	Synthetic peptide corresponding to Human Nucleostemin (C terminal). Database link: Q9BVP2
阳性对照	HeLa, 293T and mouse 3T3 whole cell lysates.
常规说明	<p>The Life Science industry has been in the grips of a reproducibility crisis for a number of years. Abcam is leading the way in addressing this with our range of recombinant monoclonal antibodies and knockout edited cell lines for gold-standard validation. Please check that this product meets your needs before purchasing.</p> <p>If you have any questions, special requirements or concerns, please send us an inquiry and/or contact our Support team ahead of purchase. Recommended alternatives for this product can be found below, along with publications, customer reviews and Q&As</p>

性能

形式	Liquid
存放说明	Shipped at 4°C. Upon delivery aliquot and store at -20°C. Avoid freeze / thaw cycles.
存储溶液	pH: 6.8 Preservative: 0.09% Sodium azide Constituents: 0.1% BSA, Tris buffered saline
纯度	Immunogen affinity purified
纯化说明	ab70346 was affinity purified using an epitope specific to Nucleostemin immobilized on solid support.
克隆	多克隆
同种型	IgG

应用

The Abpromise guarantee **Abpromise™**承诺保证使用ab70346于以下的经测试应用

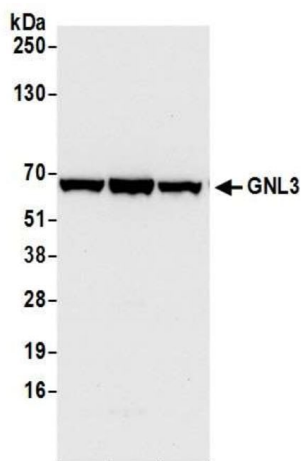
“应用说明”部分 下显示的仅为推荐的起始稀释度;实际最佳的稀释度/浓度应由使用者检定。

应用	Ab评论	说明
ICC/IF	★★★★★ (2)	Use a concentration of 1 µg/ml.
IHC-P	★★★★★ (3)	1/200 - 1/500. Perform heat mediated antigen retrieval with citrate buffer pH 6 before commencing with IHC staining protocol.
WB	★★★★★ (4)	1/2000 - 1/10000. Detects a band of approximately 62 kDa (predicted molecular weight: 62 kDa).
IP	★★★★★ (1)	Use at 1-2 µg/mg of lysate.

靶标

功能	May be required to maintain the proliferative capacity of stem cells and may play an important role in tumorigenesis.
组织特异性	Increased levels in lung tissue in cancer patients.
序列相似性	Belongs to the MMR1/HSR1 GTP-binding protein family. Contains 1 G (guanine nucleotide-binding) domain.
结构域	The basic domain (B) allows nucleolar localization in the absence of GTP. The intermediate domain (I) inhibits nucleolar localization by the B domain and is required for exit from the nucleolus. Exit from the nucleolus to the nucleoplasm requires both the I and the acidic (A) domains, and may be triggered by GTP hydrolysis. In contrast to other GTP-binding proteins, this family is characterized by a circular permutation of the GTPase motifs described by a G4-G1-G3 pattern.
细胞定位	Nucleus. Nucleus > nucleolus. Shuttles between the nucleus and nucleolus.

图片



Western blot - Anti-Nucleostemin antibody
(ab70346)

All lanes : Anti-Nucleostemin antibody (ab70346) at 1/5000 dilution

Lane 1 : HeLa Whole cell lysate

Lane 2 : HEK293T Whole cell lysate

Lane 3 : Jurkat Whole cell lysate

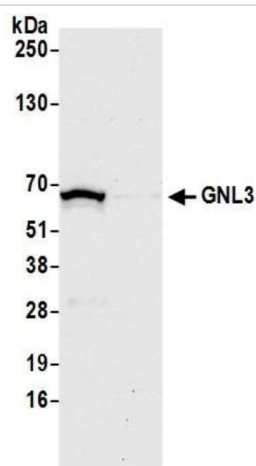
Lysates/proteins at 50 µg per lane.

Secondary

All lanes : Goat anti-Rabbit Light Chain HRP Conjugate

Predicted band size: 62 kDa

Detection: Chemiluminescence with an exposure time of 10 seconds



Western blot - Anti-Nucleostemin antibody
(ab70346)

All lanes : Anti-Nucleostemin antibody (ab70346) at 1/2000 dilution

Lane 1 : TMCK-1 Whole cell lysate

Lane 2 : NIH 3T3 :Whole cell lysate

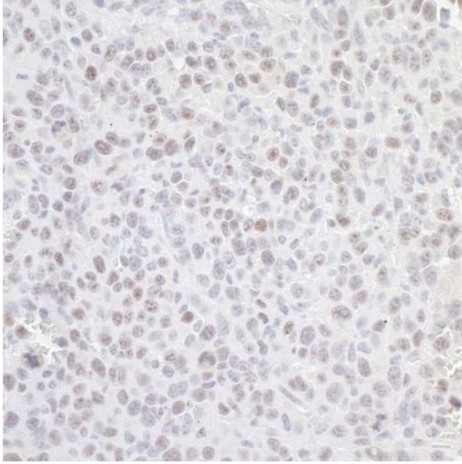
Lysates/proteins at 50 µg per lane.

Secondary

All lanes : Goat anti-Rabbit Light Chain HRP Conjugate

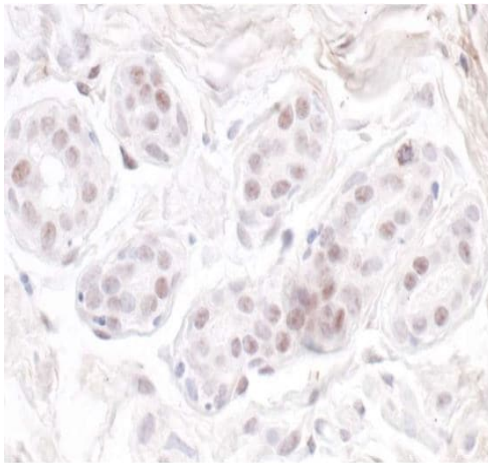
Predicted band size: 62 kDa

Detection: Chemiluminescence with an exposure time of 30 seconds.



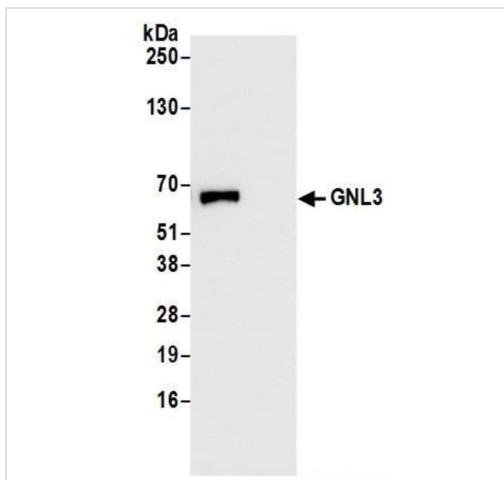
Immunohistochemical analysis of Formalin/PFA-fixed paraffin-embedded section of mouse CT26 colon carcinoma tissue labelling Nucleostemin with ab70346 at 1:200 (1µg/ml). Detection: DAB.

Immunohistochemistry (Formalin/PFA-fixed paraffin-embedded sections) - Anti-Nucleostemin antibody (ab70346)



Immunohistochemical analysis of Formalin/PFA-fixed paraffin-embedded section of human breast carcinoma tissue labelling Nucleostemin with ab70346 at 1:200 (1µg/ml). Detection: DAB.

Immunohistochemistry (Formalin/PFA-fixed paraffin-embedded sections) - Anti-Nucleostemin antibody (ab70346)

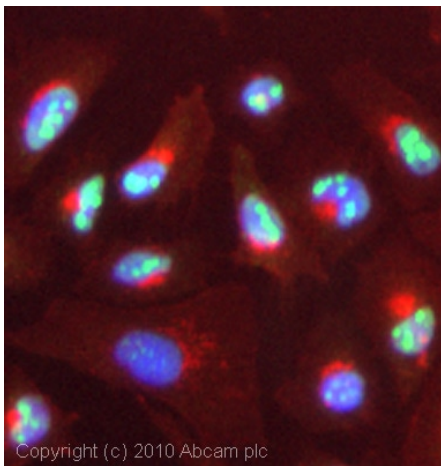


Immunoprecipitation - Anti-Nucleostemin antibody
(ab70346)

Nucleostemin was immunoprecipitated from HEK-293T whole cell lysate with 6 µg/mg lysate. Western blot was performed from the immunoprecipitate using ab70346 at 0.04 µg/ml dilution.

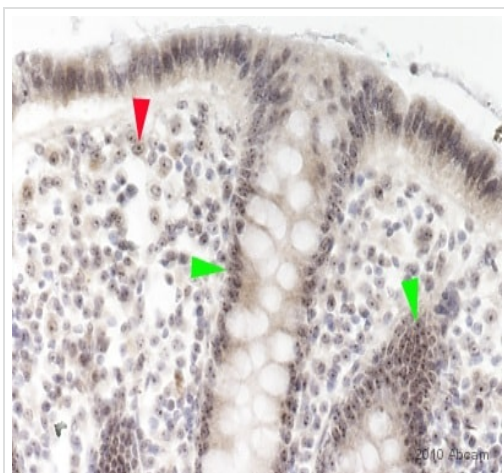
Lane 1: ab70346 IP in HEK-293T whole cell lysate.

Lane 2: Control IgG IP in HEK-293T whole cell lysate.



Immunocytochemistry/ Immunofluorescence - Anti-
Nucleostemin antibody (ab70346)

ICC/IF image of ab70346 stained HeLa cells. The cells were 4% formaldehyde fixed (10 min) and then incubated in 1%BSA / 10% normal goat serum / 0.3M glycine in 0.1% PBS-Tween for 1h to permeabilise the cells and block non-specific protein-protein interactions. The cells were then incubated with the antibody (ab70346, 5µg/ml) overnight at +4°C. The secondary antibody (green) was Alexa Fluor® 488 goat anti-rabbit IgG (H+L) used at a 1/1000 dilution for 1h. Alexa Fluor® 594 WGA was used to label plasma membranes (red) at a 1/200 dilution for 1h. DAPI was used to stain the cell nuclei (blue) at a concentration of 1.43µM.



Immunohistochemistry (Formalin/PFA-fixed paraffin-embedded sections) - Anti-Nucleostemin antibody (ab70346)

This image is courtesy of an abreview submitted by Carl Hobbs, King's College London, United Kingdom

Immunohistochemical detection of Nucleostemin with ab70346 on formaldehyde-fixed paraffin-embedded human colon sections. Antigen retrieval step: heat mediated in citric acid pH6 buffer. Blocking step: 1% BSA for 10 mins @ rt°C. Primary antibody ab70346 incubated at 1/50 for 16 hours in TBS/BSA/azide. Secondary antibody: anti-rabbit IgG conjugated to biotin (1/200). The intestinal epithelium is the most rapidly self-renewing tissue in adult mammals. Stem cell markers have been observed in cycling columnar cells at the crypt base (Nature 449, 1003-1007; 2007). The cells (nuclei of the simple columnar epithelium of the upper mucosa) immunoreactive for Nucleostemin in this image (green arrowheads) anatomically correspond to the same cells expected to be Lgr5 positive. A red arrowhead indicates nucleolar positivity in one of many cell nuclei in the Lamina propria of the mucosa (this area is not known for stem cell posit

Please note: All products are "FOR RESEARCH USE ONLY. NOT FOR USE IN DIAGNOSTIC PROCEDURES"

Our Abpromise to you: Quality guaranteed and expert technical support

- Replacement or refund for products not performing as stated on the datasheet
- Valid for 12 months from date of delivery
- Response to your inquiry within 24 hours
- We provide support in Chinese, English, French, German, Japanese and Spanish
- Extensive multi-media technical resources to help you
- We investigate all quality concerns to ensure our products perform to the highest standards

If the product does not perform as described on this datasheet, we will offer a refund or replacement. For full details of the Abpromise, please visit <https://www.abcam.cn/abpromise> or contact our technical team.

Terms and conditions

- Guarantee only valid for products bought direct from Abcam or one of our authorized distributors