

### Anti-Nucleoside phosphorylase antibody [EPR5715] ab109447

敲除验证
重组
RabMAb

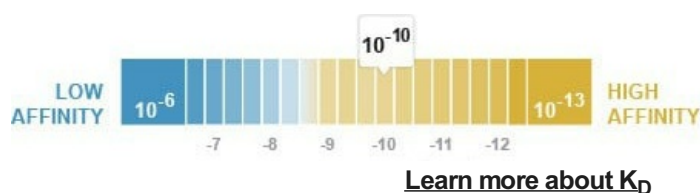
#### 5 图像

#### 概述

产品名称	Anti-Nucleoside phosphorylase抗体[EPR5715]
描述	兔单克隆抗体[EPR5715] to Nucleoside phosphorylase
宿主	Rabbit
经测试应用	适用于: WB, ICC/IF 不适用于: IHC-P or IP
种属反应性	与反应: Human
免疫原	Synthetic peptide. This information is proprietary to Abcam and/or its suppliers.
阳性对照	HeLa, Jurkat, JAR, K562, Human placenta, and 293T lysates. ICC/IF: SH SY5Y cells.
常规说明	<p>This product is a recombinant monoclonal antibody, which offers several advantages including:</p> <ul style="list-style-type: none"> <li>- High batch-to-batch consistency and reproducibility</li> <li>- Improved sensitivity and specificity</li> <li>- Long-term security of supply</li> <li>- Animal-free production</li> </ul> <p>For more information <a href="#">see here</a>.</p> <p>Our RabMAb<sup>®</sup> technology is a patented hybridoma-based technology for making rabbit monoclonal antibodies. For details on our patents, please refer to <a href="#">RabMAb<sup>®</sup> patents</a>.</p> <p>Mouse, Rat: We have preliminary internal testing data to indicate this antibody may not react with these species. Please contact us for more information.</p>

#### 性能

形式	Liquid
存放说明	Shipped at 4°C. Store at -20°C. Stable for 12 months at -20°C.
解离常数 (K <sub>D</sub> )	K <sub>D</sub> = 1.76 x 10 <sup>-10</sup> M



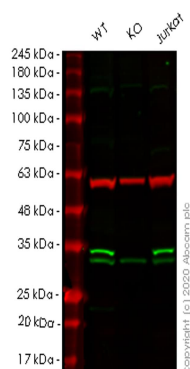
存储溶液	pH: 7.20 Preservative: 0.05% Sodium azide Constituents: 0.1% BSA, 40% Glycerol (glycerin, glycerine), 9.85% Tris glycine, 50% Tissue culture supernatant
纯度	Protein A purified
克隆	单克隆
克隆编号	EPR5715
同种型	IgG

**The Abpromise guarantee**      **Abpromise™承诺保证使用ab109447于以下的经测试应用**

应用	Ab评论	说明
WB		1/1000 - 1/10000. Detects a band of approximately 31 kDa (predicted molecular weight: 32 kDa).
ICC/IF		1/100 - 1/250.

靶标

疾病相关	Defects in PNP are the cause of purine nucleoside phosphorylase deficiency (PNP deficiency) [MIM:613179]. It leads to a severe T-cell immunodeficiency with neurologic disorder in children.
序列相似性	Belongs to the PNP/MTAP phosphorylase family.
细胞定位	Cytoplasm > cytoskeleton.



Western blot - Anti-Nucleoside phosphorylase antibody [EPR5715] (ab109447)

**All lanes :** Anti-Nucleoside phosphorylase antibody [EPR5715] (ab109447) at 1/1000 dilution

**Lane 1 :** Wild-type HeLa cell lysate

**Lane 2 :** PNP knockout HeLa cell lysate

**Lane 3 :** Jurkat cell lysate

Lysates/proteins at 20 µg per lane.

### Secondary

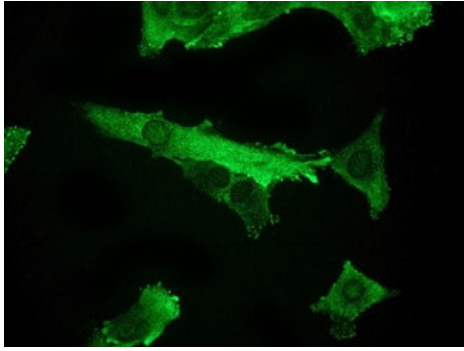
**All lanes :** Goat anti-Rabbit IgG H&L (IRDye® 800CW) preadsorbed ([ab216773](#)) at 1/10000 dilution

**Predicted band size:** 32 kDa

**Observed band size:** 31 kDa

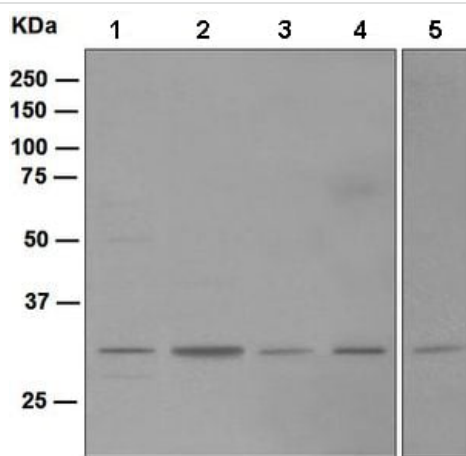
**Lanes 1-3:** Merged signal (red and green). Green - ab109447 observed at 31 kDa. Red - loading control [ab7291](#) observed at 50 kDa.

ab109447 Anti-Nucleoside phosphorylase antibody [EPR5715] was shown to specifically react with Nucleoside phosphorylase in wild-type HeLa cells. Loss of signal was observed when knockout cell line [ab266158](#) (knockout cell lysate [ab257594](#)) was used. Wild-type and Nucleoside phosphorylase knockout samples were subjected to SDS-PAGE. ab109447 and Anti-alpha Tubulin antibody [DM1A] - Loading Control ([ab7291](#)) were incubated at room temperature for 2.5 hours at 1 in 1000 dilution and 1 in 20000 dilution respectively. Blots were developed with Goat anti-Rabbit IgG H&L (IRDye® 800CW) preadsorbed ([ab216773](#)) and Goat anti-Mouse IgG H&L (IRDye® 680RD) preadsorbed ([ab216776](#)) secondary antibodies at 1 in 20000 dilution for 1 hour at room temperature before imaging.



Immunocytochemistry/ Immunofluorescence - Anti-Nucleoside phosphorylase antibody [EPR5715] (ab109447)

ab109447 at 1/100 dilution staining Nucleoside phosphorylase in SH SY5Y cells by Immunofluorescence.



Western blot - Anti-Nucleoside phosphorylase antibody [EPR5715] (ab109447)

**All lanes :** Anti-Nucleoside phosphorylase antibody [EPR5715] (ab109447) at 1/1000 dilution

**Lane 1 :** Jurkat lysate

**Lane 2 :** JAR lysate

**Lane 3 :** K562 lysate

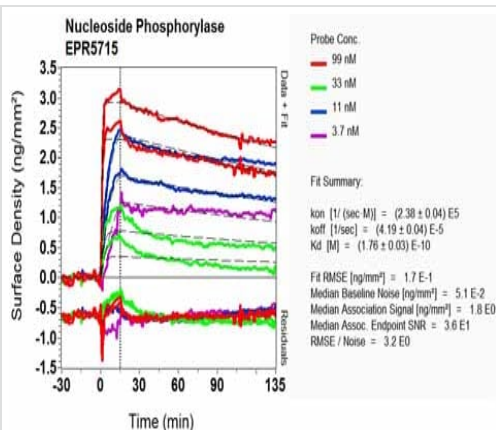
**Lane 4 :** Human placenta lysate

**Lane 5 :** 293T lysate

Lysates/proteins at 10 µg per lane.

**Predicted band size:** 32 kDa

**Observed band size:** 31 kDa



Ox-RD Scanning - Anti-Nucleoside phosphorylase antibody [EPR5715] (ab109447)

Equilibrium disassociation constant ( $K_D$ )

Learn more about  $K_D$

[Click here to learn more about  \$K\_D\$](#)

### Why choose a recombinant antibody?



**Research with confidence**  
Consistent and reproducible results



**Long-term and scalable supply**  
Recombinant technology



**Success from the first experiment**  
Confirmed specificity



**Ethical standards compliant**  
Animal-free production

Anti-Nucleoside phosphorylase antibody [EPR5715]  
(ab109447)

**Please note:** All products are "FOR RESEARCH USE ONLY. NOT FOR USE IN DIAGNOSTIC PROCEDURES"

### Our Abpromise to you: Quality guaranteed and expert technical support

---

- Replacement or refund for products not performing as stated on the datasheet
- Valid for 12 months from date of delivery
- Response to your inquiry within 24 hours
- We provide support in Chinese, English, French, German, Japanese and Spanish
- Extensive multi-media technical resources to help you
- We investigate all quality concerns to ensure our products perform to the highest standards

If the product does not perform as described on this datasheet, we will offer a refund or replacement. For full details of the Abpromise, please visit <https://www.abcam.cn/abpromise> or contact our technical team.

### Terms and conditions

---

- Guarantee only valid for products bought direct from Abcam or one of our authorized distributors