


# Anti-Nuclear Matrix Protein p84 antibody [EPR5662(2)] ab131268

**重组** RabMAb

★★★★★ **1 Abreviews** **13 References** **5 图像**

### 概述

产品名称	Anti-Nuclear Matrix蛋白p84抗体[EPR5662(2)]
描述	兔单克隆抗体[EPR5662(2)] to核Matrix蛋白p84
宿主	Rabbit
经测试应用	<b>适用于:</b> Flow Cyt (Intra), ICC/IF, WB, IHC-P <b>不适用于:</b> IP
种属反应性	<b>与反应:</b> Human <b>预测可用于:</b> Mouse, Rat 
免疫原	Synthetic peptide within Human Nuclear Matrix Protein p84 aa 350-450. The exact sequence is proprietary.
阳性对照	WB: HeLa, U-87 MG, 293T and HepG2 ( <b>ab7900</b> ) cell lysates. IHC-P: Human breast carcinoma tissue. ICC/IF: HeLa cells. Flow Cyt (intra): HeLa cells.
常规说明	This product is a recombinant monoclonal antibody, which offers several advantages including: <ul style="list-style-type: none"> <li>- High batch-to-batch consistency and reproducibility</li> <li>- Improved sensitivity and specificity</li> <li>- Long-term security of supply</li> <li>- Animal-free production</li> </ul> For more information <b><a href="#">see here</a></b> . Our RabMAb <sup>®</sup> technology is a patented hybridoma-based technology for making rabbit monoclonal antibodies. For details on our patents, please refer to <b><a href="#">RabMAb<sup>®</sup> patents</a></b> .

### 性能

形式	Liquid
存放说明	Shipped at 4°C. Store at -20°C. Stable for 12 months at -20°C.
存储溶液	pH: 7.20 Preservative: 0.01% Sodium azide Constituents: 9% PBS, 40% Glycerol (glycerin, glycerine), 0.05% BSA, 50% Tissue culture supernatant
纯度	Tissue culture supernatant
克隆	单克隆

克隆编号

EPR5662(2)

同种型

IgG

应用

The Abpromise guarantee

Abpromise™承诺保证使用ab131268于以下的经测试应用

“应用说明”部分 下显示的仅为推荐的起始稀释度;实际最佳的稀释度/浓度应由使用者检定。

应用	Ab评论	说明
Flow Cyt (Intra)		1/120.
ICC/IF		1/100.
WB	★★★★★ (1)	1/10000 - 1/50000. Detects a band of approximately 84 kDa (predicted molecular weight: 76 kDa).
IHC-P		1/50 - 1/100. Perform heat mediated antigen retrieval before commencing with IHC staining protocol. (Heat to 98°C, allow to cool for 10-20 minutes)

应用说明

Is unsuitable for IP.

靶标

功能

Component of the THO subcomplex of the TREX complex. The TREX complex specifically associates with spliced mRNA and not with unspliced pre-mRNA. It is recruited to spliced mRNAs by a transcription-independent mechanism. Binds to mRNA upstream of the exon-junction complex (EJC) and is recruited in a splicing- and cap-dependent manner to a region near the 5' end of the mRNA where it functions in mRNA export. The recruitment occurs via an interaction between THOC4 and the cap-binding protein NCBP1. DDX39B functions as a bridge between THOC4 and the THO complex. The TREX complex is essential for the export of Kaposi's sarcoma-associated herpesvirus (KSHV) intronless mRNAs and infectious virus production. The recruitment of the TREX complex to the intronless viral mRNA occurs via an interaction between KSHV ORF57 protein and THOC4.

Regulates transcriptional elongation of a subset of genes. Participates in an apoptotic pathway which is characterized by activation of caspase-6, increases in the expression of BAK1 and BCL2L1 and activation of NF-kappa-B. This pathway does not require p53/TP53, nor does the presence of p53/TP53 affect the efficiency of cell killing. Activates a G2/M cell cycle checkpoint prior to the onset of apoptosis. Apoptosis is inhibited by association with RB1.

组织特异性

Ubiquitous. Expressed in various cancer cell lines. Expressed at very low levels in normal breast epithelial cells and highly expressed in breast tumors. Expression is strongly associated with an aggressive phenotype of breast tumors and expression correlates with tumor size and the metastatic state of the tumor progression.

序列相似性

Contains 1 death domain.

结构域

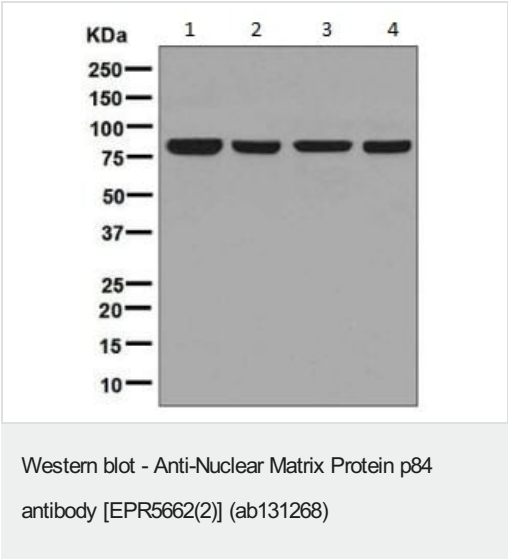
An intact death domain is needed for apoptosis.

翻译后修饰

Expression is altered specifically during apoptosis and is accompanied by the appearance of novel forms with smaller apparent molecular mass.

细胞定位	Cytoplasm and Nucleus speckle. Nucleus > nucleoplasm. Nucleus matrix. Cytoplasm. Can shuttle between the nucleus and cytoplasm. Nuclear localization is required for induction of apoptotic cell death. Translocates to the cytoplasm during the early phase of apoptosis execution.
形式	Nuclear (Isoform 1) and Cytoplasmic (Isoform 1 and 2).

图片



**All lanes :** Anti-Nuclear Matrix Protein p84 antibody [EPR5662(2)] (ab131268) at 1/10000 dilution

**Lane 1 :** HeLa cell lysate

**Lane 2 :** U-87 MG cell lysate

**Lane 3 :** 293T cell lysate

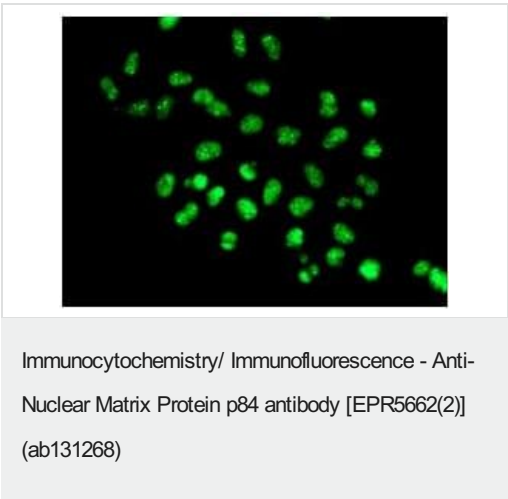
**Lane 4 :** HepG2 cell lysate

Lysates/proteins at 10 µg per lane.

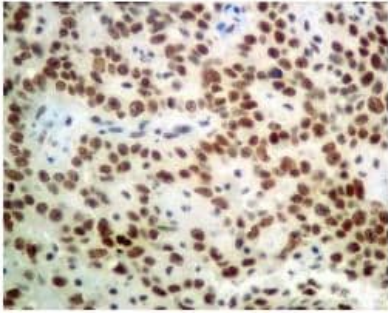
**Secondary**

**All lanes :** Goat anti-Rabbit HRP at 1/2000 dilution

**Predicted band size:** 76 kDa



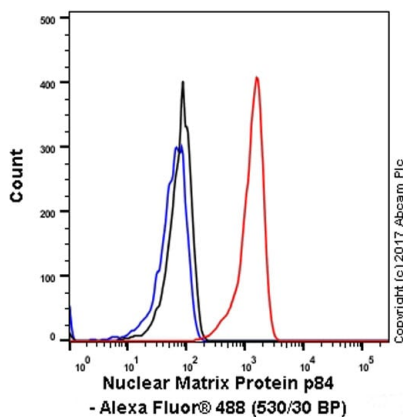
Immunofluorescent staining of HeLa cells labelling Nuclear Matrix Protein p84 with ab131268 at 1/100 dilution.



Immunohistochemistry (Formalin/PFA-fixed paraffin-embedded sections) - Anti-Nuclear Matrix Protein p84 antibody [EPR5662(2)] (ab131268)

Immunohistochemical analysis of paraffin embedded human breast carcinoma tissue labeling Nuclear Matrix Protein p84 with ab131268 at 1/50 dilution.

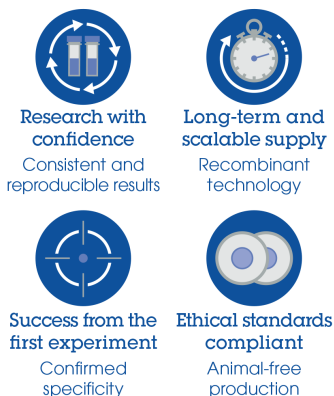
Perform heat mediated antigen retrieval before commencing with IHC staining protocol.



Flow Cytometry (Intracellular) - Anti-Nuclear Matrix Protein p84 antibody [EPR5662(2)] (ab131268)

Intracellular Flow Cytometry analysis of HeLa (human cervix adenocarcinoma) cells labeling Nuclear Matrix Protein p84 with purified ab131268 at 1/120 dilution (10ug/ml) (red). Cells were fixed with 4% paraformaldehyde and permeabilised with 90% methanol. A Goat anti rabbit IgG (Alexa Fluor® 488) (1/2000 dilution) was used as the secondary antibody. Rabbit monoclonal IgG (Black) was used as the isotype control, cells without incubation with primary antibody and secondary antibody (Blue) were used as the unlabeled control.

### Why choose a recombinant antibody?



Anti-Nuclear Matrix Protein p84 antibody [EPR5662(2)] (ab131268)

**Please note:** All products are "FOR RESEARCH USE ONLY. NOT FOR USE IN DIAGNOSTIC PROCEDURES"

### **Our Abpromise to you: Quality guaranteed and expert technical support**

---

- Replacement or refund for products not performing as stated on the datasheet
- Valid for 12 months from date of delivery
- Response to your inquiry within 24 hours
  
- We provide support in Chinese, English, French, German, Japanese and Spanish
- Extensive multi-media technical resources to help you
- We investigate all quality concerns to ensure our products perform to the highest standards

If the product does not perform as described on this datasheet, we will offer a refund or replacement. For full details of the Abpromise, please visit <https://www.abcam.cn/abpromise> or contact our technical team.

### **Terms and conditions**

---

- Guarantee only valid for products bought direct from Abcam or one of our authorized distributors