


# Anti-NUCKS1 antibody ab84710

[3 References](#) [3 图像](#)

### 概述

<b>产品名称</b>	Anti-NUCKS1抗体
<b>描述</b>	兔多克隆抗体to NUCKS1
<b>宿主</b>	Rabbit
<b>经测试应用</b>	<b>适用于:</b> IHC-P
<b>种属反应性</b>	<b>与反应:</b> Mouse, Human <b>预测可用于:</b> Horse, Guinea pig, Chimpanzee, Rhesus monkey, Gorilla, Orangutan 
<b>免疫原</b>	Synthetic peptide, corresponding to a region within residues 1 and 50 of Human NUCKS1, NP_073568.2
<b>阳性对照</b>	Human breast carcinoma, prostate carcinoma, Mouse renal cell carcinoma
<b>常规说明</b>	<p>The Life Science industry has been in the grips of a reproducibility crisis for a number of years. Abcam is leading the way in addressing this with our range of recombinant monoclonal antibodies and knockout edited cell lines for gold-standard validation. Please check that this product meets your needs before purchasing.</p> <p>If you have any questions, special requirements or concerns, please send us an inquiry and/or contact our Support team ahead of purchase. Recommended alternatives for this product can be found below, along with publications, customer reviews and Q&amp;As</p>

### 性能

<b>形式</b>	Liquid
<b>存放说明</b>	Shipped at 4°C. Upon delivery aliquot and store at -20°C. Avoid freeze / thaw cycles.
<b>存储溶液</b>	pH: 6.8 Preservative: 0.09% Sodium azide Constituents: 0.1% BSA, Tris buffered saline
<b>纯度</b>	Immunogen affinity purified
<b>纯化说明</b>	Antibody concentration was determined by extinction coefficient: absorbance at 280 nm of 1.4 equals 1.0 mg of IgG.
<b>克隆</b>	多克隆
<b>同种型</b>	IgG

## 应用

**The Abpromise guarantee**      **Abpromise™**承诺保证使用ab84710于以下的经测试应用

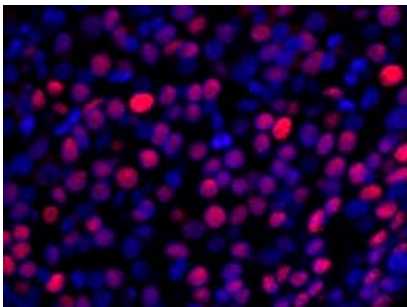
“应用说明”部分 下显示的仅为推荐的起始稀释度;实际最佳的稀释度/浓度应由使用者检定。

应用	Ab评论	说明
IHC-P		1/100 - 1/500. Epitope exposure is recommended. Epitope exposure with citrate buffer will enhance staining.

## 靶标

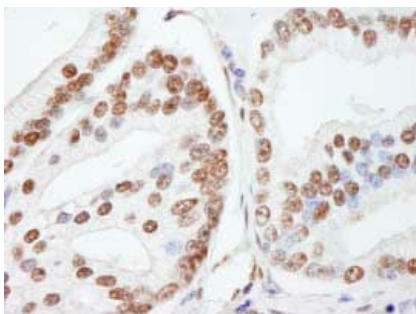
翻译后修饰	Phosphorylated by CDK1 and casein kinase. Phosphorylated upon DNA damage, probably by ATM or ATR.
细胞定位	Nucleus.

## 图片



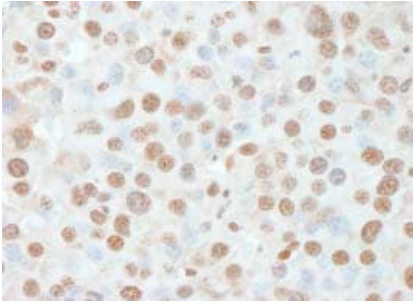
Detection of Human NUCKS1 by Immunofluorescence.  
Sample: formalin fixed, paraffin embedded section of Human breast carcinoma.  
Antibody: ab84710 used at a dilution of 1/100.  
Detection: Red-fluorescent goat anti-rabbit IgG highly cross-adsorbed Antibody Hilyte Plus™555 used at a dilution of 1/100.

Immunohistochemistry (Formalin/PFA-fixed paraffin-embedded sections) - Anti-NUCKS1 antibody (ab84710)



Detection of Human NUCKS1 by Immunohistochemistry.  
Sample: FFPE section of Human prostate carcinoma.  
Antibody: ab84710 used at a dilution of 1/250.  
Detection: DAB staining.

Immunohistochemistry (Formalin/PFA-fixed paraffin-embedded sections) - Anti-NUCKS1 antibody (ab84710)



Immunohistochemistry (Formalin/PFA-fixed paraffin-embedded sections) - Anti-NUCKS1 antibody (ab84710)

Detection of Mouse NUCKS1 by Immunohistochemistry.  
Sample: FFPE section of Mouse renal cell carcinoma.  
Antibody: ab84710 used at a dilution of 1/250.  
Detection: DAB staining.

**Please note:** All products are "FOR RESEARCH USE ONLY. NOT FOR USE IN DIAGNOSTIC PROCEDURES"

### **Our Abpromise to you: Quality guaranteed and expert technical support**

---

- Replacement or refund for products not performing as stated on the datasheet
- Valid for 12 months from date of delivery
- Response to your inquiry within 24 hours
- We provide support in Chinese, English, French, German, Japanese and Spanish
- Extensive multi-media technical resources to help you
- We investigate all quality concerns to ensure our products perform to the highest standards

If the product does not perform as described on this datasheet, we will offer a refund or replacement. For full details of the Abpromise, please visit <https://www.abcam.cn/abpromise> or contact our technical team.

### **Terms and conditions**

---

- Guarantee only valid for products bought direct from Abcam or one of our authorized distributors