

Anti-NTAL antibody [NAP-07] ab3992

★★★★★ [1 Abreviews](#) [8 References](#) [4 图像](#)

概述

产品名称	Anti-NTAL 抗体[NAP-07]
描述	小鼠单克隆抗体[NAP-07] to NTAL
宿主	Mouse
特异性	The antibody reacts with Non-T cell activation linker (NTAL) a 30 kDa transmembrane adaptor protein present in membrane microdomains (rafts) of B cells, NK cells and myeloid cells.
经测试应用	适用于: Flow Cyt (Intra), ICC/IF
种属反应性	与反应: Human
免疫原	Recombinant fragment, corresponding to amino acids 91-244 of Human NTAL.
阳性对照	RAMOS human lymphoma cell lysate, Raji human lymphoma cell lysate
常规说明	<p>The Life Science industry has been in the grips of a reproducibility crisis for a number of years. Abcam is leading the way in addressing this with our range of recombinant monoclonal antibodies and knockout edited cell lines for gold-standard validation. Please check that this product meets your needs before purchasing.</p> <p>If you have any questions, special requirements or concerns, please send us an inquiry and/or contact our Support team ahead of purchase. Recommended alternatives for this product can be found below, along with publications, customer reviews and Q&As</p>

性能

形式	Liquid
存放说明	Shipped at 4°C. Store at +4°C short term (1-2 weeks). Upon delivery aliquot. Store at -20°C or -80°C. Avoid freeze / thaw cycle.
存储溶液	pH: 7.40 Preservative: 0.097% Sodium azide Constituent: PBS
纯度	Protein A purified
纯化说明	Purified from hybridoma culture supernatant. Purity >95% by SDS-PAGE.
克隆	单克隆
克隆编号	NAP-07
同种型	IgG1

应用

The Abpromise guarantee **Abpromise™**承诺保证使用ab3992于以下的经测试应用

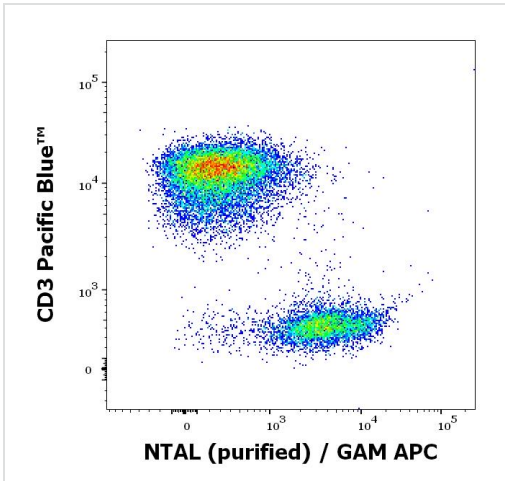
“应用说明”部分 下显示的仅为推荐的起始稀释度;实际最佳的稀释度/浓度应由使用者检定。

应用	Ab评论	说明
Flow Cyt (Intra)		Use a concentration of 1 - 4 µg/ml.
ICC/IF		Use at an assay dependent concentration.

靶标

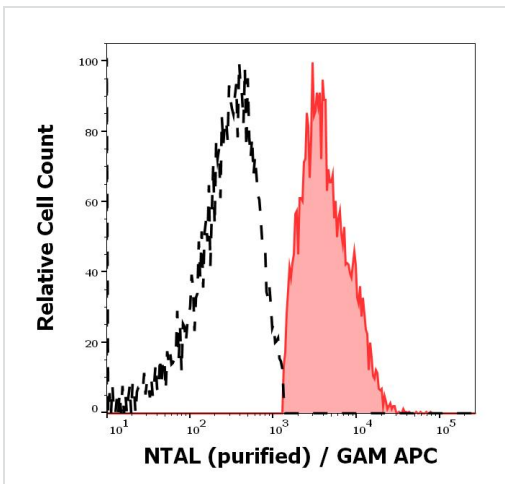
功能	Involved in FCER1 (high affinity immunoglobulin epsilon receptor)-mediated signaling in mast cells. May also be involved in BCR (B-cell antigen receptor)-mediated signaling in B-cells and FCGR1 (high affinity immunoglobulin gamma Fc receptor I)-mediated signaling in myeloid cells. Couples activation of these receptors and their associated kinases with distal intracellular events through the recruitment of GRB2.
组织特异性	Highly expressed in spleen, peripheral blood lymphocytes, and germinal centers of lymph nodes. Also expressed in placenta, lung, pancreas and small intestine. Present in B-cells, NK cells and monocytes. Absent from T-cells (at protein level).
疾病相关	Note=LAT2 is located in the Williams-Beuren syndrome (WBS) critical region. WBS results from a hemizygous deletion of several genes on chromosome 7q11.23, thought to arise as a consequence of unequal crossing over between highly homologous low-copy repeat sequences flanking the deleted region. Haploinsufficiency of LAT2 may be the cause of certain cardiovascular and musculo-skeletal abnormalities observed in the disease.
翻译后修饰	Phosphorylated on tyrosines following cross-linking of BCR in B-cells, FCGR1 in myeloid cells, or FCER1 in mast cells; which induces the recruitment of GRB2. May be polyubiquitinated.
细胞定位	Cell membrane. Present in lipid rafts.

图片



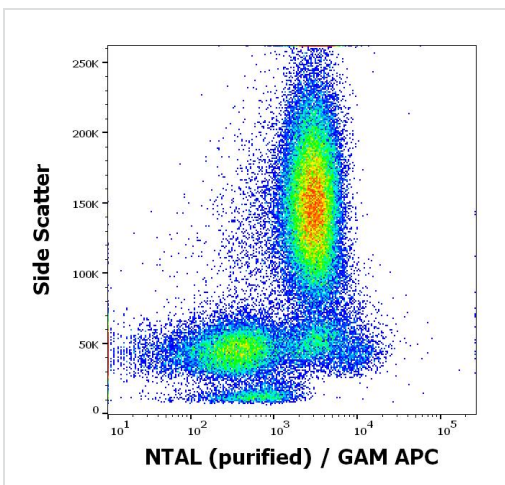
Flow Cytometry (Intracellular) - Anti-NTAL antibody
[NAP-07] (ab3992)

Flow cytometry multicolor intracellular staining of human peripheral whole blood stained using ab3992 (concentration in sample 9 $\mu\text{g/ml}$, GAM APC) and anti-human CD3 (UCHT1) Pacific Blue™ antibody (20 μl reagent / 100 μl of peripheral whole blood).



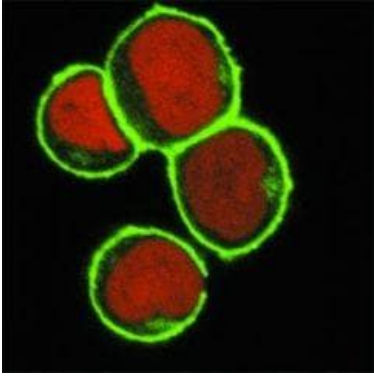
Flow Cytometry (Intracellular) - Anti-NTAL antibody
[NAP-07] (ab3992)

Separation of human CD3 negative NTAL positive lymphocytes (red-filled) from CD3 positive NTAL negative lymphocytes (black-dashed) in flow cytometry analysis (intracellular staining) of peripheral whole blood stained using ab3992 (concentration in sample 9 $\mu\text{g/ml}$, GAM APC).



Flow Cytometry (Intracellular) - Anti-NTAL antibody
[NAP-07] (ab3992)

Flow cytometry intracellular staining pattern of human peripheral whole blood using ab3992 (concentration in sample 9 $\mu\text{g/ml}$, GAM APC).



Subcellular localization of NTAL by confocal microscopy in the myeloid cell line THP-1. THP-1 cells were permeabilized and immunostained using antibody NAP-07 (green). Nuclei are visualized by propidium iodide (red).

Immunocytochemistry/ Immunofluorescence - Anti-NTAL antibody [NAP-07] (ab3992)

Please note: All products are "FOR RESEARCH USE ONLY. NOT FOR USE IN DIAGNOSTIC PROCEDURES"

Our Abpromise to you: Quality guaranteed and expert technical support

- Replacement or refund for products not performing as stated on the datasheet
- Valid for 12 months from date of delivery
- Response to your inquiry within 24 hours
- We provide support in Chinese, English, French, German, Japanese and Spanish
- Extensive multi-media technical resources to help you
- We investigate all quality concerns to ensure our products perform to the highest standards

If the product does not perform as described on this datasheet, we will offer a refund or replacement. For full details of the Abpromise, please visit <https://www.abcam.cn/abpromise> or contact our technical team.

Terms and conditions

- Guarantee only valid for products bought direct from Abcam or one of our authorized distributors