


### Anti-NSFL1C antibody ab95963

★★★★★ [1 Abreviews](#) [3 References](#) [2 图像](#)

#### 概述

产品名称	Anti-NSFL1C抗体
描述	兔多克隆抗体to NSFL1C
宿主	Rabbit
经测试应用	适用于: WB, IHC-P
种属反应性	与反应: Human 预测可用于: Mouse, Rat, Cow 
免疫原	Recombinant protein fragment with a sequence corresponding to a region within amino acids 21 and 272 of Human NSFL1C (NP_057227).
阳性对照	A431 whole cell lysate ( <a href="#">ab7909</a> ) can be used as a positive control in WB.
常规说明	<p>The Life Science industry has been in the grips of a reproducibility crisis for a number of years. Abcam is leading the way in addressing this with our range of recombinant monoclonal antibodies and knockout edited cell lines for gold-standard validation. Please check that this product meets your needs before purchasing.</p> <p>If you have any questions, special requirements or concerns, please send us an inquiry and/or contact our Support team ahead of purchase. Recommended alternatives for this product can be found below, along with publications, customer reviews and Q&amp;As</p>

#### 性能

形式	Liquid
存放说明	Shipped at 4°C. Upon delivery aliquot and store at -20°C. Avoid freeze / thaw cycles.
存储溶液	pH: 7.00 Preservative: 0.01% Thimerosal (merthiolate) Constituents: 1.21% Tris, 0.75% Glycine, 10% Glycerol (glycerin, glycerine)
纯度	Immunogen affinity purified
克隆	多克隆
同种型	IgG

#### 应用

## The Abpromise guarantee

**Abpromise™** 承诺保证使用 ab95963 于以下的经测试应用

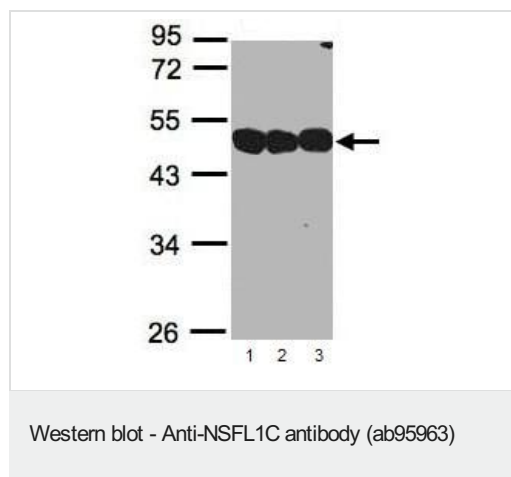
“应用说明”部分 下显示的仅为推荐的起始稀释度;实际最佳的稀释度/浓度应由使用者检定。

应用	Ab 评论	说明
WB	★★★★★ (1)	1/500 - 1/3000. Predicted molecular weight: 41 kDa.
IHC-P		1/100 - 1/250.

## 靶标

功能	Reduces the ATPase activity of VCP. Necessary for the fragmentation of Golgi stacks during mitosis and for VCP-mediated reassembly of Golgi stacks after mitosis. May play a role in VCP-mediated formation of transitional endoplasmic reticulum (tER) (By similarity). Inhibits the activity of CTSL (in vitro).
序列相似性	Belongs to the NSFL1C family. Contains 1 SEP domain. Contains 1 UBX domain.
翻译后修饰	Phosphorylated during mitosis. Phosphorylation inhibits interaction with Golgi membranes and is required for the fragmentation of the Golgi stacks during mitosis.
细胞定位	Nucleus. Golgi apparatus > Golgi stack. Chromosome. Predominantly nuclear in interphase cells. Bound to the axial elements of sex chromosomes in pachytene spermatocytes. A small proportion of the protein is cytoplasmic, associated with Golgi stacks.

## 图片



**All lanes :** Anti-NSFL1C antibody (ab95963) at 1/1000 dilution

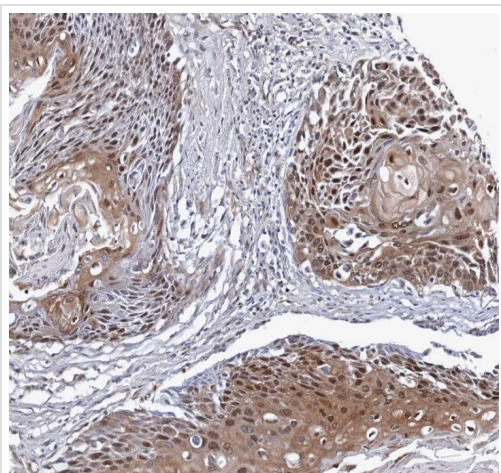
**Lane 1 :** 293T whole cell lysate

**Lane 2 :** A431 whole cell lysate

**Lane 3 :** H1299 whole cell lysate

Lysates/proteins at 30 µg per lane.

**Predicted band size:** 41 kDa



Immunohistochemistry (Formalin/PFA-fixed paraffin-embedded sections) - Anti-NSFL1C antibody (ab95963)

ab95963, at 1/100, staining paraffin-embedded differential N/T pair Lung SCC cancer by Immunohistochemistry.

**Please note:** All products are "FOR RESEARCH USE ONLY. NOT FOR USE IN DIAGNOSTIC PROCEDURES"

### Our Abpromise to you: Quality guaranteed and expert technical support

---

- Replacement or refund for products not performing as stated on the datasheet
- Valid for 12 months from date of delivery
- Response to your inquiry within 24 hours
- We provide support in Chinese, English, French, German, Japanese and Spanish
- Extensive multi-media technical resources to help you
- We investigate all quality concerns to ensure our products perform to the highest standards

If the product does not perform as described on this datasheet, we will offer a refund or replacement. For full details of the Abpromise, please visit <https://www.abcam.cn/abpromise> or contact our technical team.

### Terms and conditions

---

- Guarantee only valid for products bought direct from Abcam or one of our authorized distributors