


# Anti-NSE antibody ab227301

## 4 图像

### 概述

---

产品名称	Anti-NSE抗体
描述	兔多克隆抗体to NSE
宿主	Rabbit
经测试应用	适用于: WB, IHC-Fr, ICC/IF
种属反应性	与反应: Mouse, Rat, Human 预测可用于: Chicken, Cow, Rhesus monkey 
免疫原	Recombinant fragment within Human NSE (internal sequence). The exact sequence is proprietary. Database link: <a href="#">P09104</a>
阳性对照	ICC/IF: A431 cells. IHC-Fr: E13.5 rat brain tissue. WB: Mouse brain lysate; HEK-293T and A431 whole cell lysates.
常规说明	<p>The Life Science industry has been in the grips of a reproducibility crisis for a number of years. Abcam is leading the way in addressing this with our range of recombinant monoclonal antibodies and knockout edited cell lines for gold-standard validation. Please check that this product meets your needs before purchasing.</p> <p>If you have any questions, special requirements or concerns, please send us an inquiry and/or contact our Support team ahead of purchase. Recommended alternatives for this product can be found below, along with publications, customer reviews and Q&amp;As</p>

### 性能

---

形式	Liquid
存放说明	Shipped at 4°C. Store at +4°C short term (1-2 weeks). Upon delivery aliquot. Store at -20°C long term. Avoid freeze / thaw cycle.
存储溶液	pH: 7.00 Preservative: 0.01% Thimerosal (merthiolate) Constituents: 1.21% Tris, 0.75% Glycine, 10% Glycerol (glycerin, glycerine)
纯度	Immunogen affinity purified
克隆	多克隆
同种型	IgG

## 应用

### The Abpromise guarantee

**Abpromise™** 承诺保证使用 ab227301 于以下的经测试应用

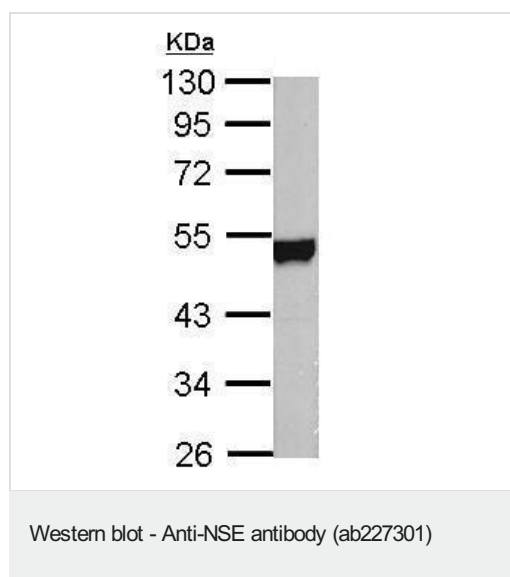
“应用说明”部分 下显示的仅为推荐的起始稀释度;实际最佳的稀释度/浓度应由使用者检定。

应用	Ab评论	说明
WB		1/1000 - 1/10000. Predicted molecular weight: 47 kDa.
IHC-Fr		1/100 - 1/1000.
ICC/IF		1/100 - 1/1000.

## 靶标

功能	Has neurotrophic and neuroprotective properties on a broad spectrum of central nervous system (CNS) neurons. Binds, in a calcium-dependent manner, to cultured neocortical neurons and promotes cell survival.
组织特异性	The alpha/alpha homodimer is expressed in embryo and in most adult tissues. The alpha/beta heterodimer and the beta/beta homodimer are found in striated muscle, and the alpha/gamma heterodimer and the gamma/gamma homodimer in neurons.
通路	Carbohydrate degradation; glycolysis; pyruvate from D-glyceraldehyde 3-phosphate: step 4/5.
序列相似性	Belongs to the enolase family.
发展阶段	During ontogenesis, there is a transition from the alpha/alpha homodimer to the alpha/beta heterodimer in striated muscle cells, and to the alpha/gamma heterodimer in nerve cells.
细胞定位	Cytoplasm. Cell membrane. Can translocate to the plasma membrane in either the homodimeric (alpha/alpha) or heterodimeric (alpha/gamma) form.

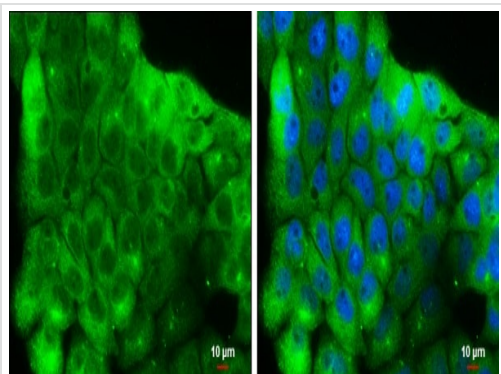
## 图片



Anti-NSE antibody (ab227301) at 1/10000 dilution + Mouse brain lysate at 50 µg

**Predicted band size: 47 kDa**

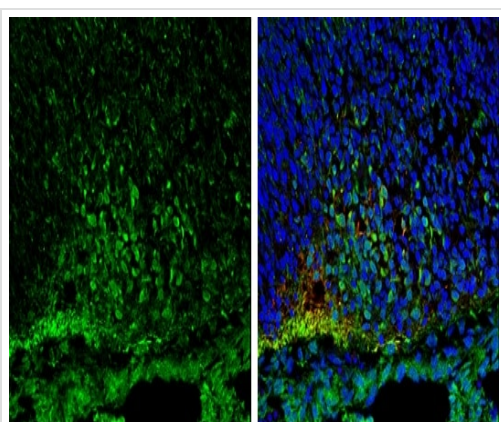
10% SDS-PAGE gel.



Immunocytochemistry/ Immunofluorescence - Anti-NSE antibody (ab227301)

A431 (human epidermoid carcinoma cell line) cells stained for NSE (green) using ab227301 at 1/500 dilution in ICC/IF. Cells were fixed in 4% paraformaldehyde at RT for 15 minutes.

Blue: Hoechst 33342 staining.

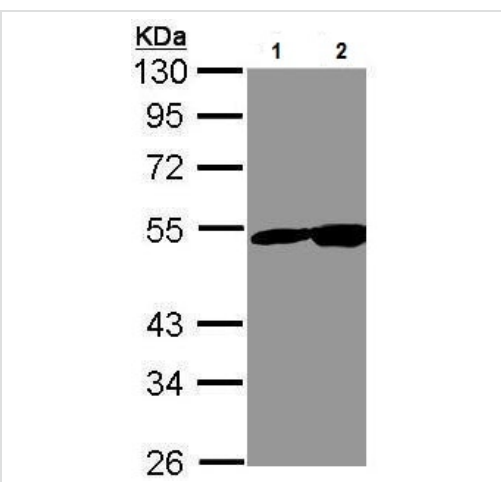


Immunohistochemistry (Frozen sections) - Anti-NSE antibody (ab227301)

Frozen sectioned E13.5 rat brain tissue stained for NSE using ab227301 at 1/250 dilution in immunohistochemical analysis.

Red: beta Tubulin 3, a mature neuron marker.

Blue: DAPI.



Western blot - Anti-NSE antibody (ab227301)

**All lanes** : Anti-NSE antibody (ab227301) at 1/1000 dilution

**Lane 1** : HEK-293T (human epithelial cell line from embryonic kidney transformed with large T antigen) whole cell lysate

**Lane 2** : A431 (human epidermoid carcinoma cell line) whole cell lysate

Lysates/proteins at 30 µg per lane.

**Predicted band size:** 47 kDa

10% SDS-PAGE gel.

## **Our Abpromise to you: Quality guaranteed and expert technical support**

---

- Replacement or refund for products not performing as stated on the datasheet
- Valid for 12 months from date of delivery
- Response to your inquiry within 24 hours
  
- We provide support in Chinese, English, French, German, Japanese and Spanish
- Extensive multi-media technical resources to help you
- We investigate all quality concerns to ensure our products perform to the highest standards

If the product does not perform as described on this datasheet, we will offer a refund or replacement. For full details of the Abpromise, please visit <https://www.abcam.cn/abpromise> or contact our technical team.

## **Terms and conditions**

---

- Guarantee only valid for products bought direct from Abcam or one of our authorized distributors