


Anti-NRXN2 antibody ab34245

★★★★★ [1 Abreviews](#) [4 References](#) [1 图像](#)

概述

产品名称	Anti-NRXN2抗体
描述	兔多克隆抗体to NRXN2
宿主	Rabbit
经测试应用	适用于: WB, IHC-P, ICC/IF
种属反应性	与反应: Rat, Human 预测可用于: Mouse 
免疫原	Synthetic peptide corresponding to Rat NRXN2 aa 250-350 conjugated to keyhole limpet haemocyanin. (Peptide available as ab34449 , ab34450)
阳性对照	normal adult human cerebral cortex SKNSH cell line
常规说明	<p>The Life Science industry has been in the grips of a reproducibility crisis for a number of years. Abcam is leading the way in addressing this with our range of recombinant monoclonal antibodies and knockout edited cell lines for gold-standard validation. Please check that this product meets your needs before purchasing.</p> <p>If you have any questions, special requirements or concerns, please send us an inquiry and/or contact our Support team ahead of purchase. Recommended alternatives for this product can be found below, along with publications, customer reviews and Q&As</p>

性能

形式	Liquid
存放说明	Shipped at 4°C. Store at +4°C short term (1-2 weeks). Upon delivery aliquot. Store at -20°C or -80°C. Avoid freeze / thaw cycle.
存储溶液	pH: 7.40 Preservative: 0.02% Sodium azide Constituent: PBS
纯度	Batches of this product that have a concentration < 1mg/ml may have BSA added as a stabilising agent. If you would like information about the formulation of a specific lot, please contact our scientific support team who will be happy to help. Immunogen affinity purified

克隆 多克隆
同种型 IgG

应用

The Abpromise guarantee **Abpromise™**承诺保证使用ab34245于以下的经测试应用

“应用说明”部分 下显示的仅为推荐的起始稀释度;实际最佳的稀释度/浓度应由使用者检定。

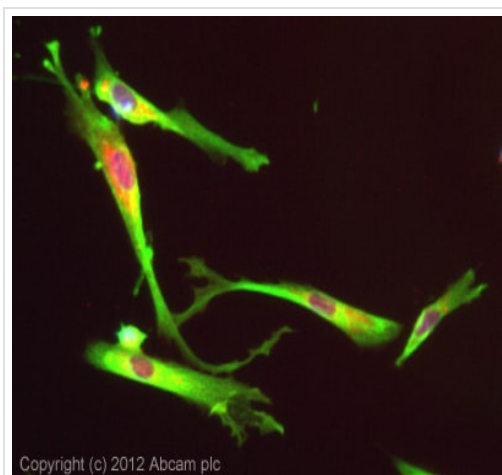
应用	Ab评论	说明
WB	★★★★★ (1)	Use at an assay dependent concentration.
IHC-P		Use at an assay dependent concentration.
ICC/IF		Use a concentration of 5 µg/ml.

靶标

相关性 Neurexin 2 alpha belongs to the Neurexin family, a group of neuronal proteins that function as cell adhesion molecules during synaptogenesis and intracellular signaling. Mammalian genomes contain just three neurexin genes. However, many (>200) neurexin isoforms may be expressed through the use of two alternative promoters and alternative splicing at up to five different positions.

细胞定位 Membrane; single-pass type I membrane protein.

图片



Copyright (c) 2012 Abcam plc

Immunocytochemistry/ Immunofluorescence - Anti-NRXN2 antibody (ab34245)

ICC/IF image of ab34245 stained SKNSH cells. The cells were 4% formaldehyde fixed (10 min) and then incubated in 1%BSA / 10% normal goat serum / 0.3M glycine in 0.1% PBS-Tween for 1h to permeabilise the cells and block non-specific protein-protein interactions. The cells were then incubated with the antibody (ab34245, 1µg/ml) overnight at +4°C. The secondary antibody (green) was **ab96899**, DyLight® 488 goat anti-rabbit IgG (H+L) used at a 1/250 dilution for 1h. Alexa Fluor® 594 WGA was used to label plasma membranes (red) at a 1/200 dilution for 1h. DAPI was used to stain the cell nuclei (blue) at a concentration of 1.43µM.

Please note: All products are "FOR RESEARCH USE ONLY. NOT FOR USE IN DIAGNOSTIC PROCEDURES"

Our Abpromise to you: Quality guaranteed and expert technical support

- Replacement or refund for products not performing as stated on the datasheet
- Valid for 12 months from date of delivery
- Response to your inquiry within 24 hours

- We provide support in Chinese, English, French, German, Japanese and Spanish
- Extensive multi-media technical resources to help you
- We investigate all quality concerns to ensure our products perform to the highest standards

If the product does not perform as described on this datasheet, we will offer a refund or replacement. For full details of the Abpromise, please visit <https://www.abcam.cn/abpromise> or contact our technical team.

Terms and conditions

- Guarantee only valid for products bought direct from Abcam or one of our authorized distributors