


Anti-NR2E1/Tailless/TLX antibody [EPR4491] ab109179

重组 RabMAb

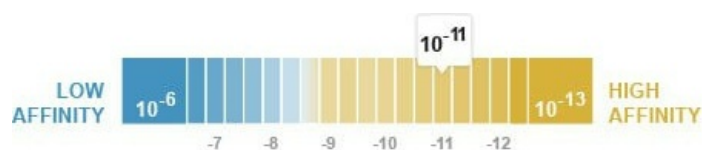
2 References [3 图像](#)

概述

产品名称	Anti-NR2E1/Tailless/TLX抗体[EPR4491]
描述	兔单克隆抗体[EPR4491] to NR2E1/Tailless/TLX
宿主	Rabbit
经测试应用	适用于: WB 不适用于: Flow Cyt, ICC/IF, IHC-P or IP
种属反应性	与反应: Human 预测可用于: Mouse, Rat 
免疫原	Synthetic peptide. This information is proprietary to Abcam and/or its suppliers.
阳性对照	Fetal brain, Human hippocampus, SH-SY5Y and Jurkat lysates
常规说明	This product is a recombinant monoclonal antibody, which offers several advantages including: <ul style="list-style-type: none"> - High batch-to-batch consistency and reproducibility - Improved sensitivity and specificity - Long-term security of supply - Animal-free production For more information see here . Our RabMAb [®] technology is a patented hybridoma-based technology for making rabbit monoclonal antibodies. For details on our patents, please refer to RabMAb[®] patents .

性能

形式	Liquid
存放说明	Shipped at 4°C. Store at -20°C. Stable for 12 months at -20°C.
解离常数 (K_D)	K _D = 9.30 x 10 ⁻¹¹ M



[Learn more about K_D](#)

存储溶液 pH: 7.20

Preservative: 0.05% Sodium azide
Constituents: 0.1% BSA, 40% Glycerol (glycerin, glycerine), 9.85% Tris glycine, 50% Tissue culture supernatant

纯度 Protein A purified
克隆 单克隆
克隆编号 EPR4491
同种型 IgG

应用

The Abpromise guarantee **Abpromise™**承诺保证使用ab109179于以下的经测试应用

“应用说明”部分 下显示的仅为推荐的起始稀释度;实际最佳的稀释度/浓度应由使用者检定。

应用	Ab评论	说明
WB		1/1000 - 1/10000. Predicted molecular weight: 43 kDa.

应用说明 Is unsuitable for Flow Cyt, ICC/IF, IHC-P or IP.

靶标

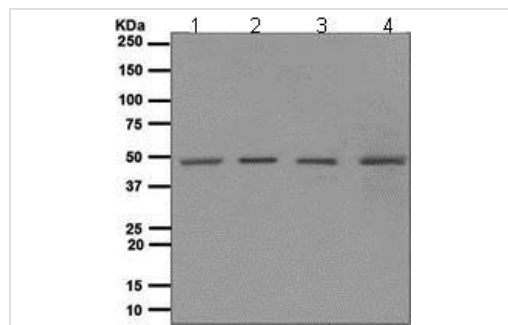
功能 Orphan receptor that binds DNA as a monomer to hormone response elements (HRE) containing an extended core motif half-site sequence 5'-AAGGTCA-3' in which the 5' flanking nucleotides participate in determining receptor specificity. May be required for brain development. May be involved in the regulation of retinal development.

组织特异性 Brain specific. Present in all brain sections tested, highest levels in the caudate nucleus and hippocampus, weakest levels in the thalamus.

序列相似性 Belongs to the nuclear hormone receptor family. NR2 subfamily.
Contains 1 nuclear receptor DNA-binding domain.

细胞定位 Nucleus.

图片



Western blot - Anti-NR2E1/Tailless/TLX antibody
[EPR4491] (ab109179)

All lanes : Anti-NR2E1/Tailless/TLX antibody [EPR4491]
(ab109179) at 1/1000 dilution

Lane 1 : Fetal brain lysate

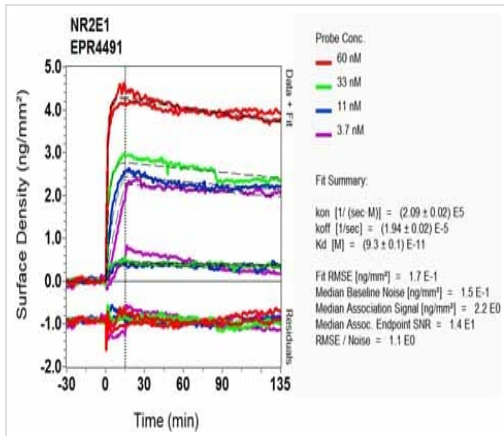
Lane 2 : Human hippocampus lysate

Lane 3 : SH-SY5Y lysate

Lane 4 : Jurkat lysate

Lysates/proteins at 10 µg per lane.

Predicted band size: 43 kDa



OI-RD Scanning - Anti-NR2E1/Tailless/TLX antibody
[EPR4491] (ab109179)

Equilibrium dissociation constant (K_D)

Learn more about K_D

[Click here to learn more about \$K_D\$](#)

Why choose a recombinant antibody?

Research with confidence
Consistent and reproducible results

Long-term and scalable supply
Recombinant technology

Success from the first experiment
Confirmed specificity

Ethical standards compliant
Animal-free production

Anti-NR2E1/Tailless/TLX antibody [EPR4491]
(ab109179)

Please note: All products are "FOR RESEARCH USE ONLY. NOT FOR USE IN DIAGNOSTIC PROCEDURES"

Our Abpromise to you: Quality guaranteed and expert technical support

- Replacement or refund for products not performing as stated on the datasheet
- Valid for 12 months from date of delivery
- Response to your inquiry within 24 hours
- We provide support in Chinese, English, French, German, Japanese and Spanish
- Extensive multi-media technical resources to help you
- We investigate all quality concerns to ensure our products perform to the highest standards

If the product does not perform as described on this datasheet, we will offer a refund or replacement. For full details of the Abpromise, please visit <https://www.abcam.cn/abpromise> or contact our technical team.

Terms and conditions

- Guarantee only valid for products bought direct from Abcam or one of our authorized distributors