




Anti-Notch2 antibody ab118824

9 References **1 图像**

概述

产品名称	Anti-Notch2抗体
描述	兔多克隆抗体to Notch2
宿主	Rabbit
经测试应用	适用于: ELISA, ICC/IF, WB, IHC-P
种属反应性	与反应: Human 预测可用于: Mouse, Rat 
免疫原	Synthetic peptide corresponding to Human Notch2 aa 2350-2450 conjugated to keyhole limpet haemocyanin (Cysteine residue). Synthetic peptide: NAAERTPSHSGHLQ conjugated to KLH with a Cysteine residue linker, corresponding to amino acids 2396-2409 of Human Notch2 (NP_077719.2).  Run BLAST with  Run BLAST with
阳性对照	Human kidney tissue.
常规说明	<p>The Life Science industry has been in the grips of a reproducibility crisis for a number of years. Abcam is leading the way in addressing this with our range of recombinant monoclonal antibodies and knockout edited cell lines for gold-standard validation. Please check that this product meets your needs before purchasing.</p> <p>If you have any questions, special requirements or concerns, please send us an inquiry and/or contact our Support team ahead of purchase. Recommended alternatives for this product can be found below, along with publications, customer reviews and Q&As</p>
<hr/>	
性能	
形式	Liquid
存放说明	Shipped at 4°C. Upon delivery aliquot and store at -20°C. Avoid repeated freeze / thaw cycles.
存储溶液	pH: 7.20 Preservative: 0.1% Sodium azide Constituents: 0.424% Potassium phosphate, 0.88% Sodium chloride
纯度	Whole antiserum
克隆	多克隆

应用

The Abpromise guarantee **Abpromise™**承诺保证使用ab118824于以下的经测试应用

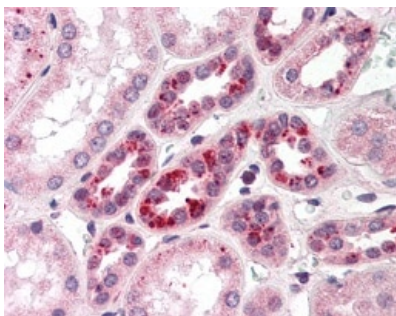
“应用说明”部分下显示的仅为推荐的起始稀释度;实际最佳的稀释度/浓度应由使用者检定。

应用	Ab评论	说明
ELISA		Use at an assay dependent concentration.
ICC/IF		Use at an assay dependent concentration.
WB		Use at an assay dependent concentration. Predicted molecular weight: 265 kDa.
IHC-P		1/500. Perform heat mediated antigen retrieval with citrate buffer pH 6 before commencing with IHC staining protocol.

靶标

功能	Functions as a receptor for membrane-bound ligands Jagged1, Jagged2 and Delta1 to regulate cell-fate determination. Upon ligand activation through the released notch intracellular domain (NICD) it forms a transcriptional activator complex with RBPJ/RBPSUH and activates genes of the enhancer of split locus. Affects the implementation of differentiation, proliferation and apoptotic programs (By similarity). Involved in bone remodeling and homeostasis. In collaboration with RELA/p65 enhances NFATc1 promoter activity and positively regulates RANKL-induced osteoclast differentiation. Positively regulates self-renewal of liver cancer cells (PubMed:25985737).
组织特异性	Expressed in the brain, heart, kidney, lung, skeletal muscle and liver. Ubiquitously expressed in the embryo.
疾病相关	Alagille syndrome 2 Hajdu-Cheney syndrome
序列相似性	Belongs to the NOTCH family. Contains 6 ANK repeats. Contains 35 EGF-like domains. Contains 3 LNR (Lin/Notch) repeats.
翻译后修饰	Synthesized in the endoplasmic reticulum as an inactive form which is proteolytically cleaved by a furin-like convertase in the trans-Golgi network before it reaches the plasma membrane to yield an active, ligand-accessible form. Cleavage results in a C-terminal fragment N(TM) and a N-terminal fragment N(EC). Following ligand binding, it is cleaved by TNF-alpha converting enzyme (TACE) to yield a membrane-associated intermediate fragment called notch extracellular truncation (NEXT). This fragment is then cleaved by presenilin dependent gamma-secretase to release a notch-derived peptide containing the intracellular domain (NICD) from the membrane. Hydroxylated by HIF1AN. Can be either O-glucosylated or O-xylosylated at Ser-613 by POGLUT1.
细胞定位	Cell membrane and Nucleus. Cytoplasm. Following proteolytical processing NICD is translocated to the nucleus. Retained at the cytoplasm by C8orf4 (PubMed:25985737).

图片



Immunohistochemistry (Formalin/PFA-fixed paraffin-embedded sections) - Anti-Notch2 antibody (ab118824)

ab118824, at a 1/500 dilution, staining Notch2 in formalin fixed, paraffin embedded Human kidney tissue followed by biotinylated secondary antibody, alkaline phosphatase-streptavidin and chromogen.

Please note: All products are "FOR RESEARCH USE ONLY. NOT FOR USE IN DIAGNOSTIC PROCEDURES"

Our Abpromise to you: Quality guaranteed and expert technical support

- Replacement or refund for products not performing as stated on the datasheet
- Valid for 12 months from date of delivery
- Response to your inquiry within 24 hours
- We provide support in Chinese, English, French, German, Japanese and Spanish
- Extensive multi-media technical resources to help you
- We investigate all quality concerns to ensure our products perform to the highest standards

If the product does not perform as described on this datasheet, we will offer a refund or replacement. For full details of the Abpromise, please visit <https://www.abcam.cn/abpromise> or contact our technical team.

Terms and conditions

- Guarantee only valid for products bought direct from Abcam or one of our authorized distributors