

Anti-Noradrenaline transporter antibody ab41559

[1 Abreviews](#) [4 References](#) [2 图像](#)

概述

产品名称	Anti-Noradrenaline transporter抗体
描述	兔多克隆抗体to Noradrenaline transporter
宿主	Rabbit
特异性	Ab41559 does not cross react with dopamine and serotonin transporters.
经测试应用	适用于: WB, ICC/IF
种属反应性	与反应: Rat, Human
免疫原	The noradrenaline transporter antibodies were generated against unique N-terminal peptides that are unique to the noradrenaline transporter protein. The antibodies are raised utilizing linear, multiple antigenic peptides or cyclic peptide methodology.
常规说明	<p>The Life Science industry has been in the grips of a reproducibility crisis for a number of years. Abcam is leading the way in addressing this with our range of recombinant monoclonal antibodies and knockout edited cell lines for gold-standard validation. Please check that this product meets your needs before purchasing.</p> <p>If you have any questions, special requirements or concerns, please send us an inquiry and/or contact our Support team ahead of purchase. Recommended alternatives for this product can be found below, along with publications, customer reviews and Q&As</p>

性能

形式	Liquid
存放说明	Shipped at 4°C. Upon delivery aliquot and store at -20°C or -80°C. Avoid repeated freeze / thaw cycles.
存储溶液	pH: 7.80 Preservative: 0.02% Sodium azide Constituents: 0.5% BSA, Tris glycine, 30% Glycerol
纯度	Immunogen affinity purified
克隆	多克隆
同种型	IgG

应用

The Abpromise guarantee

Abpromise™ 承诺保证使用 ab41559 于以下的经测试应用

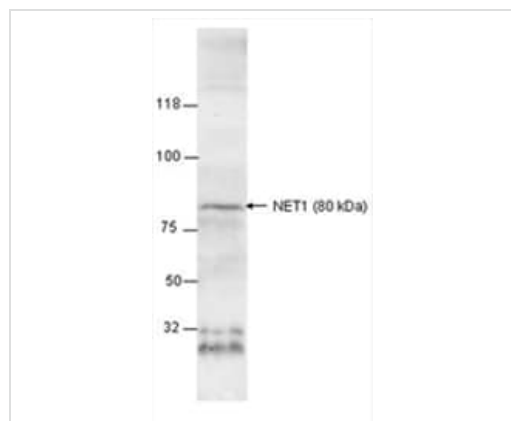
“应用说明”部分 下显示的仅为推荐的起始稀释度;实际最佳的稀释度/浓度应由使用者检定。

应用	Ab评论	说明
WB		1/500 - 1/1000. Detects a band of approximately 80 kDa (predicted molecular weight: 70 kDa).
ICC/IF		Use a concentration of 5 µg/ml.

靶标

功能	Amine transporter. Terminates the action of noradrenaline by its high affinity sodium-dependent reuptake into presynaptic terminals.
疾病相关	Orthostatic intolerance
序列相似性	Belongs to the sodium:neurotransmitter symporter (SNF) (TC 2.A.22) family. SLC6A2 subfamily.
细胞定位	Membrane.

图片



Western blot - Anti-Noradrenaline transporter antibody (ab41559)

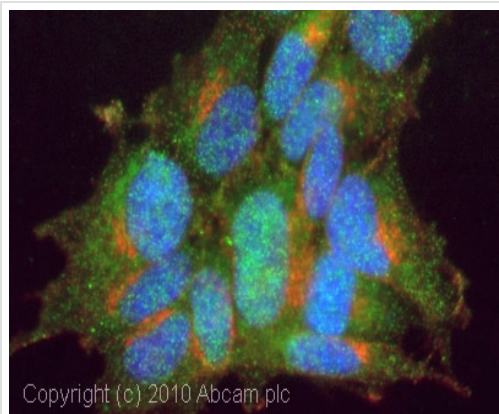
Anti-Noradrenaline transporter antibody (ab41559) at 1/250 dilution + rat brain cortical membrane cell lysate at 70 µg

Predicted band size: 70 kDa

Observed band size: 80 kDa

Additional bands at: 28 kDa, 32 kDa. We are unsure as to the identity of these extra bands.

Western Blot with rat brain cortical membranes



Immunocytochemistry/ Immunofluorescence - Anti-Noradrenaline transporter antibody (ab41559)

ICC/IF image of ab41559 stained SHSY5Y cells. The cells were 4% formaldehyde fixed (10 min) and then incubated in 1%BSA / 10% normal goat serum / 0.3M glycine in 0.1% PBS-Tween for 1h to permeabilise the cells and block non-specific protein-protein interactions. The cells were then incubated with the antibody (ab41559, 5µg/ml) overnight at +4°C. The secondary antibody (green) was Alexa Fluor® 488 goat anti-rabbit IgG (H+L) used at a 1/1000 dilution for 1h. Alexa Fluor® 594 WGA was used to label plasma membranes (red) at a 1/200 dilution for 1h. DAPI was used to stain the cell nuclei (blue) at a concentration of 1.43µM.

Please note: All products are "FOR RESEARCH USE ONLY. NOT FOR USE IN DIAGNOSTIC PROCEDURES"

Our Abpromise to you: Quality guaranteed and expert technical support

- Replacement or refund for products not performing as stated on the datasheet
- Valid for 12 months from date of delivery
- Response to your inquiry within 24 hours
- We provide support in Chinese, English, French, German, Japanese and Spanish
- Extensive multi-media technical resources to help you
- We investigate all quality concerns to ensure our products perform to the highest standards

If the product does not perform as described on this datasheet, we will offer a refund or replacement. For full details of the Abpromise, please visit <https://www.abcam.cn/abpromise> or contact our technical team.

Terms and conditions

- Guarantee only valid for products bought direct from Abcam or one of our authorized distributors