


Anti-NMDAR2B (phospho S1480) antibody ab73014

4 References **1 图像**

概述

产品名称	Anti-NMDAR2B (phospho S1480)抗体
描述	兔多克隆抗体to NMDAR2B (phospho S1480)
宿主	Rabbit
特异性	ab73014 is specific for ~180k NMDAR2B protein phosphorylated at Ser1480. Immunolabeling of the NMDAR2B band is blocked by the phosphopeptide used as the antigen but not by the corresponding dephosphopeptide. Immunolabeling is also blocked by lambda-phosphatase treatment.
经测试应用	适用于: WB
种属反应性	与反应: Rat 预测可用于: Mouse, Chicken, Cow, Dog, Human, Non human primates, Zebrafish 
免疫原	Synthetic peptide corresponding to Rat NMDAR2B (phospho S1480).
阳性对照	Rat hippocampal lysate.
常规说明	<p>The Life Science industry has been in the grips of a reproducibility crisis for a number of years. Abcam is leading the way in addressing this with our range of recombinant monoclonal antibodies and knockout edited cell lines for gold-standard validation. Please check that this product meets your needs before purchasing.</p> <p>If you have any questions, special requirements or concerns, please send us an inquiry and/or contact our Support team ahead of purchase. Recommended alternatives for this product can be found below, along with publications, customer reviews and Q&As</p>

性能

形式	Liquid
存放说明	Shipped at 4°C. Upon delivery aliquot and store at -20°C. Avoid freeze / thaw cycles.
存储溶液	pH: 7.50 Constituents: 0.01% BSA, 50% Glycerol, 0.87% Sodium chloride, 0.238% HEPES
纯度	Immunogen affinity purified
纯化说明	ab73014 is prepared from rabbit serum by affinity purification via sequential chromatography on phospho- and dephosphopeptide affinity columns.
克隆	多克隆

同种型 IgG

应用

The Abpromise guarantee **Abpromise™**承诺保证使用ab73014于以下的经测试应用

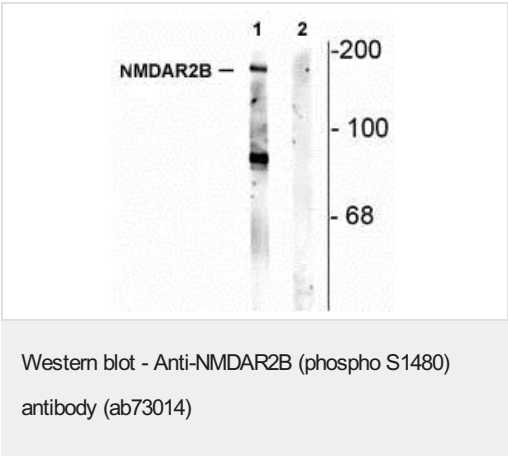
“应用说明”部分 下显示的仅为推荐的起始稀释度;实际最佳的稀释度/浓度应由使用者检定。

应用	Ab评论	说明
WB		1/1000. Detects a band of approximately 180 kDa (predicted molecular weight: 166 kDa).

靶标

功能	NMDA receptor subtype of glutamate-gated ion channels with high calcium permeability and voltage-dependent sensitivity to magnesium. Mediated by glycine.
组织特异性	Primarily found in the fronto-parieto-temporal cortex and hippocampus pyramidal cells, lower expression in the basal ganglia.
序列相似性	Belongs to the glutamate-gated ion channel (TC 1.A.10.1) family. NR2B/GRIN2B subfamily.
细胞定位	Cell membrane. Cell junction > synapse > postsynaptic cell membrane.

图片



All lanes : Anti-NMDAR2B (phospho S1480) antibody (ab73014) at 1/1000 dilution

Lane 1 : Rat hippocampal lysate

Lane 2 : Rat hippocampal lysate incubated in lambda-phosphatase (1200 units for 30 min)

Predicted band size: 166 kDa

Observed band size: 180 kDa

Additional bands at: 85 kDa. We are unsure as to the identity of these extra bands.

The phosphospecificity of the labeling is shown in the second lane (lambda-phosphatase). The immunolabeling is completely eliminated by treatment with lambda-phosphatase.

Please note: All products are "FOR RESEARCH USE ONLY. NOT FOR USE IN DIAGNOSTIC PROCEDURES"

Our Abpromise to you: Quality guaranteed and expert technical support

- Replacement or refund for products not performing as stated on the datasheet
- Valid for 12 months from date of delivery
- Response to your inquiry within 24 hours

- We provide support in Chinese, English, French, German, Japanese and Spanish
- Extensive multi-media technical resources to help you
- We investigate all quality concerns to ensure our products perform to the highest standards

If the product does not perform as described on this datasheet, we will offer a refund or replacement. For full details of the Abpromise, please visit <https://www.abcam.cn/abpromise> or contact our technical team.

Terms and conditions

- Guarantee only valid for products bought direct from Abcam or one of our authorized distributors